



Asking Price £375,000 | Apartment | Leasehold

- Two bedroom apartment
- Good size modern kitchen opening to a balcony
- residents parking
- Near Twickenham Green
- ideal investment of first time buy
- well presented throughout
- Family bathroom
- Communal grounds
- Close to local shops
- No onward chain

020 8892 1313



Sontan Court, Twickenham, TW2 5BU

Milestone and Collis is pleased to offer this charming two-bedroom apartment which is a true gem waiting to be discovered. Situated in a popular cul de sac, this property boasts a modern and immaculate interior that is sure to impress.

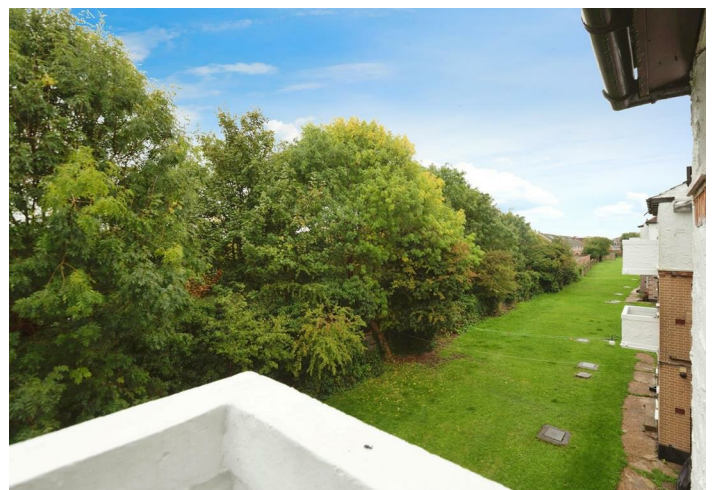
As you step inside, you are greeted by a bright and airy living space, perfect for relaxing or entertaining guests. The neutral palette throughout the apartment creates a sense of calm and sophistication, making it easy for you to add your personal touch.

With one bathroom and plenty of storage space, this apartment offers both convenience and practicality, communal grounds and gardens.

Located just a stone's throw away from Twickenham Green, this property offers easy access to the heart of the town. With residents parking available, you can say goodbye to the hassle of searching for a spot after a long day.

Close to local shops, cafes, pubs, and restaurants, you'll never run out of options for dining and entertainment. And the best part? This apartment comes with no onward chain, making the buying process smooth and stress-free.

Don't miss out on this fantastic opportunity to own a piece of Twickenham paradise. Book a viewing today and make this apartment your new home sweet home.



Milestone and Collis Sales 86 Heath Rd, Strawberry Hill, Twickenham TW1 4BW Turn right onto Heath Rd/A305/A311, 0.3 mi Continue straight onto The Grn/A305 Continue to follow A305, 0.5 mi Turn right onto Churchview Rd, 472 ft Churchview Rd Twickenham

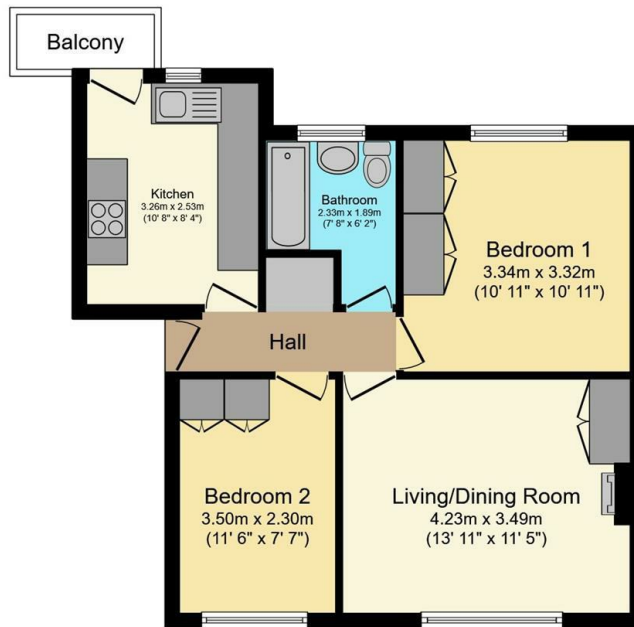
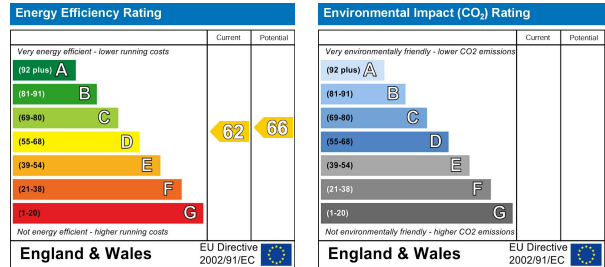


TW2 5BU lies on Churchview Road in Twickenham. TW2 5BU is located in the West Twickenham electoral ward, within the London borough of Richmond upon Thames and the English Parliamentary constituency of Twickenham. The Sub Integrated Care Board (ICB) Location is NHS South West London ICB - 36L and the police force is Metropolitan Police.

NEAREST SCHOOLS

- Trafalgar Infant School, State School, Ofsted: Good, 0.2 miles
- Trafalgar Junior School, State School, Ofsted: Good, 0.2 miles
- Waldegrave School, State School, Ofsted: Outstanding, 0.4 miles
- The Mall School, Independent School, 0.5 miles

Council tax band C



Total floor area 51.5 sq.m. (555 sq.ft.) approx
 This floor plan is for illustrative purposes only. It is not drawn to scale. Any measurements, floor areas (including any total floor area), openings and orientation are approximate. No details are guaranteed, they cannot be relied upon for any purpose and they do not form part of any agreement. No liability is taken for any error, omission or misstatement. A party must rely upon its own inspection(s).
 Powered by www.focalagent.com

It is our aim to provide particulars that are both accurate and reliable but they are not guaranteed and would not form part of any offer or contract. Please contact us if you require clarification and we would be happy to assist. Please also note that the appliances and heating system have not been tested and therefore, no warranties can be given as to their condition.