



Asking Price £750,000 | Apartment | Leasehold - Share of Freehold

- Luxury Two Bedroom Apartment
- Master Bedroom With En-Suite
- Lift To All Floors
- Communal Gardens
- 0.1 Miles Away From Putney Station
- Located in The Heart of Putney
- Private Balcony
- Concierge Service
- 0.2 Miles From East Putney Underground Station
- Tenure: Share of Freehold

020 8892 1313



# Tileman House, Putney, London SW15 2DD

Milestone and Collis are proud to offer this high specification, two-bedroom, two-bathroom, apartment is located in this much sort after Tileman House development. The property features two large double bedrooms, one with en-suite, an additional family bathroom, open plan kitchen / living room with high-end appliances, ample storage, and utility room. The property also offers a balcony with access from the living area and both bedrooms. Tileman House benefits from a lift, concierge, communal gardens. The development is located just 0.1 miles away from Putney Station which offers easy access to Waterloo, as well as just 0.2 miles from East Putney underground station which offers the district line.

Council: Wandsworth London Borough Council

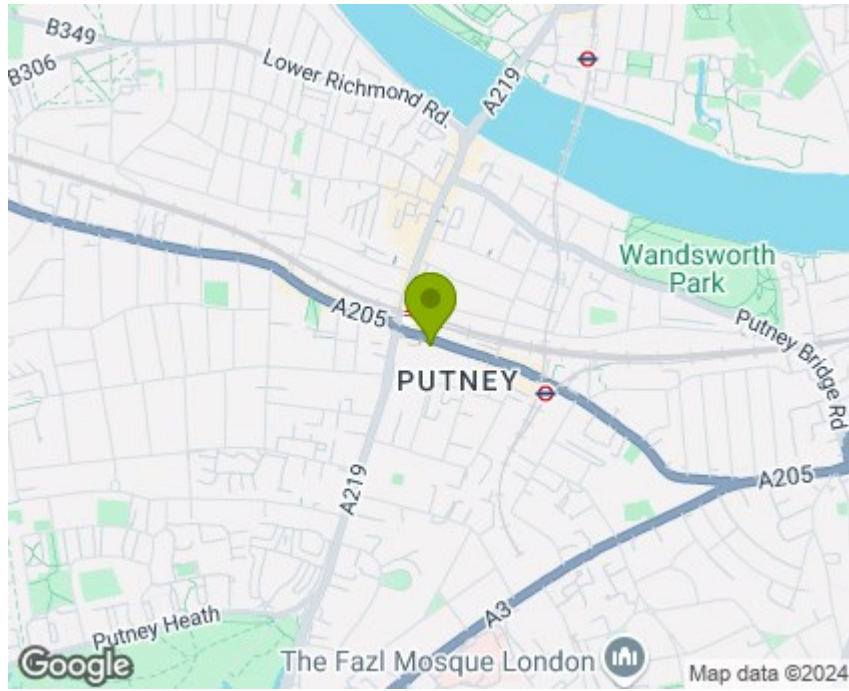
Council Tax Band: E

EPC Rating: B

Parking: N/A



Nearest underground/metro/tram to SW15 2DD East Putney Underground Station, East Putney - 355m Putney Bridge Underground Station, Putney Bridge - 1,018m Nearest railway stations to SW15 2DD Putney Station - 0.1km Wandsworth Town Station - 1.9km Barnes Station - 2km



SW15 2DD is located in the East Putney electoral ward, within the London borough of Wandsworth and the English Parliamentary constituency of Putney. The Sub Integrated Care Board (ICB) Location is NHS South West London ICB - 36L and the police force is Metropolitan Police.

**Near by Schools :**

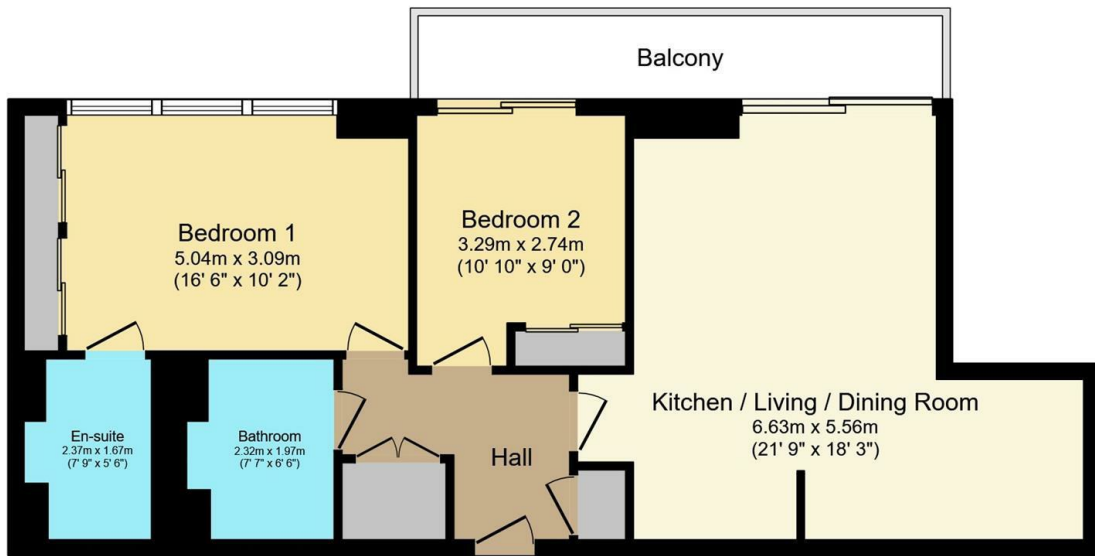
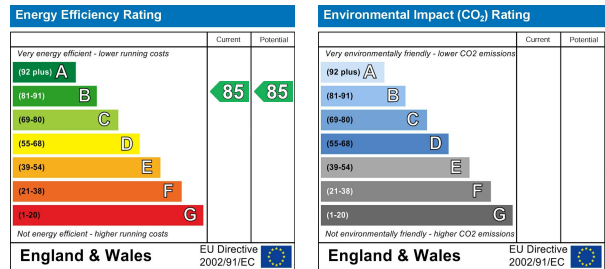
All Saints' CofE Primary School, Putney, State School, Ofsted: Good, 0.3 miles

Our Lady of Victories Catholic Primary School, State School, Ofsted: Good, 0.2 miles

Hotham Primary School, State School; Ofsted: Good, 0.2 miles

St Mary's CofE Primary School, State School, Ofsted: Good, 0.3 miles

Council tax band E



Total floor area 70.5 m<sup>2</sup> (759 sq.ft.) approx

This floor plan is for illustrative purposes only. It is not drawn to scale. Any measurements, floor areas (including any total floor area), openings and orientation are approximate. No details are guaranteed, they cannot be relied upon for any purpose and they do not form part of any agreement. No liability is taken for any error, omission or misstatement. A party must rely upon its own inspection(s). Powered by [www.focalagent.com](http://www.focalagent.com)

It is our aim to provide particulars that are both accurate and reliable but they are not guaranteed and would not form part of any offer or contract. Please contact us if you require clarification and we would be happy to assist. Please also note that the appliances and heating system have not been tested and therefore, no warranties can be given as to their condition.