



Asking Price £950,000 | House - Terraced | Freehold

- Five bedroom town house
- Modern living at its best
- Easy maintenance garden that overlooks open fields with gated side access
- Garage and own driveway
- In the catchment for some of the most popular schools in the area
- Two bathrooms and WC
- Sought after cul-de-sac
- Part of the Fortescue Park Residents Association
- Close to local shops and amenities
- Close to Twickenham Green, The River Thames, Strawberry Hill and Fulwell train stations

020 8892 1313



Shaftesbury Way, Twickenham, TW2 5RN

Milestone and Collis are pleased to offer this charming property in sought after Shaftesbury Way of Twickenham, this modern terraced house offers a delightful blend of comfort and convenience. Boasting 5 bedrooms, 2 bathrooms, and a downstairs WC, this property is perfect for a growing family or those who love to entertain guests.

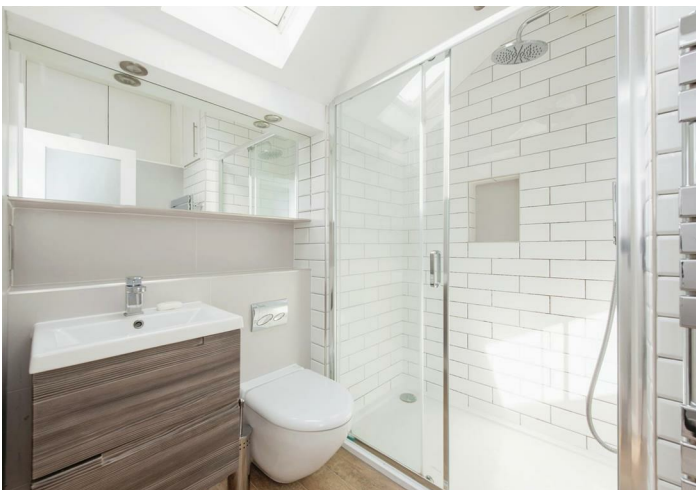
This townhouse exudes a timeless appeal while offering all the modern amenities one could desire. The property features a spacious reception room, ideal for relaxing or hosting gatherings. A large garage and own driveway provide ample parking space, a rare find in this sought-after area.

Being part of the Fortescue Park Residents Association adds a sense of community and security to the neighbourhood. This low maintenance garden with side gated access is a tranquil retreat, also set in one of the biggest plots that overlooks open fields, perfect for enjoying a cup of tea on a sunny afternoon.

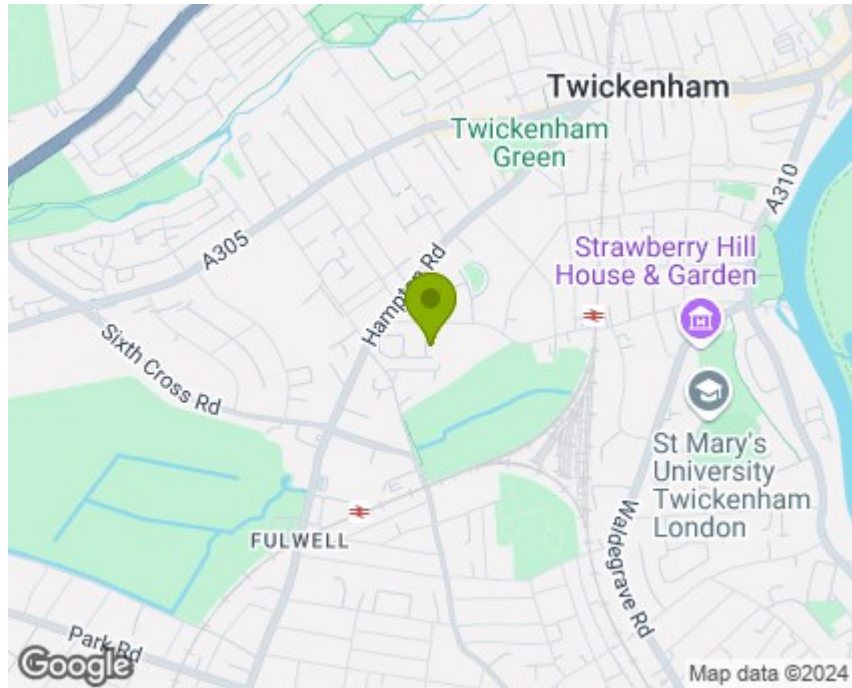
One of the many standout features of this property is its adaptability. Many residents in the area have reconfigured the upstairs layouts to create additional shower rooms, offices or larger bedrooms, showcasing the potential for personalisation and growth within the home.

Conveniently located within walking distance of both Strawberry Hill and Fulwell stations, this home offers easy access to transportation links, to central London and the south of England making commuting a breeze.

Whether you're looking for a peaceful sanctuary to call home or a space to host lively gatherings, this modern townhouse on Shaftesbury Way is sure to exceed your expectations.



Milestone and Collis Sales 86 Heath Rd, Strawberry Hill, Twickenham TW1 4BW Take Cross Deep/A310 to Tower Rd 3 min (0.7 mi) Continue on Tower Rd. Take Wellesley Rd to Shaftesbury Way 4 min (0.7 mi) Shaftesbury Way Twickenham

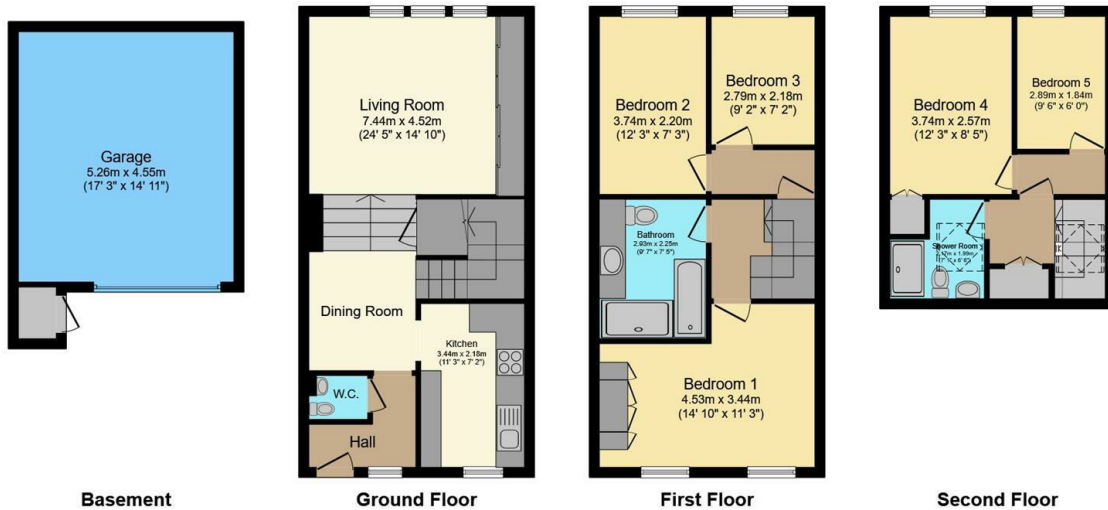
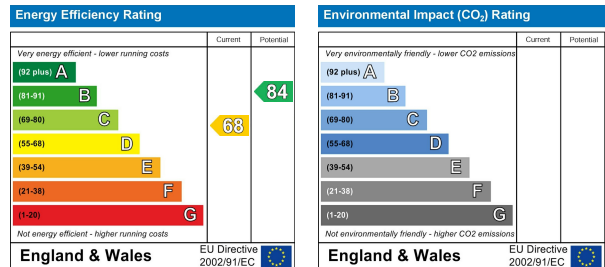


TW2 5RN lies on Shaftesbury Way in Twickenham. TW2 5RN is located in the South Twickenham electoral ward, within the London borough of Richmond upon Thames and the English Parliamentary constituency of Twickenham. The Sub Integrated Care Board (ICB) Location is NHS South West London ICB - 36L and the police force is Metropolitan Police.

NEAREST SCHOOLS

- St James's Roman Catholic Primary School, State School, Ofsted: Outstanding
0.1 miles
- The Mall School, Independent School
0.1 miles
- Trafalgar Infant School, State School, Ofsted: Good
0.3 miles
- Trafalgar Junior School, State School, Ofsted: Good
0.3 miles

Council tax band F



Total floor area 137.4 m² (1,479 sq.ft.) approx

This floor plan is for illustrative purposes only. It is not drawn to scale. Any measurements, floor areas (including any total floor area), openings and orientation are approximate. No details are guaranteed, they cannot be relied upon for any purpose and they do not form part of any agreement. No liability is taken for any error, omission or misstatement. A party must rely upon its own inspection(s). Powered by www.focalagent.com

It is our aim to provide particulars that are both accurate and reliable but they are not guaranteed and would not form part of any offer or contract. Please contact us if you require clarification and we would be happy to assist. Please also note that the appliances and heating system have not been tested and therefore, no warranties can be given as to their condition.