



Asking Price £500,000 | Apartment | Leasehold

- Very well presented three bedroom ground floor split level maisonette with private garden
- New bespoke kitchen
- Flexible layout
- Allocated parking
- Great transport links, road, rail and bus.
- Lounge and dining room with solid oak wooden floors
- New bathroom, new master en suite and cloakroom
- Popular cul de sac
- Integral garage and lots of storage
- Must see to avoid disappointment

020 8892 1313





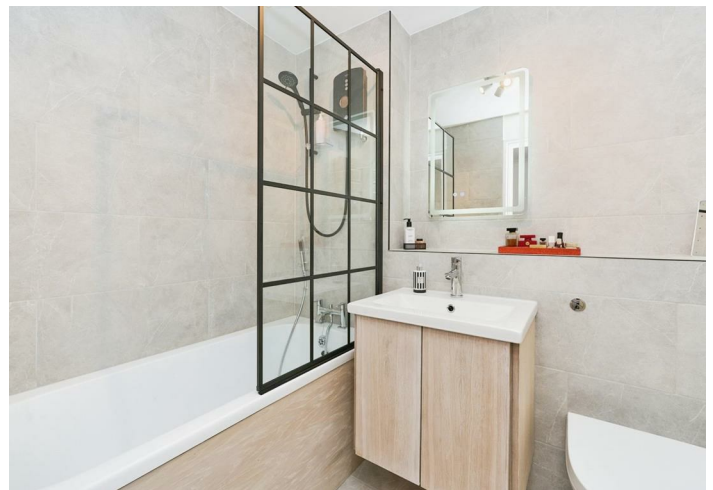


# Beaumont Place, Isleworth, TW7 7LB

Milestone and Collis are pleased to offer this very well presented Three bedroom ground floor split level maisonette with allocated parking, an integral garage, and a private garden.

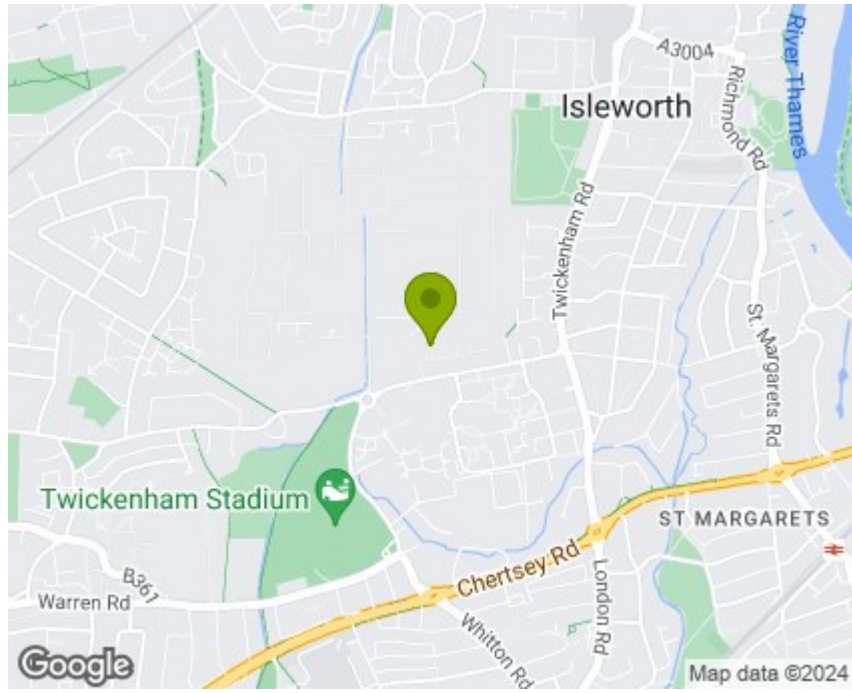
This is a must see, this bright and light property, has lots of potential with its flexible layout, it really does feel like being in a house, high end recent bespoke new kitchen, bathrooms, downstairs cloakroom and solid oak wooden floors in reception and dining areas. Well maintained standard throughout, and integral garage gives you lots of living space which is ideal for contemporary living.

Close to Twickenham stadium, local shops, and amenities, early viewing to avoid disappointment.



Directions from Milestone and Collis 86 Heath Rd, Strawberry Hill, Twickenham TW14BW, Head east on Heath Rd/A305/A311 towards Tennyson Ave, Continue to follow A305, 0.3 mi, Slight left onto London Rd/A310, 0.7 mi, At London Rd Roundabout, take the 2nd exit and stay on London Rd/A310, Continue to follow A310, 0.4 mi, Turn left onto Mogden Ln, 0.3 mi, Turn right onto Beaumont Pl, 0.1 mi, Turn left, 115 ft, Beaumont Pl, Isleworth, TW7 7LB

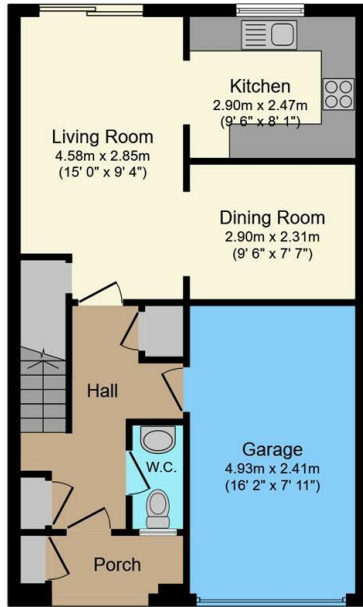
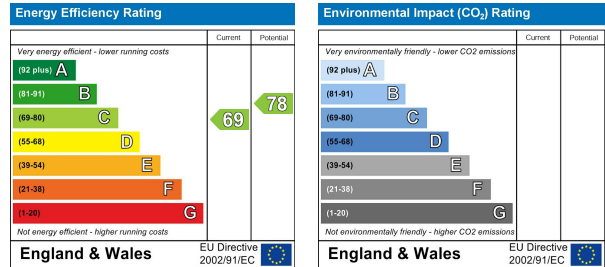
TW7 7LB lies on Beaumont Place in Isleworth. TW7 7LB is located in the Isleworth electoral ward, within the London borough of Hounslow and the English Parliamentary constituency of Brentford and Isleworth. The Sub Integrated Care Board (ICB) Location is NHS North West London ICB - W2U3Z and the police force is Metropolitan Police.



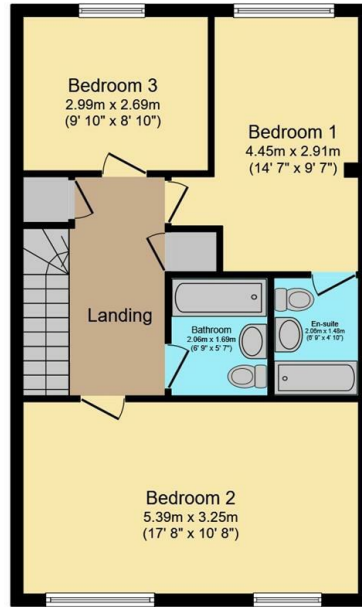
**Nearby schools**

- Ivybridge Primary School, Summerwood Road, Mogden Lane, Isleworth, TW7 7QB, Primary 566m
- Worple Primary School, Queens Terrace, Isleworth, TW7 7DB, Primary 975m
- St Stephen's C E Primary School, Winchester Road, Twickenham, TW1 1LF, Primary 978m

Council tax band D



**Ground Floor**



**First Floor**

Total floor area 117.7 sq.m. (1,267 sq.ft.) approx

This floor plan is for illustrative purposes only. It is not drawn to scale. Any measurements, floor areas (including any total floor area), openings and orientation are approximate. No details are guaranteed, they cannot be relied upon for any purpose and they do not form part of any agreement. No liability is taken for any error, omission or misstatement. A party must rely upon its own inspection(s). Powered by [www.focalagent.com](http://www.focalagent.com)

It is our aim to provide particulars that are both accurate and reliable but they are not guaranteed and would not form part of any offer or contract. Please contact us if you require clarification and we would be happy to assist. Please also note that the appliances and heating system have not been tested and therefore, no warranties can be given as to their condition.