



Asking Price £300,000 | Apartment | Leasehold - Share of Freehold

- One bedroom conversion apartment
- Four piece bathroom suite
- Close to the River Thames
- New roof November 2023 which comes with a 10 year guarantee
- Richmond upon Thames resident's parking permit available
- Open planned living at its best
- Located in the "Heart of Twickenham"
- Close to main line station, local, shops, bars and restaurants
- Shared freehold and no onward chain
- Ideal investment or first time buy

020 8892 1313



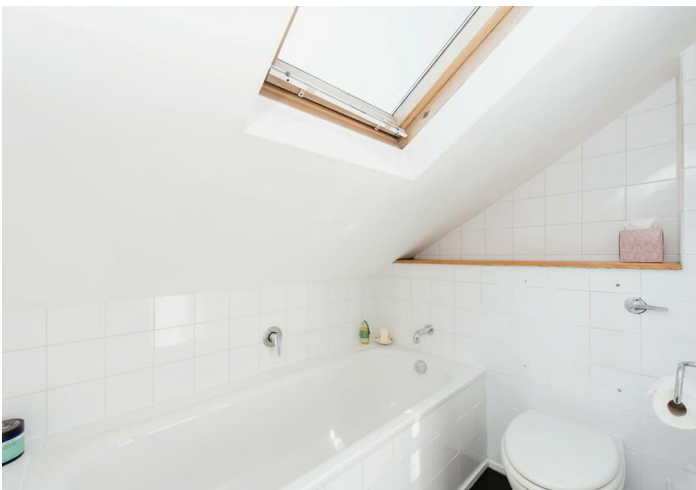
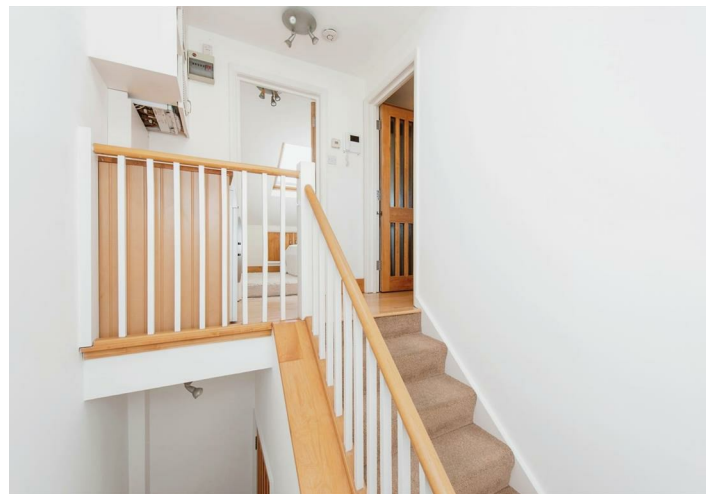
31 York Street, Twickenham, TW1 3JZ

Milestone and Collis are please to offer this one bedroom top apartment. Open plan living at its best, bedroom with eves storage and large Velux window allowing an abundance of light, a fresh white bathroom suite with an additional shower cubicle. extra storage/utility in the hall.

Over 100 year lease, Richmond upon Thames resident's parking permit available, Shared freehold and no onward chain make this an ideal purchase for first time or investment buyers.

Located in the "Heart of Twickenham" which give you easy access to shop, bars, restaurants, the River Thames, main line train station and local buses.

Early viewing recommended to avoid disappointment.



Directions from Milestone and Collis Sales 86 Heath Rd, Strawberry Hill, Twickenham TW1 4BW Head east on Heath Rd/A305/A311 towards Clifden Rd, Continue to follow A305, 0.3 mi Slight right onto York St/A305, 482 ft York St Twickenham

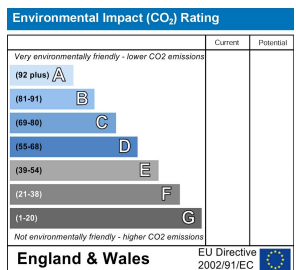
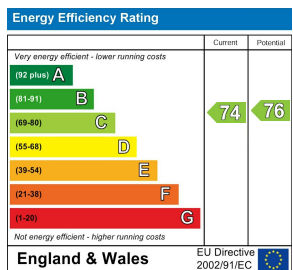


TW1 3JZ lies on York Street in Twickenham. TW1 3JZ is located in the Twickenham Riverside electoral ward, within the London borough of Richmond upon Thames and the English Parliamentary constituency of Twickenham. The Sub Integrated Care Board (ICB) Location is NHS South West London ICB - 36L and the police force is Metropolitan Police.

Near by schools

- St Mary's Church of England Primary School, Amyand Park Road, Twickenham, TW1 3HE, Primary, 229m
- St Richard Reynolds Catholic High School, Clifden Road, Twickenham, London, TW1 4LT, Secondary, 474m
- Orleans Park School, Richmond Road, Twickenham, TW1 3BB, Secondary, 542m

Council tax band C



Total floor area 41.6 m² (448 sq.ft.) approx
Restricted height 6.6 m² (71 sq.ft.)

This floor plan is for illustrative purposes only. It is not drawn to scale. Any measurements, floor areas (including any total floor area), openings and orientation are approximate. No details are guaranteed, they cannot be relied upon for any purpose and they do not form part of any agreement. No liability is taken for any error, omission or misstatement. A party must rely upon its own inspection(s).
Powered by www.focalagent.com

It is our aim to provide particulars that are both accurate and reliable but they are not guaranteed and would not form part of any offer or contract. Please contact us if you require clarification and we would be happy to assist. Please also note that the appliances and heating system have not been tested and therefore, no warranties can be given as to their condition.