



Asking Price £500,000 | Apartment | Leasehold - Share of Freehold

- Two double bedroom riverside apartment
- Shared freehold
- Exceptional views of the River Thames
- Residents parking
- Access to a private slipway to the Thames
- Large living room with stunning panoramic views of the River Thames
- Modern kitchen
- Family bathroom and Shower room
- Large direct river fronted communal gardens.
- Opportunity for a pontoon mooring via the residents' boat club

020 8892 1313



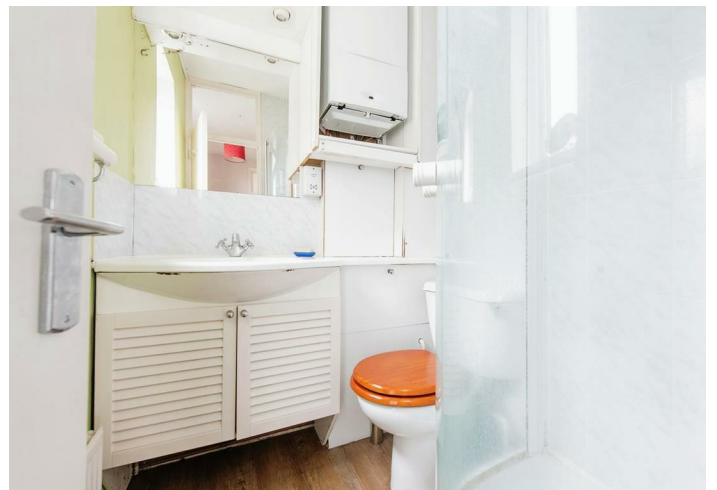
Fairwater House, Teddington, TW11 8AY

Milestone and Collis is proud to offer this Riverside apartment on Twickenham Road in the charming area of Teddington, this delightful apartment is a true gem waiting to be discovered. Boasting not just one, but two bedrooms and bathrooms, this second-floor apartment is perfect for those seeking a comfortable and spacious living space.

As you step inside, you are greeted by a generously sized reception room that offers breathtaking panoramic views of the River Thames. Imagine waking up to the tranquil sights of the river every morning from the comfort of your own home. The two double bedrooms are elegantly designed with built-in fitted wardrobes, providing ample storage space for your belongings. The master bedroom, in particular, treats you to stunning views of the River Thames, creating a serene and picturesque setting.

This apartment also features a family bathroom and an additional shower room for your convenience. Storage will never be an issue with the extra storage space available within the property. Moreover, Fairwater House presents attractive riverside gardens, complete with a manicured lawn and a paved area. For those with a penchant for boating, a private slipway to the Thames and a pontoon with moorings (allocated via the boat club) are among the many perks of living in this riverside abode.

Don't miss this opportunity to reside in a sought-after location with unparalleled river views and a host of amenities at your doorstep. Embrace a lifestyle of comfort, elegance, and natural beauty at this remarkable apartment in Teddington.

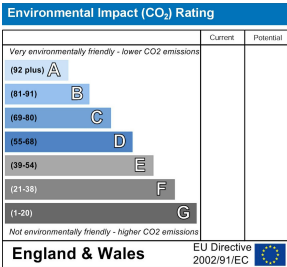
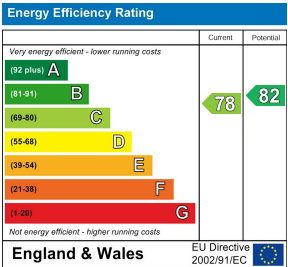


Milestone and Collis Sales 86 Heath Rd, Strawberry Hill,
Twickenham TW1 4BW, Head east on Heath Rd/A305/A311
towards Clifden Rd, 0.2 mi Turn right onto Cross Deep/A310, 0.5
mi At the roundabout, take the 1st exit onto Strawberry Vale/A310
Continue to follow A310 Destination will be on the left

TW11 8AJ lies on Twickenham Road in Teddington. TW11 8AJ is
located in the Teddington electoral ward, within the London
borough of Richmond upon Thames and the English
Parliamentary constituency of Twickenham. The Sub Integrated
Care Board (ICB) Location is NHS South West London ICB - 36L
and the police force is Metropolitan Police.

Near by schools
Newland House School, Waldegrave Park, Twickenham, TW1
4TQ, 566m
St Mary's and St Peter's Church of England Primary School,
Somerset Road, Teddington, TW11 8RX, Primary, 856m
St Richard's Church of England Primary School
Ashburnham Road, Ham, Richmond, TW10 7NL, Primary, 876m

Council tax band E



Total floor area 67.0 m² (721 sq.ft.) approx
This floor plan is for illustrative purposes only. It is not drawn to scale. Any measurements, floor areas (including any total floor area), openings and orientation are approximate. No details are guaranteed, they cannot be relied upon for any purpose and they do not form part of any agreement. No liability is taken for any error, omission or misstatement. A party must rely upon its own inspection(s).
Powered by www.focalagent.com

It is our aim to provide particulars that are both accurate and reliable but they are not guaranteed and would not form part of any offer or contract. Please contact us if you require clarification and we would be happy to assist. Please also note that the appliances and heating system have not been tested and therefore, no warranties can be given as to their condition.