



Asking Price £550,000 | Apartment | Leasehold - Share of Freehold

- Two double bedroom riverside apartment
- Shared freehold
- Exceptional views of the River Thames
- Residents parking
- Access to a private slipway to the Thames
- Large living room with stunning panoramic views of the River Thames
- Modern kitchen
- Family bathroom and Shower room
- Large direct river fronted communal gardens.
- Opportunity for a pontoon mooring via the residents' boat club

020 8892 1313



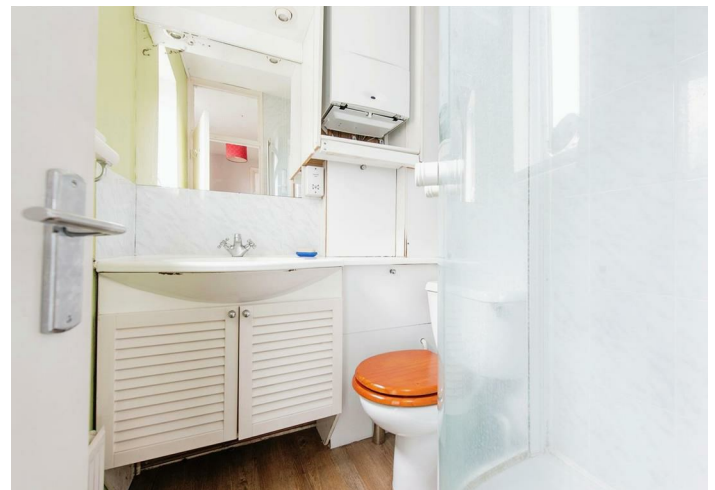
Fairwater House, Teddington, TW11 8AY

Milestone and Collis are proud to offer this spacious two double bedroom second floor apartment, in a highly sought after riverside location, benefits from fantastic river views, the spacious reception room has two large windows with panoramic views along the River Thames.

The two double bedrooms have built fitted wardrobes and the master bedroom again with stunning views of the River Thames.

Other benefits include a Family bathroom and a additional shower room, the property is also blessed with additional storage.

Fairwater House also benefits from attractive riverside gardens including a manicured lawn, paved area and a private slipway to the Thames and a pontoon offering moorings (allocated via the boat club).



Milestone and Collis Sales 86 Heath Rd, Strawberry Hill,
 Twickenham TW1 4BW, Head east on Heath Rd/A305/A311
 towards Clifden Rd, 0.2 mi Turn right onto Cross Deep/A310, 0.5
 mi At the roundabout, take the 1st exit onto Strawberry Vale/A310
 Continue to follow A310 Destination will be on the left



TW11 8AJ lies on Twickenham Road in Teddington. TW11 8AJ is
 located in the Teddington electoral ward, within the London
 borough of Richmond upon Thames and the English
 Parliamentary constituency of Twickenham. The Sub Integrated
 Care Board (ICB) Location is NHS South West London ICB - 36L
 and the police force is Metropolitan Police.

Near by schools

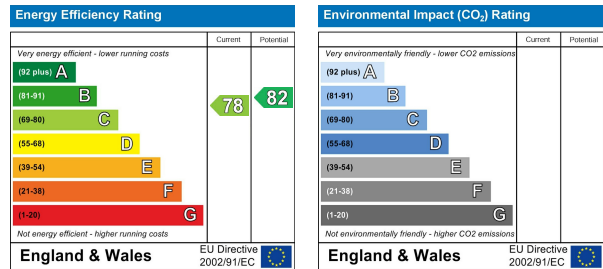
Newland House School, Waldegrave Park, Twickenham, TW1
 4TQ, 566m

St Mary's and St Peter's Church of England Primary School,
 Somerset Road, Teddington, TW11 8RX, Primary, 856m

St Richard's Church of England Primary School

Ashburnham Road, Ham, Richmond, TW10 7NL, Primary, 876m

Council tax band E



Total floor area 67.0 m² (721 sq.ft.) approx

This floor plan is for illustrative purposes only. It is not drawn to scale. Any measurements, floor areas (including any total floor area), openings and orientation are approximate. No details are guaranteed, they cannot be relied upon for any purpose and they do not form part of any agreement. No liability is taken for any error, omission or misstatement. A party must rely upon its own inspection(s).
 Powered by www.focalagent.com

It is our aim to provide particulars that are both accurate and reliable but they are not guaranteed and would not form part of any offer or contract. Please contact us if you require clarification and we would be happy to assist. Please also note that the appliances and heating system have not been tested and therefore, no warranties can be given as to their condition.