



Asking Price £425,000 | Flat | Leasehold - Share of Freehold

- Share freehold with New 999 year lease
- New kitchen, carpets and flooring
- Newly decorated
- Own front door and letter box
- Ideally located for local shops and transport links
- Split level two bedroom
- Private rear garden with rear access
- Video entry security system
- Large open plan kitchen living room
- No onward chain

020 8892 1313

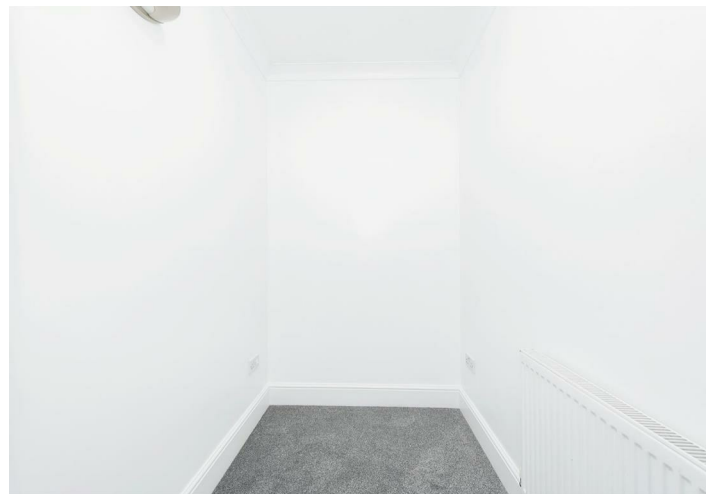


Kingston Road, Teddington, TW11 9JN

Milestone and Collis is proud to offer this well presented two bedroom split level flat, come with a new 999 year lease and a share of the freehold.

Large open plan kitchen and lounge opening on to a private garden with rear access, newly decorated with new kitchen, carpets and flooring, video entry system, own front door and post box. ideally located for local shops and transport links.

No onward chain



Directions from Milestone and Collis, 86 Heath Rd, Strawberry Hill, Twickenham Tw1 4bw, Take A310 to Teddington Park Rd in Teddington, 4 min (1.1 mi), Take Cambridge Rd to High St/A313, 3 min (0.7 mi), Turn left onto High St/A313, 14 sec (194 ft), Follow Kingston Ln to Kingston Rd/A310, 2 min (0.4 mi) At the roundabout, take the 2nd exit onto Kingston Rd/A310, 32 sec (0.1 mi) Tw11 9jn Kingston Rd, Teddington

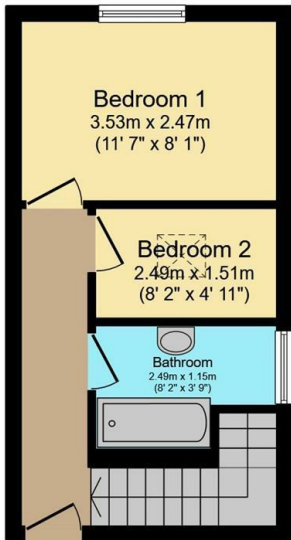
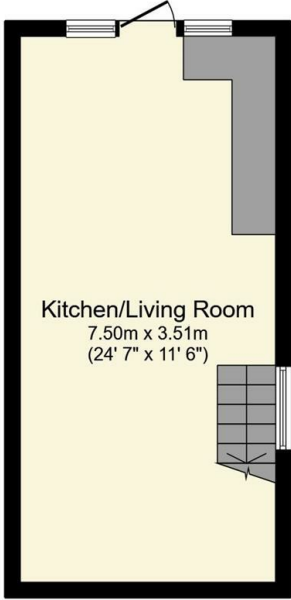
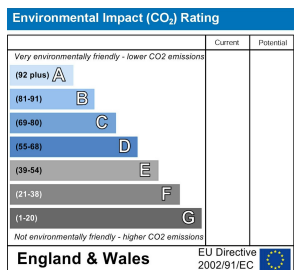
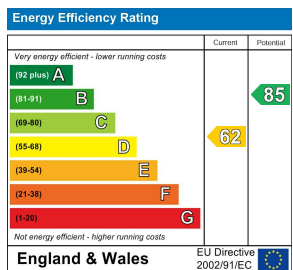


TW11 9JN lies on Kingston Road in Teddington. TW11 9JN is located in the Hampton Wick & South Teddington electoral ward, within the London borough of Richmond upon Thames and the English Parliamentary constituency of Twickenham. The Sub Integrated Care Board (ICB) Location is NHS South West London ICB - 36L and the police force is Metropolitan Police.

Nearest schools to TW11 9JN

- Sacred Heart Roman Catholic Primary School, St Mark's Road, Teddington, TW11 9DD, Primary, 236m
- Collis Primary School, Fairfax Road, Teddington, TW11 9BS, Primary, 413m
- Teddington School, Broom Road, Teddington, TW11 9PJ, Secondary, 500m

Council tax band C



Total floor area 50.7 m² (545 sq.ft.) approx
 This floor plan is for illustrative purposes only. It is not drawn to scale. Any measurements, floor areas (including any total floor area), openings and orientation are approximate. No details are guaranteed, they cannot be relied upon for any purpose and they do not form part of any agreement. No liability is taken for any error, omission or misstatement. A party must rely upon its own inspection(s).
 Powered by www.focalagent.com

It is our aim to provide particulars that are both accurate and reliable but they are not guaranteed and would not form part of any offer or contract. Please contact us if you require clarification and we would be happy to assist. Please also note that the appliances and heating system have not been tested and therefore, no warranties can be given as to their condition.