



Asking Price £415,000 | Apartment | Leasehold

- Top floor apartment with lovely views of David Lloyd golf course and leisure complex
- Own balcony
- Allocated parking
- Long lease
- Ideal investment buy
- Two double bedroom
- Communal garden
- Garage
- Ideal first time buy
- Early viewing recommended to avoid disappointment

020 8892 1313



# Warwick Lodge, Twickenham, TW2 5JB

Milestone and Collis is proud to offer this spacious two double bedroom top floor apartment with direct access to a private balcony.

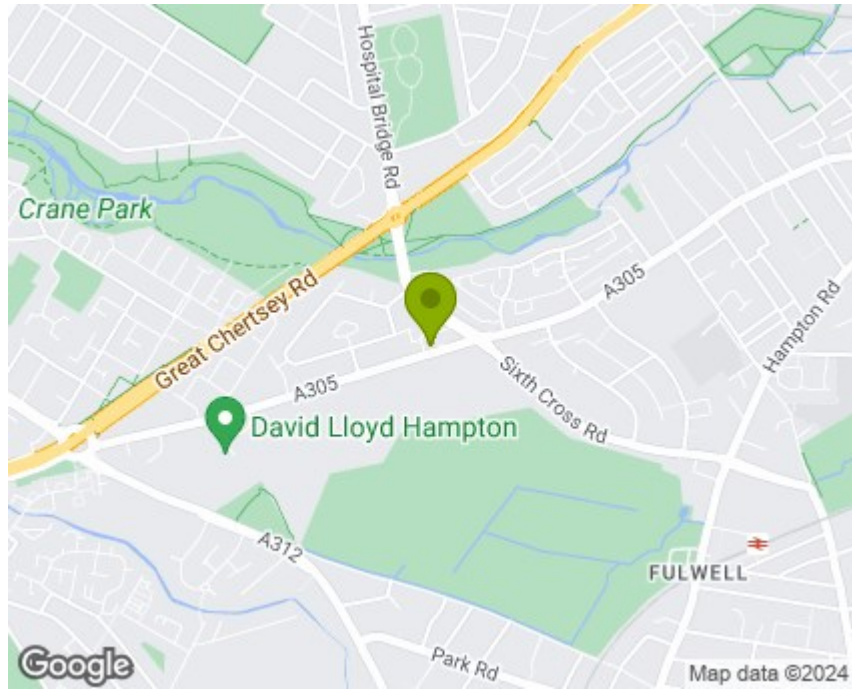
This well proportioned two double bedroom property kitchen, family bathroom, a good size reception with doors opening on to your own private balcony, which looks over a communal grassed area and David Lloyd golf course, allocated parking and garage.

Ideally located for access to local shops, amenities, train stations, bus routes and some of the most popular schools in the area.

Early viewing strongly recommended to avoid disappointment



Starting at Milestone and Collis, 86 Heath Rd, Twickenham Tw1 4bw, Head east on Heath Rd/A305/A311 towards Clifden Rd, 0.1 miles, Turn left onto Cophall Gardens 0.2 miles, Turn left onto Clifden Rd, 0.2 miles, Turn right onto Heath Rd/A305/A311, 0.3 miles, Continue straight onto The Grn/A305, Continue to follow A305 1.1 miles, Turn right Restricted-usage road 46 ft, Tw2 5jb



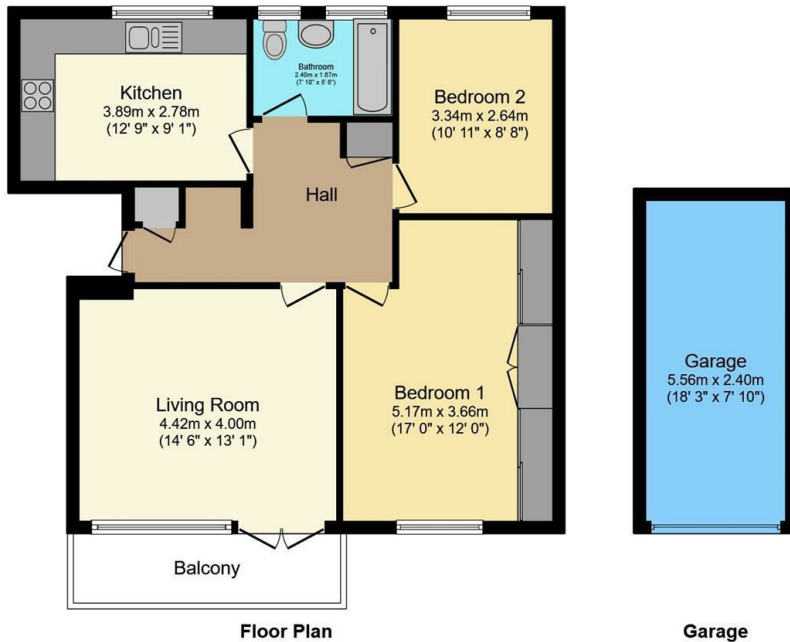
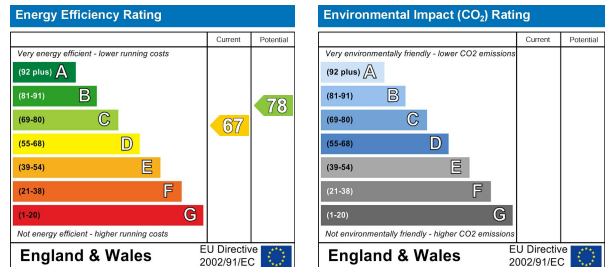
**About**

Tw2 5jb lies on Staines Road in Twickenham. Tw2 5jb is located in the West Twickenham electoral ward, within the London borough of Richmond upon Thames and the English Parliamentary constituency of Twickenham and the police force is Metropolitan Police.

**Near by schools**

- Twickenham School, Percy Road, Twickenham, Tw2 6jw, Secondary 572m
- Waldegrave School, Fifth Cross Road, Twickenham, Tw2 5lh, Secondary 861m
- Heathfield Junior School, Cobbett Road, Twickenham, Tw2 6en Primary 963m

Council tax band D



Total floor area 84.2 sq.m. (906 sq.ft.) approx  
 This floor plan is for illustrative purposes only. It is not drawn to scale. Any measurements, floor areas (including any total floor area), openings and orientation are approximate. No details are guaranteed, they cannot be relied upon for any purpose and they do not form part of any agreement. No liability is taken for any error, omission or misstatement. A party must rely upon its own inspection(s).  
 Powered by [www.focalagent.com](http://www.focalagent.com)

It is our aim to provide particulars that are both accurate and reliable but they are not guaranteed and would not form part of any offer or contract. Please contact us if you require clarification and we would be happy to assist. Please also note that the appliances and heating system have not been tested and therefore, no warranties can be given as to their condition.