



69 ABINGER ROAD PORTSLADE, BN41 1SD

£1,950 PER CALENDAR

A delightful three-bedroom Victorian terraced house offers a perfect blend of modern living and classic character. Spanning over 1,000 square feet, the property has been newly modernised throughout, ensuring a fresh and inviting atmosphere.

Upon entering, you are greeted by two spacious reception rooms that provide ample space for both relaxation and entertaining. The well-appointed layout flows seamlessly, making it ideal for family life or hosting friends. The heart of the home is undoubtedly the new contemporary kitchen, which is designed to meet the demands of modern living while retaining the charm of its Victorian roots.

The property boasts three bedrooms, including a principle bedroom complete with an en suite showeroom. The additional two bedrooms are perfect for family members, guests, or even a home office, providing flexibility to suit your lifestyle.

One of the standout features of this home is the west-facing garden, which invites an abundance of natural light and provides a lovely outdoor space for gardening, or simply enjoying the sunshine. With its prime location in Portslade, you will find yourself within easy reach of local amenities, schools, and transport links, making this home not only a beautiful place to live but also a practical choice for modern living. The property comes unfurnished and is available NOW!

**Nicholas
James**

SALES LETTINGS AUCTIONS





69 Abinger Road

Approximate Gross Internal Area = 86.2 sq m / 928 sq ft

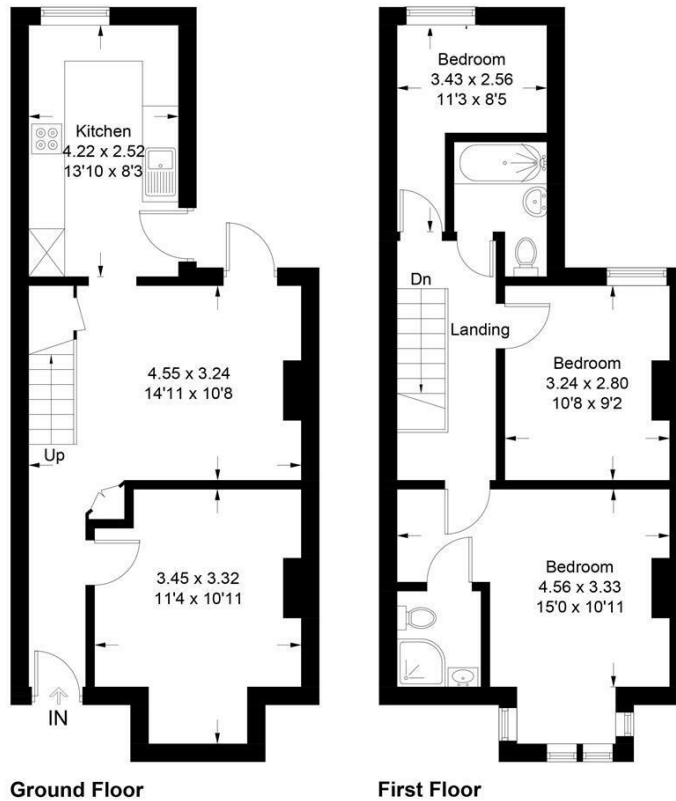


Illustration for identification purposes only, measurements are approximate, not to scale. Fourlabs.co © (ID1201835)



Energy Efficiency Rating		
	Current	Potential
Very energy efficient - lower running costs		
(92 plus) A		87
(81-91) B		
(69-80) C	69	
(55-68) D		
(39-54) E		
(21-38) F		
(1-20) G		
Not energy efficient - higher running costs		
England & Wales	EU Directive 2002/91/EC	

Agents Note: Whilst every care has been taken to prepare these particulars, they are for guidance purposes only. All measurements are approximate and are for general guidance purposes only and whilst every care has been taken to ensure their accuracy, they should not be relied upon and potential buyers/tenants are advised to recheck the measurements

Hove Sales
Ground Floor 8 The Drive
Hove
East Sussex
BN3 3JA

01273 917915
hello@nicholasjamesproperty.co.uk
www.nicholasjamesproperty.co.uk

**Nicholas
James**

SALES LETTINGS AUCTIONS