



wards
Residential

4 Enderby Road, Thurlaston, LE9 7TF
£260,000 Offers over £900.00 Per calendar month

Freehold

NO CHAIN. A superb opportunity to occupy this charming, newly refurbished three bedroom semi detached house located in the highly sought after village of Thurlaston. The village benefits from a wide range of amenities including a primary school and two public houses together with convenient access to Leicester city centre via the A47 (Hinckley Road) and to the M1 Motorway at Enderby. The accommodation benefits from a wealth of period features including timber doors and panelling and briefly comprises: Ground Floor: Kitchen/Diner, Lounge, Utility Room, Shower Room. First Floor: three Bedrooms. Externally, there are attractive gardens to the front elevation, along with a courtyard and yard area to the rear. UPVC double glazing and gas fired central heating. Council Tax Band: B. EPC Rating: D. Security Deposit: £1096.

Kitchen/Diner

4.81 x 4.25 Metres

With period timber front door, brick feature fireplace to Dining Area, panelled staircase and understairs store cupboard. The Kitchen area benefits from brand new grey base and wall units with solid wood work surfaces over and stainless-steel sink and drainer. Ceiling spotlights and extractor fan. Brand new vinyl flooring and UPVC double glazed window to the front elevation.

Lounge

4.5 x 3.48 Metres

Open fireplace with wooden surround, brick back panel and tiled hearth. With UPVC double glazed bay window to the front elevation.

Utility Room

2.81 x 2.21 Metres

Fitted with base and wall units with granite effect work surface over and stainless steel sink and drainer. Plumbing for a washing machine and gas fired central heating boiler. Brand new vinyl flooring and loft access hatch. Timber door providing access to outdoor courtyard and UPVC double glazed window to the rear elevation.

Shower Room

2.8 x 1.46 Metres

Three piece white suite comprising of pedestal sink, low



Bedroom 1

3.78 x 3.29 Metres

With new grey carpeting, cast iron fireplace and UPVC double glazed window to the front elevation.

Bedroom 2

2.31 x 3.65 Metres

With new grey carpeting, cast iron fireplace and UPVC double glazed window to the side elevation.

Bedroom 3

2.13 x 3.68 Metres

With new grey carpeting, built in store cupboard and UPVC double glazed window to the front elevation.

Outside

To the front elevation, there are attractive and well maintained front gardens with a cobblestone path leading to the front door. The property is screened from the road by an attractive winter jasmine. The garden areas benefit from attractive planting including a rose, with the remainder of the area predominantly laid to lawn. To the front elevation, there is a courtyard area with brick outbuilding (1.73m x 0.94m), surfaced with brick paving and enclosed by brick walling. The rear yard is accessed from both the front garden and courtyard. The rear yard is surfaced with cobblestones and enclosed by brick walling.



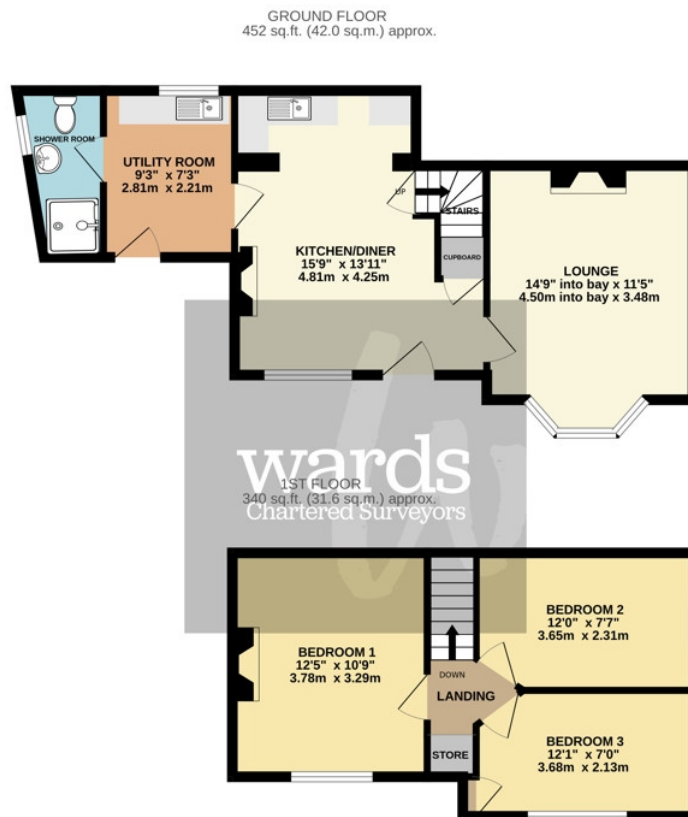


EPC Rating - D(57)

Council Tax Band - B

Call 01455 251771 to make an appointment to view this property





TOTAL FLOOR AREA - 792 sq.ft. (73.6 sq.m.) approx.
Whilst every attempt has been made to ensure the accuracy of the floorplan contained here, measurements of doors, windows, rooms and any other items are approximate and no responsibility is taken for any error, omission or mis-statement. This plan is for illustrative purposes only and should be used as such by any prospective purchaser. The services, systems and appliances shown have not been tested and no guarantee as to their operability or efficiency can be given.
Made with Metropix C2021



20 Station Road
Hinckley Leicestershire LE10 1AW

01455 251771
info@wardsonline.co.uk

wardsonline.co.uk



These particulars, whilst intended & believed to be accurate are set out as a general outline only and do not constitute any part of an offer or contract. Intending purchasers should not rely on them as statements of representation of fact, but must satisfy themselves by inspection or otherwise as to their accuracy. No person in this firm's employment has the authority to make or give any representation or warranty in respect of the property.

Ward Surveyors Limited - Registered in England No.4567836