



Leicester Road

New Packington
Ashby-de-la-Zouch
LE65 1TQ

£550,000

****SHOWHOME OPENING THIS WEEKEND**** Sat & Sunday 19th & 20th October, 1pm- 4pm at Myring Oaks..
A FANTASTIC COLLECTION of 9 individual HIGH SPECIFICATION 4 & 5 bedroom detached FAMILY HOMES set on a private drive, on the fringe of Ashby town centre, prices from £490,000** HELP TO BUY AVAILABLE**



Property Features

- Select Development
- 9 Individual Homes
- High Specification
- 4 & 5 Bedrooms
- Help to Buy
- Carpets Incl
- Underfloor Heating
- German Kitchen
- Quartz Worktops
- Roca Bathrooms

Full Description

Myring Oaks by Maruti Developments, a stunning collection of 9 individual properties offering a range of attractive 4 & 5 bedroom family homes within a select development on the fringe of Ashby de la Zouch.

Each property has been individually designed and finished to an extremely high specification, all now complete and providing ready to move into accommodation. All properties will benefit from gas central heating with underfloor heating to the ground floor, luxury fitted carpets throughout, Amtico vinyl floor tiles, fibre connectivity, brushed stainless steel sockets & USB switches and powered Velux windows.

The Kitchen & Utility have been designed by Sherwin Hall Kitchens with a German Rotpunkt range of units with Quartz work tops, LED lighting, integrated Bosch appliances and

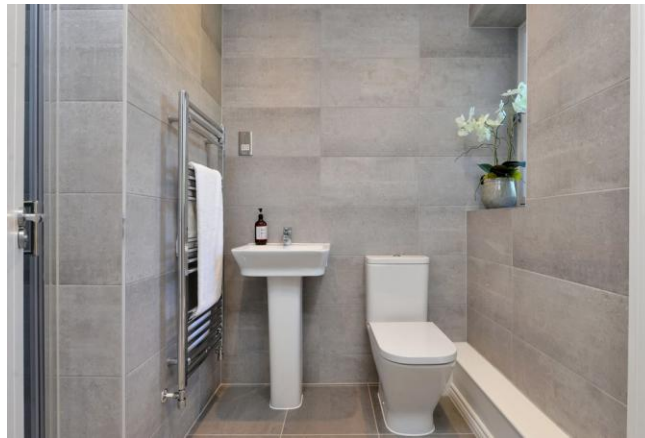
Blanco sink & taps. All bathrooms are fitted with Roca suites with floor to ceiling tiling. Externally the drive ways provide ample parking with access to the garages and all gardens are lawned with patio areas

Plot 5 Hyde.. An attractive 3 storey 5 bedroom detached family home of 2078 sq. ft, occupying a fine plot at the head of the development, adjacent to the amenity land. A facing brick exterior under a Spanish slate roof and flush casement windows, add to the character of the building. Internally a spacious entrance Hall, cloakroom/wc, sitting room, open plan kitchen with vaulted ceiling, with dining room and sitting room with bi-folds, 1st floor master bedroom with en-suite dressing & shower rooms, family bathroom, 2nd floor, 2 further bedrooms and bed 5/study, shower room. Lawned gardens to front and rear, single garage and driveway.
(Internal photos, from the showhome plot 4)

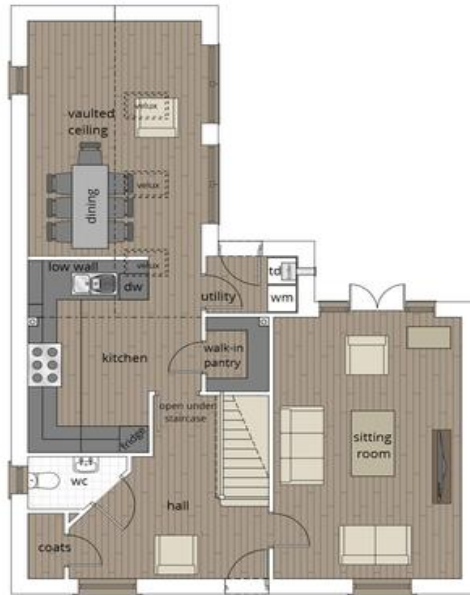
Leicester Road, New Packington enjoys a most accessible and convenient location, lying just 1 mile from Ashby town centre and a leisurely 15 minute stroll into the heart of the town. A vibrant town centre awaits with numerous shops catering for all day to day needs, plenty of choice of restaurants, cafe's, small boutique shops and excellent schools.

Ease of access via the M42 leads to many East and West Midlands towns and cities, including Tamworth, Birmingham, Nottingham, Derby and Leicester. Leisure pursuits are provided by the National Forest with Hicks Lodge, Moira Furnace and Conkers all close by.

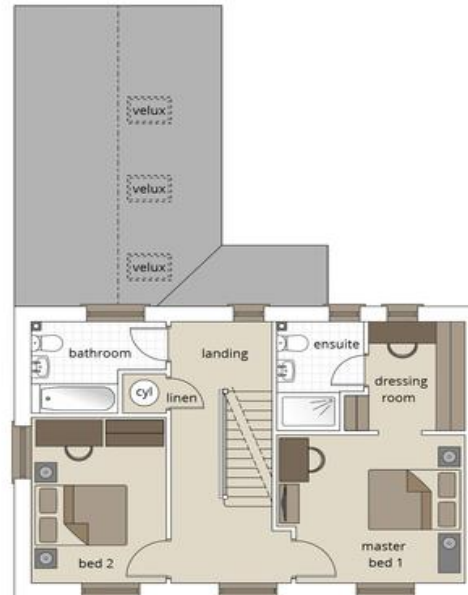




Hyde



GROUND FLOOR



FIRST FLOOR



SECOND FLOOR

8 The Pass Courtyard
43 Market Street
Ashby-De-La-Zouch
Leicestershire
LE65 1AG

www.whiteheadsestates.co.uk
info@whiteheadsestates.co.uk
01530 353170

Agents Note: Whilst every care has been taken to prepare these sales particulars, they are for guidance purposes only. All measurements are approximate and for general guidance purposes only and whilst every care has been taken to ensure their accuracy, they should not be relied upon and potential buyers are advised to recheck the measurements.