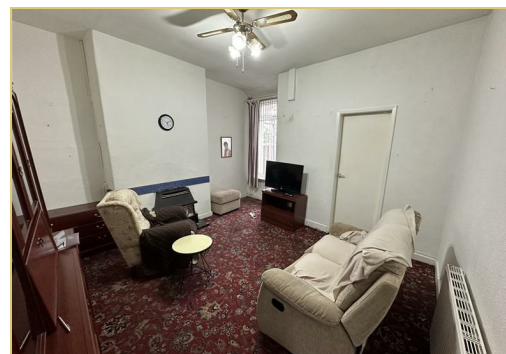
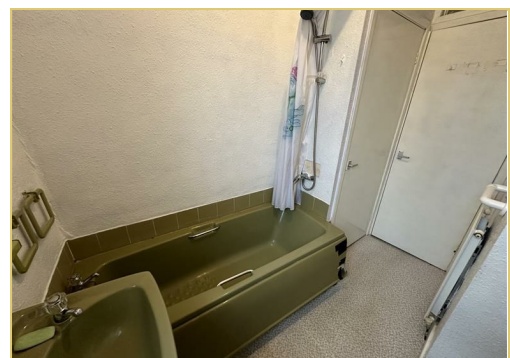
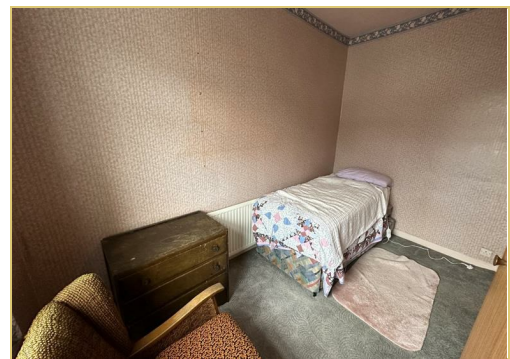




2 Gordon Street, Manchester, M18 8SL
£130,000

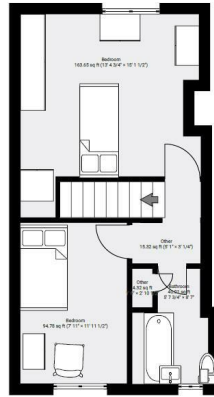
Discover the potential of this delightful 2 bedroom end terrace house, ideally situated in the popular Abbey Hey area of Gorton. This property is in need of updating throughout, offering a unique opportunity for first-time buyers to create their dream home or for investors looking for a promising project. The house features a spacious living area, perfect for relaxing and entertaining. The kitchen and dining spaces provide a blank canvas, ready for your creative touch to transform them into functional and inviting areas. Upstairs, two well-sized bedrooms offer ample space for comfortable living, whether for a growing family or as rental accommodation. One of the standout aspects of this property is its prime location. Abbey Hey boasts excellent transport links, ensuring easy access to central Manchester for work or leisure. Additionally, the area is renowned for its fantastic local schools, making it an ideal choice for families. The surrounding neighborhood is vibrant and welcoming, with a variety of local amenities, including shops, parks, and community facilities, all within easy reach. Whether you're looking to establish your first home or seeking a profitable investment, this property in Abbey Hey, Gorton, presents an exciting opportunity. Don't miss the chance to transform this house into a beautiful home that perfectly reflects your style and needs. Please contact Sanderson James to arrange your viewing.



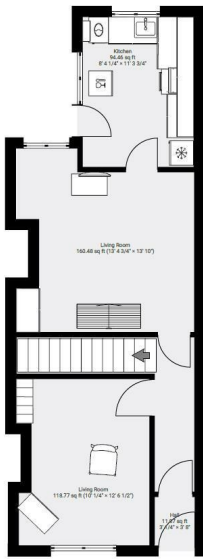




▼ 1st Floor



▼ Ground Floor



Energy Efficiency Rating	
Current	Potential
Very energy efficient - lower running costs	
(92 plus) A	
(81-91) B	
(69-80) C	
(55-68) D	
(39-54) E	
(21-38) F	
(1-20) G	
Not energy efficient - higher running costs	
England & Wales	EU Directive 2002/91/EC

Environmental Impact (CO ₂) Rating	
Current	Potential
Very environmentally friendly - lower CO ₂ emissions	
(92 plus) A	
(81-91) B	
(69-80) C	
(55-68) D	
(39-54) E	
(21-38) F	
(1-20) G	
Not environmentally friendly - higher CO ₂ emissions	
England & Wales	EU Directive 2002/91/EC

