

Springbourne Road, Liverpool

Spacious 3-Bedroom Terrace in the Heart of Aigburth – Ideal Family Home or Investment Opportunity

Welcome to Springbourne Road, L17 7BJ – a well-presented and generously proportioned three-bedroom terraced home located in the ever-popular Aigburth area of Liverpool. Set in a quiet residential street, this property offers the perfect blend of space, comfort, and convenience, ideal for families, first-time buyers, or investors alike.

Upon entering, you're greeted by two bright reception rooms, perfect for relaxing or entertaining. The good-sized kitchen to the rear offers ample storage and workspace, leading out to a private outdoor space.

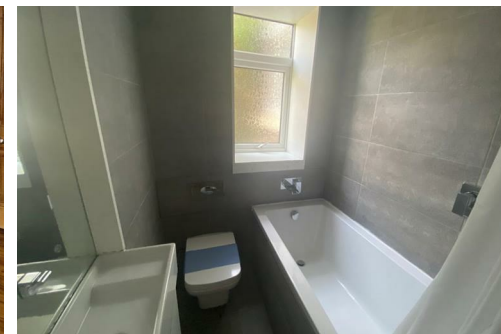
£250,000

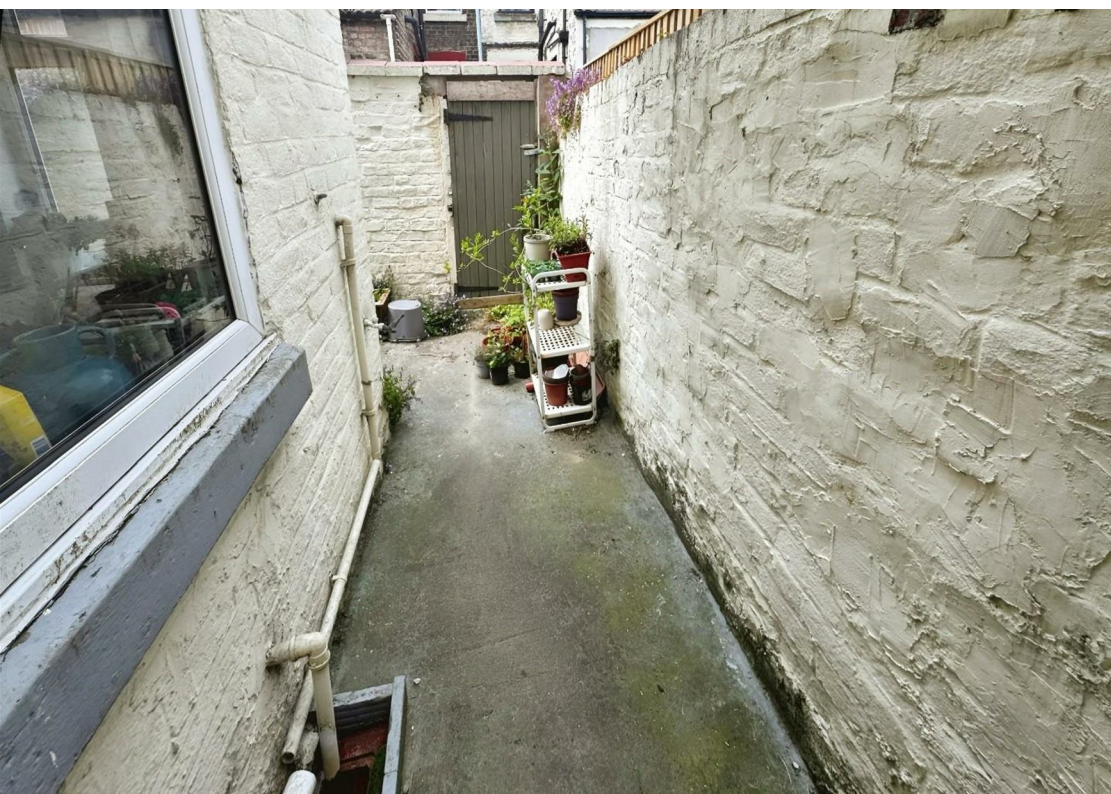
Council Tax: B



Springbourne Road, Liverpool

DESCRIPTION

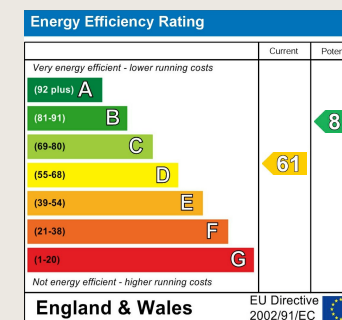






ENERGY PERFORMANCE CERTIFICATE

The energy efficiency rating is a measure of the overall efficacy of a home. The higher the rating the more energy efficient the home is and the lower the fuel bills will be.



These particulars are intended to give a fair and reliable description of the property but no responsibility for any inaccuracy or error can be accepted and do not constitute an offer or contract. We have not tested any services or appliances (including central heating if fitted) referred to in these particulars and the purchasers are advised to satisfy themselves as to the working order and condition. If a property is unoccupied at any time there may be reconnection charges for any switched off/disconnected or drained services or appliances - All measurements are approximate.

THINKING OF SELLING? If you are thinking of selling your home or just curious to discover the value of your property, Hunters would be pleased to provide free, no obligation sales and marketing advice. Even if your home is outside the area covered by our local offices we can arrange a Market Appraisal through our national network of Hunters estate agents.

0151 707 7777

107 Mount Pleasant, Liverpool, L3 5TB

liverpool@hunters.com