

BEDFORD CLOSE

CATTERICK GARRISON

LOVE PROPERTY.♡

LOVE THE JOURNEY



Bedford Close

Situated on the sought-after Leadmill Estate in Catterick Garrison, this well-presented three-bedroom mid-terrace home will appeal to first-time buyers, downsizers, and families alike. Local shops and schools are within easy walking distance, while the A1 is just a short drive away, making the location ideal for both everyday convenience and a strong sense of community.

The property offers a stylish kitchen with breakfast bar and dining area, thoughtfully designed to suit modern family living. Careful attention has been given to the detail throughout, creating a warm and welcoming space that feels instantly like home.

The generous lounge provides a comfortable setting for relaxing together, whether for quiet evenings or family movie nights. Its size allows for large seating arrangements, making it both practical and inviting.







Upstairs...

Upstairs, the home offers three well-sized bedrooms. Two are generous doubles with built-in wardrobes, while the third is a spacious single room with its own storage. All three rooms are neatly finished and well proportioned, making them ideal for family life or flexible use as needs change.

The family bathroom is smartly presented with a stylish finish and fitted with a bath with overhead shower, WC, and wash basin, providing a comfortable and practical space for everyday use.



Outside

To the rear, the property enjoys a fully enclosed garden combining decking, patio, and lawn, an ideal space for children to play safely and for the whole family to relax, entertain, and enjoy summer barbecues.



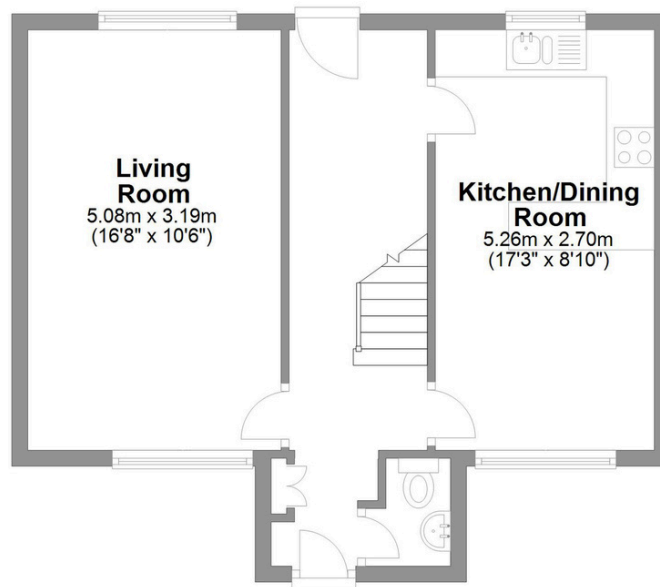
Finer Details

Postcode: DL9 3HL
Freehold
Council Tax Band: A
EPC Rating: TBC
Non-Standard Construction (concrete)
Garage
Gas Central Heating

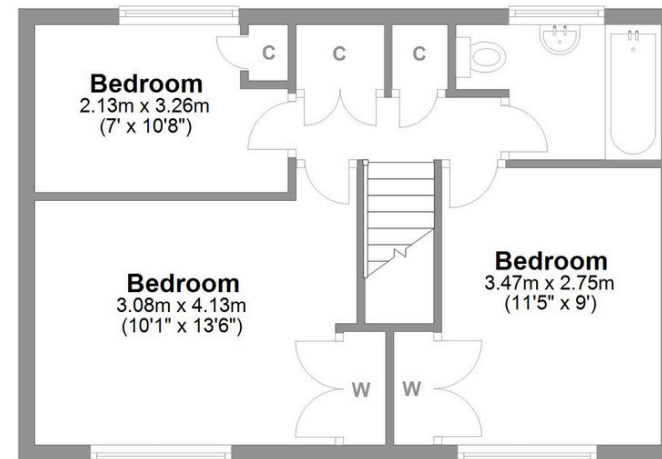


Bedford Close Catterick Garrison

Total area: approx. 84.5 sq. metres (909.9 sq. feet)



Ground Floor
Approx. 44.4 sq. metres (478.3 sq. feet)



First Floor
Approx. 40.1 sq. metres (431.6 sq. feet)

LOVE PROPERTY

Whilst every attempt has been made to ensure the accuracy of the floorplans contained here, measurements of doors, windows, rooms and any other items are approximate and no responsibility is taken for any error, omission or mis-statement. This plan is not drawn to scale and is for illustrative purposes only & should be used as such by any prospective purchaser. Created especially for Love Property by Vue3sixty Ltd