

CHEPSTOW CLOSE

CATTERICK GARRISON

LOVE PROPERTY.♥

LOVE THE JOURNEY



Welcome Home...

Arrive at this smart apartment building and head inside, where a well-kept entrance and hallway guide you to your front door on the top floor.

Step into your apartment which is located minutes from local shops and the town centre, with easy access to the A1.

The living area offers plenty of room for your large, comfortable sofas whilst your windows provide views of the surrounding area, making this a bright and inviting space to unwind.

When it's time to cook, the kitchen is just off the living room—a spacious layout with enough room for a dining table and chairs. There's ample cupboard space, a built-in oven and hob, and room for your washing machine, all combining for a functional kitchen.



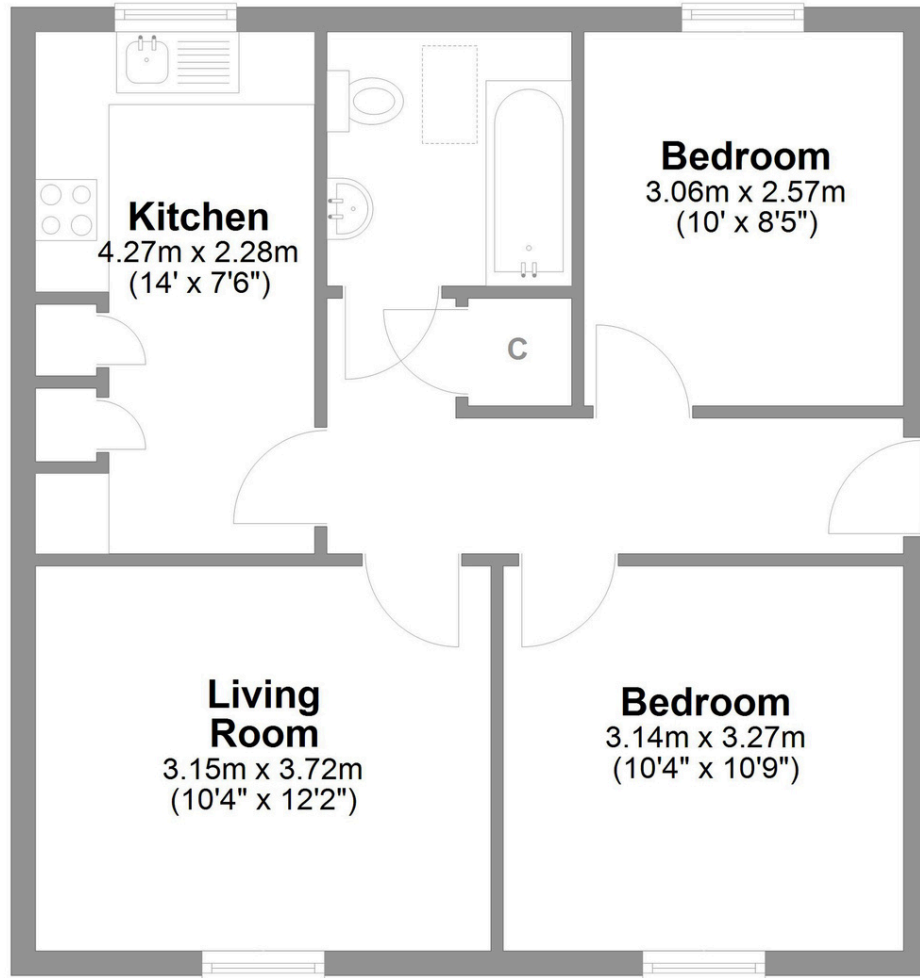


Time for bed...

Both double bedrooms are generously sized. With space for your bed and additional furniture, they offer comfort and flexibility. The elevated position brings in natural light through the double-glazed windows.

The bathroom is smart and simple, fitted with a crisp white suite. A shower over the bath adds convenience, and the tiled flooring is durable and low maintenance. And finally-an unexpected bonus-the apartment includes a loft. A rare and practical feature that provides valuable extra storage space.





Chepstow Close Colburn

Total area: approx. 53.2 sq. metres (572.2 sq. feet)



LOVE PROPERTY.

Whilst every attempt has been made to ensure the accuracy of the floorplans contained here, measurements of doors, windows, rooms and any other items are approximate and no responsibility is taken for any error, omission or mis-statement. This plan is not drawn to scale and is for illustrative purposes only & should be used as such by any prospective purchaser. Created especially for Love Property by Vue3sixty Ltd