

CLEVELAND ROAD

CATTERICK GARRISON

LOVE PROPERTY.♡

LOVE THE JOURNEY



Cleveland Road, Catterick Garrison

This lovely house is tucked away in a popular area of Catterick Garrison. This is a great location for families with lots of green space for children to play with a real family feel to the area.

With a driveway and allocated parking, you have plenty of space to park before heading inside. Enter into a small lobby area to take off your shoes and head left to the kitchen/diner. A lovely inviting space that is bright and airy with plenty of space for a table to enjoy family meals. Dressed in bold bottle green tiles the white cabinets and wood effect worktops look a treat.

There is a handy large under stair storage cupboard ideal for a pantry space or to stow away your appliances. The back door leads out to your patio area from here too, so you can head outside and enjoy your morning brew.

Your living room is to the front of the house and has a large window letting light flow through. An alcove for an electric fire to match the aesthetics of the room can be found in here, and there's ample space for your large settee and armchair.





Head upstairs...

When it's time to unwind for the night, make your way upstairs where you'll find two good sized double bedrooms and a modern family bathroom. The main bedroom is to the front of the property and enjoys views over the quiet street and nearby green space. It's a spacious and peaceful room ideal for a restful night's sleep.

The second bedroom overlooks the rear garden and open fields beyond, offering lovely views and a sense of privacy. It's also comfortably sized for a double bed, making it a perfect space for children, guests, or even a home office.

The family bathroom features a modern suite with a full-size bath and overhead shower; ideal for both quick morning routines and relaxing evening soaks, perfectly suited to busy family life.





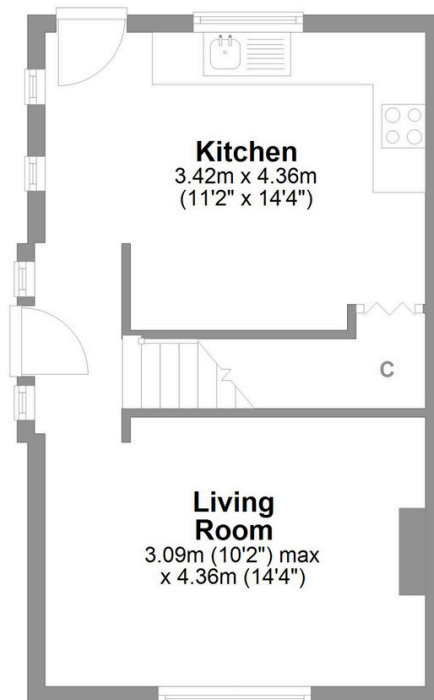
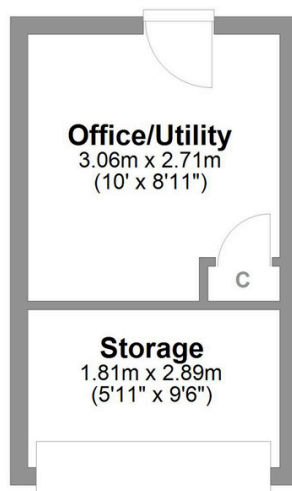
Outside...

The enclosed garden provides peace, privacy and safety. The grass area is perfect for playing family games or for the little ones to have some fun. It currently is also home to some wild hedgehogs. Meanwhile, the grownups can kick back and relax on the decked area which would be the ideal spot for a cosy outdoor set.

There is a brick built shed to store away all your gardening bits and pieces. It's in the garden that you access the rear section of the garage which has been divided to create a large utility or home office. The front section of the garage provides more storage space and is accessed via the garage door.

A delightful outdoor space for every member of the family to enjoy!



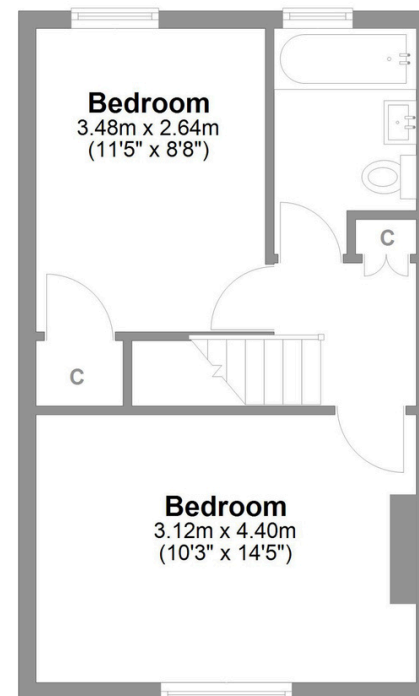


Ground Floor

Approx. 47.2 sq. metres (508.0 sq. feet)

Cleveland Road Catterick Garrison

Total area: approx. 80.3 sq. metres (864.1 sq. feet)



First Floor

Approx. 33.1 sq. metres (356.0 sq. feet)

LOVE PROPERTY

Whilst every attempt has been made to ensure the accuracy of the floorplans contained here, measurements of doors, windows, rooms and any other items are approximate and no responsibility is taken for any error, omission or mis-statement. This plan is not drawn to scale and is for illustrative purposes only & should be used as such by any prospective purchaser. Created especially for Love Property by Vue3sixty Ltd