

ROSE COTTAGE

SKEEBY

LOVE PROPERTY.♥

LOVE THE JOURNEY



Welcome home...

Skeeby is a lovely village located just moments away from the town of Richmond, where residents can find shops, schools, and other essentials. The village itself has a strong sense of community. The local pub, which is owned by the residents, is a proper gathering spot—good food, drinks, and a welcoming atmosphere. The village hall hosts regular coffee mornings and events, making it easy to get to know the neighbours. For those who enjoy the outdoors, there are plenty of scenic walking routes, especially popular with dog owners. Practicality is another bonus—located just down the road from Scotch Corner, it's an ideal location for commuters heading further afield.

Tucked right next door to the village pub, this stone-built mid-terrace cottage is ideal for first-time buyers, downsizers, or anyone in search of a peaceful retreat. Public parking at the front means you can pull up and step straight into your welcoming living space.

The living room is full of character, with exposed wooden beams and a log-burning stove creating a warm and inviting feel—perfect for sinking into your sofa on a chilly evening. As you move through the cottage, you'll find a kitchen that matches the home's rustic style, complete with a breakfast bar where you can enjoy meals while looking out onto the garden. The exposed beams continue here too, keeping the traditional feel intact.

Towards the back of the kitchen, there's a handy space that could serve as a utility area, giving you room for a washing machine and extra appliances.





Time for bed...

Upstairs, you'll find two well-proportioned bedrooms, each offering practicality. The main bedroom sits at the front of the house, featuring built-in wardrobes to maximise storage while still leaving plenty of space for a double bed and a dresser. It's a peaceful and airy room, ideal for winding down at the end of the day.

The second bedroom, also a double, overlooks the back garden and includes fitted cupboard space, making it a great option for guests, children, or even a home office.

The bathroom is a standout feature, designed with striking green metro tiles that add a bold touch of character. In here find your walk-in shower, while a large, frosted window allows natural light to pour in, making it a bright and refreshing space to start the day.





Outside...

Stepping out from the kitchen, you'll find a small patio area, perfect for placing a bistro set or a couple of chairs to enjoy your morning coffee. A pathway leads you through the length of the garden, which has plenty of space for planters, flower beds, or even a vegetable patch if you fancy growing your own.

Further back, there's room for an outdoor seating area—ideal for summer. With traditional stone walls bordering the space, the garden offers lovely views across the surrounding fields. It's a great spot to enjoy the peace and quiet of village life while still having the pub and local community just a stone's throw away.



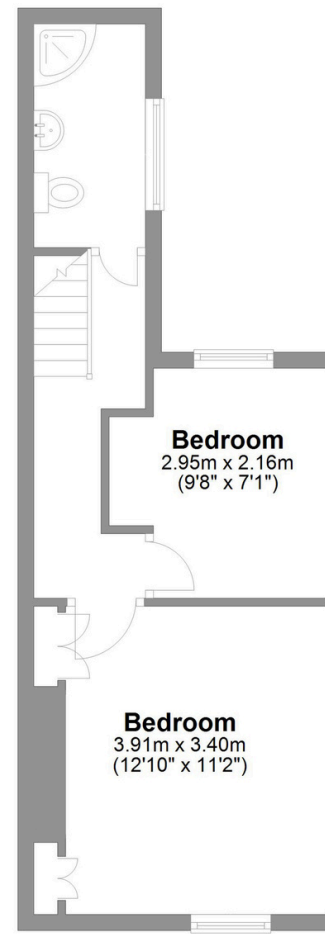
Rose Cottage Skeeby

Total area: approx. 61.7 sq. metres (664.3 sq. feet)



Ground Floor

Approx. 31.0 sq. metres (333.9 sq. feet)



First Floor

Approx. 31.0 sq. metres (333.9 sq. feet)

LOVE PROPERTY

Whilst every attempt has been made to ensure the accuracy of the floorplans contained here, measurements of doors, windows, rooms and any other items are approximate and no responsibility is taken for any error, omission or mis-statement. This plan is not drawn to scale and is for illustrative purposes only & should be used as such by any prospective purchaser. Created especially for Love Property by Vue3sixty Ltd