

# BECKSIDE

## CATTERICK VILLAGE

LOVE PROPERTY.♡

LOVE THE JOURNEY





# Catterick Village, North Yorkshire

Located in Catterick Village, a popular and sought after place to live, find your 6-bedroom, character home sat back overlooking the beck. All you need is found right at your doorstep, shops, schools, eateries and more. Additionally, indulge in leisurely morning strolls by the beck or on the village green, perfect for enjoying the refreshing ambiance of crisp spring mornings.





# Welcome home...

Arrive home, driving past the scenic beck where you can spend sunny evenings enjoying a peaceful stroll. Pull onto your driveway and into your garage, there is space for multiple cars here, ideal when the whole family come to visit! Your garage includes an electric roller door, as well as electric sockets internally, ideal for those who want to use the space as a home gym or a workshop. You also have a 'granny' electric vehicle charger outside the garage, perfect for you pulling your car up and charging overnight.

Inside your front door and you're greeted by a prominent hallway, a handy cupboard can be found at the end where coats and shoes can be stowed away. A cellar can be found too, with access via a door under the stairs.

Your large living room is to the right of the hall, once inside you'll appreciate the striking open fireplace that welcomes you inside. Your plush sofas can be placed to make the most of the space, so you can sit back and enjoy evenings in with family. At the back of the room, an arch leads to a cosy snug area, offering a quieter space for reading or listening to music. The snug opens out to the back garden through patio doors, blending indoor comfort with the fresh outdoor air, perfect for the warmer months.





# Time for a feast...

When it's time for dinner head through to your kitchen, which would also allow for a small dining set. The traditional style wood cabinets and herringbone flooring keep this kitchen in theme with the rest of the house. A statement blue Aga stove sits in front of a black tiled backsplash, the ideal tool for rustling up hearty meals. A two ringed electric stove and integral oven can also be found in the kitchen, should you only need to prepare a small dish for tea!

Once dinner is ready, pass plates through the hatch into the dining area. Your dining room allows for a large 8-seater table, ideal for festivities with all the family where everyone can gather around and delve into their homecooked dinner. In here a traditional fireplace can be found, maintaining the character of the house.







## Additional space..

To the back of the house your amazing garden room awaits. Underfloor heating keeps your feet nice and warm as you enter, the statement glass doors and windows flood the room with natural light, giving you a picture-perfect view of the back garden. The balcony above can be seen from here too, and little archways open into the hallway behind. This space is perfect for enjoying the sunshine whilst you sit back with a cup of tea in hand, if friends come to visit, this would be the ideal place to catch up, and if the weather is nice, open the bifold doors allowing the summer breezes through.

A little utility leads off the garden room, a great place for hiding washing away, or coming through when you've been out and about walking, so you can keep muddy shoes tucked away.







## Time for bed...

An additional quirk to this ground floor is the double bedroom, tucked away to the back of the house. With a cottage style window looking out over the back garden it gives a lovely feel to this space. To the side of the bedroom a handy WC can be found too.

Heading upstairs next, the large landing and hall leads you to each bedroom. All rooms allow for a double bed, and to the left of the hall is where you'll find two en suite bedrooms. Most of the bedrooms come equipped with built in wardrobes, meaning you can utilise the rest of the space however you desire. Four of the five bedrooms on this floor also offer charming views of the beck opposite, a lovely sight to wake up to seeing the ducks going about their morning.

The main, family bathroom is found to the left of the hallway and in here there's a spacious corner bath and large walk-in shower with a towel heater opposite.















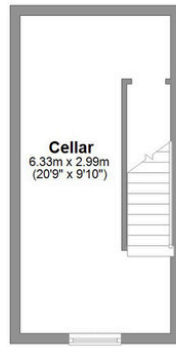


# Step outside...

Next to explore your large back garden, which begins with a patio right outside the back door, perfect for outdoor dining or relaxing in the sunshine. There's outside sockets which are great for outside lighting our decorations. A spacious lawned area expands the rest of the garden and around the edges of this lush, green lawn, dedicated planting areas offer a chance for the green fingered to get to work on tending the flowers and shrubs.







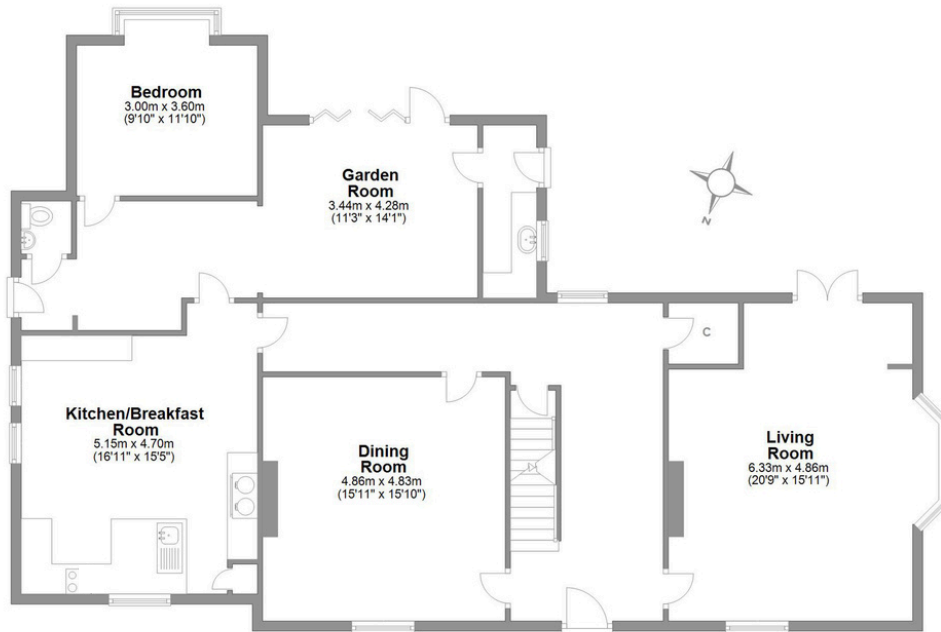
**Cellar**  
6.33m x 2.99m  
(20'9" x 9'10")

**Cellar**

Approx. 18.9 sq. metres (203.9 sq. feet)

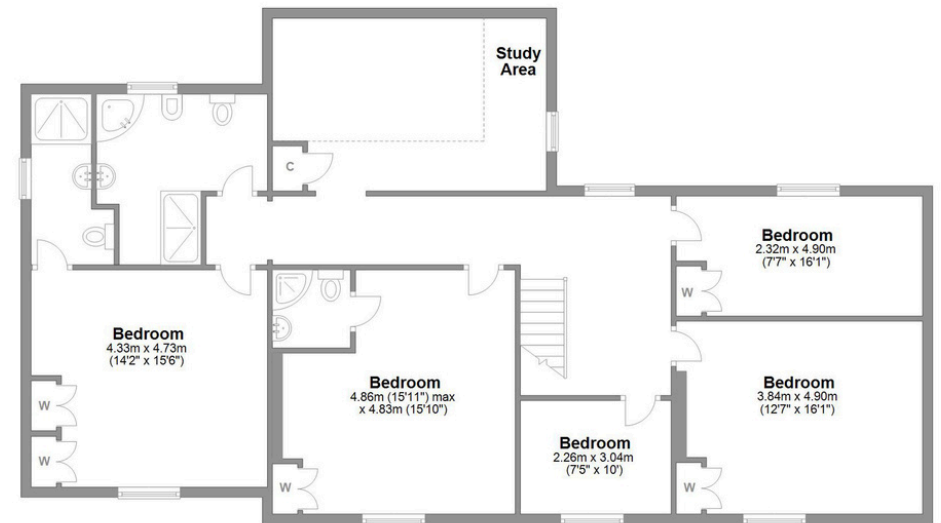
## Beckside Catterick Village

Total area: approx. 309.2 sq. metres (3328.7 sq. feet)



**Ground Floor**

Approx. 150.8 sq. metres (1623.4 sq. feet)



**First Floor**

Approx. 139.5 sq. metres (1501.4 sq. feet)

# LOVE PROPERTY.

Whilst every attempt has been made to ensure the accuracy of the floorplans contained here, measurements of doors, windows, rooms and any other items are approximate and no responsibility is taken for any error, omission or mis-statement. This plan is not drawn to scale and is for illustrative purposes only & should be used as such by any prospective purchaser. Created especially for Love Property by Vue3sixty Ltd