

COLBURN LANE

CATTERICK GARRISON

LOVE PROPERTY. 

LOVE THE JOURNEY



Colburn Lane, Catterick Garrison

An ideal home for families, retirees, or those seeking a quiet lifestyle within walking distance of essential amenities. Located in the Colburn area, the bungalow is within easy walking distance to local shops, bus routes, and schools, offering the perfect balance of peaceful living with access to everyday conveniences.





Welcome home...

As you step inside, you're welcomed by a spacious and beautifully appointed home, the porch is ideal for getting out of the rain and hanging your coats before you head inside.

The living room is warm and inviting, featuring a wood-burning stove, creating a cosy atmosphere for those colder evenings. With its inviting décor and comfy space, it's the perfect spot to relax and unwind.

The kitchen diner, the heart of the home. With plenty of natural light, this large space is perfect for both everyday living and entertaining. The modern kitchen is fully fitted with lots of places for storage and worktop space, complimented by space for a dining table that easily accommodates family gatherings or dinner parties.

You reach the conservatory through the kitchen and this is the ideal place to relax with a book in hand and enjoy the view over the back garden.





Time for bed...

All three bedrooms are double bedrooms, offering plenty of space and flexibility for family or guests. Each room is tastefully decorated and ready to move into, with large windows providing natural light and views of the surrounding greenery.



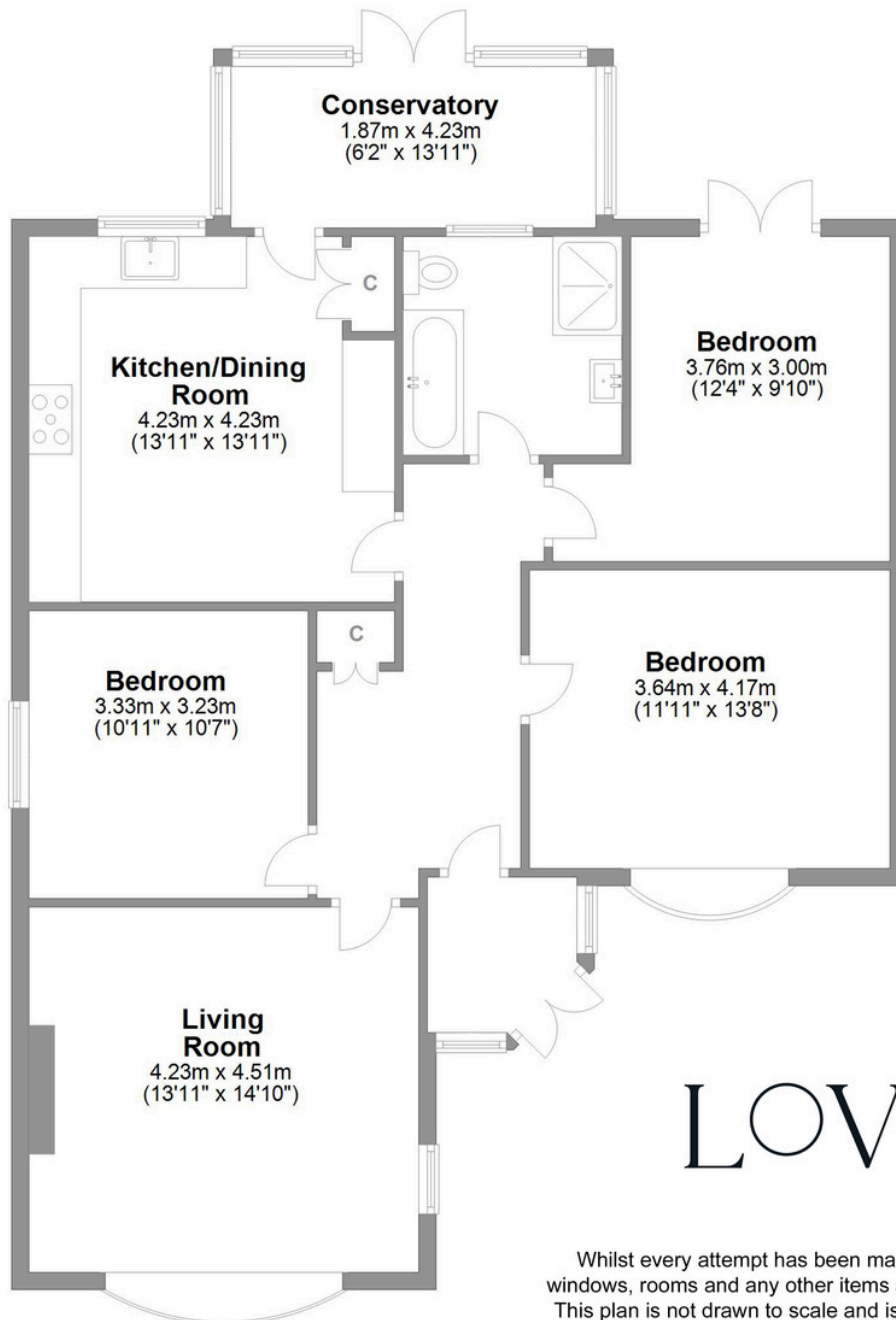
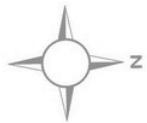
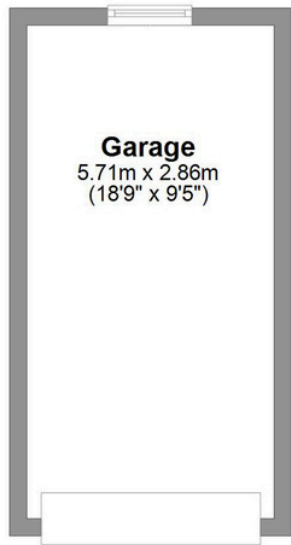




Step outside...

Outside, the bungalow is set well back from the road, offering both privacy and an attractive curb appeal. The property benefits from a gravel driveway with ample parking for 3-4 cars, alongside a garage for additional storage. The front garden is low-maintenance as is the rear garden, backing onto farmland, is a true highlight of the property, offering a peaceful space to relax or entertain while enjoying the peace and quiet.





Colburn Lane Colburn

Total area: approx. 123.2 sq. metres (1325.6 sq. feet)

LOVE PROPERTY.

Whilst every attempt has been made to ensure the accuracy of the floorplans contained here, measurements of doors, windows, rooms and any other items are approximate and no responsibility is taken for any error, omission or mis-statement. This plan is not drawn to scale and is for illustrative purposes only & should be used as such by any prospective purchaser.

Created especially for Love Property by Vue3sixty Ltd