

# NEVILLE WALK

RICHMOND

LOVE PROPERTY. 

LOVE THE JOURNEY



# Neville Walk, Richmond

The perfect home for a growing family, you're within walking distance of all the local primary and secondary schools and there's shops close by too. Fancy a meal out on an evening? Head into the cobbled town centre of Richmond where there's loads of choice for everyone. You can spend summer days at the river or enjoying castle walks before grabbing an ice cream to enjoy on your walk home.



# Family Living

Arrive home and pull onto your driveway in front of the garage, your low maintenance front garden greets you. Why not pot up some flowers in the spring to give the front of the house a burst of colour, maybe to match your blue front door!

Once inside throw your keys in the bowl to the side and kick off shoes, the herringbone flooring leads you into each room from here. Your front room is found to the left and upon arrival in here you're greeted by a beautiful brick fireplace with a log burning stove, perfect for cosy family nights in, wrapped up in a blanket watching your favourite series!

Back into the hallway and towards the kitchen, on the way take a peek into your under the stairs WC, the ideal extra spot for hanging extra coats up out of sight.

Into your kitchen now and it's time for a brew, flick the kettle on and take a seat. The neutral kitchen cupboards can store away all of your pots, pans and ingredients so you can enjoy getting messy with some Sunday morning baking before heading out for some well deserved Sunday lunch.

Your dining room is to the other side of the kitchen and can be enjoyed at tea time, with the whole family gathered around catching up on each others days and enjoying the food. It's the perfect spot to host guests too, great for a catch up over a bottle of wine and some tapas!





## When bedtime calls

Once the evening draws in, take yourself upstairs where you'll find your three bedrooms and family bathroom. Your main bedroom overlooks the back garden and has ample room for your king-sized bed, side tables, dresser and wardrobes. Whether you have bright pink bedding or white, it will fit in perfectly here with the white walls and grey carpets.

Your second and third bedrooms are great for the rest of the family, you have one double and a single both looking out to the front of the house. If you need some extra space, a small staircase takes you up to the attic room where you can keep bits and bobs stored away, or double it up as a home office!

Your four piece suite bathroom is a new stylish addition to your home. The freestanding bath awaits, with brushed black taps and a matching towel radiator, you can soak in style here. Your shower also has a clever feature where you can turn it on remotely, so once you're out of bed you can jump straight into an already hot shower!







## Step Outside

When you fancy a breath of fresh air, head to your garden which is low maintenance with patio on both levels. Set out your furnishings here and get ready for a gathering in the summer, the BBQ on and ice cold drinks to hand. If you need extra table space, open the patio doors into your large dining room where you can set the buffet up on the table!

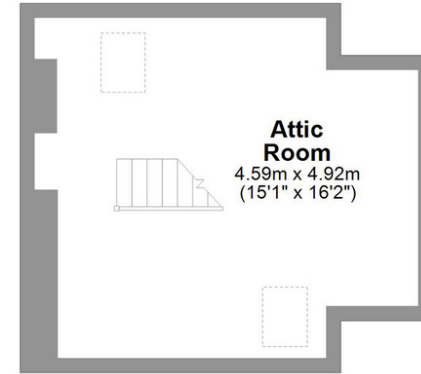


## Finer details

Postcode: DL10 5AG  
Freehold  
Council Tax Band: C  
EPC Rating: TBC  
Gas Central Heating

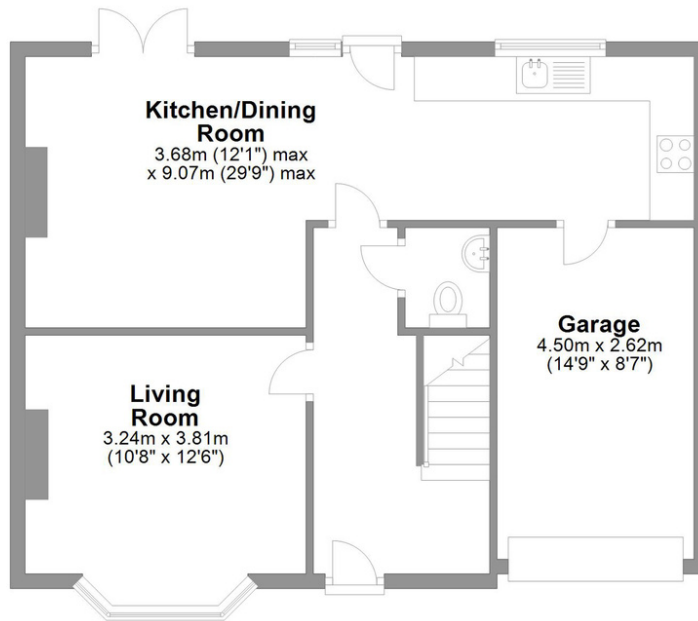
# Neville Walk Richmond

Total area: approx. 128.0 sq. metres (1377.2 sq. feet)



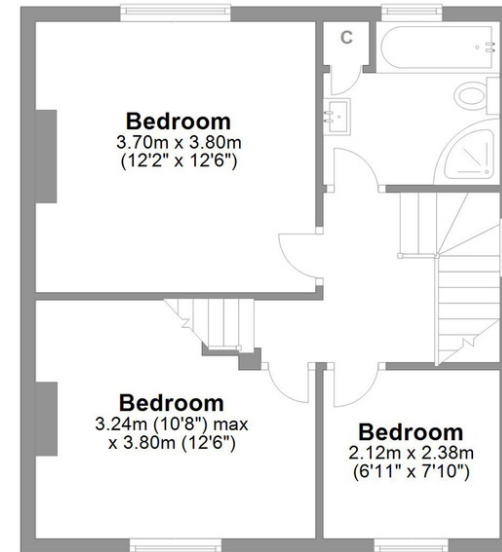
## Second Floor

Approx. 21.2 sq. metres (228.4 sq. feet)



## Ground Floor

Approx. 62.7 sq. metres (674.8 sq. feet)



## First Floor

Approx. 44.0 sq. metres (474.1 sq. feet)

# LOVE PROPERTY

Whilst every attempt has been made to ensure the accuracy of the floorplans contained here, measurements of doors, windows, rooms and any other items are approximate and no responsibility is taken for any error, omission or mis-statement. This plan is not drawn to scale and is for illustrative purposes only & should be used as such by any prospective purchaser. Created especially for Love Property by Vue3sixty Ltd