

TEMPLE TERRACE

RICHMOND

LOVE PROPERTY. 

LOVE THE JOURNEY



Temple Terrace, Richmond

Found in the centre of the cobbled Georgian market town of Richmond, Temple Terrace awaits. Here you are a short walk from the local shops, eateries, parks and more making life that little bit more convenient for you. You have picturesque walks in every direction, will it be a stroll along the river, castle walk or towards Easby Abbey, your options are endless. You have local buses running from the town and with only a short drive to join the A1 or A66, you can be on the road to wherever you need to be in a jiffy.

Welcome to a world of contemporary elegance and comfort! This home boasts a strikingly stylish hallway that sets the tone for the modern luxury that awaits beyond its doors.





Seamless design...

Prepare to be amazed by the modern kitchen/diner that seamlessly extends from the hallway. A true culinary haven, this space is a perfect fusion of aesthetics and functionality. The grey cabinetry, spacious countertops and fully integral kitchen inspires culinary creativity each day. Imagine the delightful aroma of freshly prepared meals mingling with the cosy ambiance of the kitchen. Whether it's a hearty breakfast, or a casual lunch, every moment spent at the dining table is enjoyed.

Adjacent to the kitchen, the expansive living area beckons you to gather with friends and family for memorable times. Large windows flood the space with natural light, perfect for tucking up and reading your favourite book. The huge, bespoke built-in bookshelf is an amazing place for an avid reader to keep all of their literary pieces tucked tidily away. The focal point of this trendy living space is a captivating log burning stove, nestled within a surrounding brick fireplace, ideal when the colder nights draw in to drive some extra heat into the home.

The proximity of the downstairs WC to the main living areas makes it incredibly convenient for both residents and guests. No need to venture far when nature calls – this WC is just a few steps away, ensuring quick and hassle-free access.



THIS IS
WHERE
THE
MAGIC
HAPPENS



Bedroom Tranquillity

Time to head upstairs past the large window which allows light to pour in painting a picturesque canvas of warmth and vitality as you ascend upstairs. On the landing you're met with the three bedrooms which you have your pick of.

Each of the three bedrooms is a sanctuary of style and comfort, thoughtfully designed to harmonize with your lifestyle. Whether you envision a cosy reading nook, an artistic enclave, or a home office space, these versatile rooms allow you to create your own refuge to end each day in.

Your bathroom is a haven of rejuvenation, where you can choose between a leisurely soak or a brisk shower. The separate roll-top bath adds an exquisite touch of luxury, while the shower revitalises and refreshes.





A World Above

Head up a further steep staircase to reveal a loft space that extends a warm welcome to your imagination. This room could be transformed into a home office, a further bedroom or a place to work on projects, a peaceful space located close to the heart of the home yet separate enough to offer privacy and tranquillity.





A Haven in All Seasons

Step into a world of outdoor indulgence and relaxation where you can spend many sunny afternoons. This private courtyard is a place where you can enjoy every part of outdoor living. Imagine a space designed to perfection, featuring a cosy seating area where you can sip your morning coffee or bask in the golden afternoon sun. Whether there's a sudden rain shower or the sun's rays are proving a bit too intense, your gazebo serves as a shield against the elements. Enjoy al fresco dining, intimate gatherings, or peaceful moments of solitude, all while being sheltered in an atmosphere that remains in tune with nature.

The adaptable outhouse offers endless opportunities for transformation. Use it as a sophisticated home office or a stylish dressing room, ideal if you decide to place a hot tub out here for yourself or guests alike to get changed in.



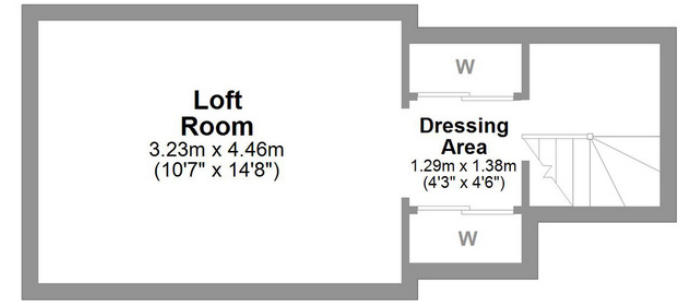


Finer details

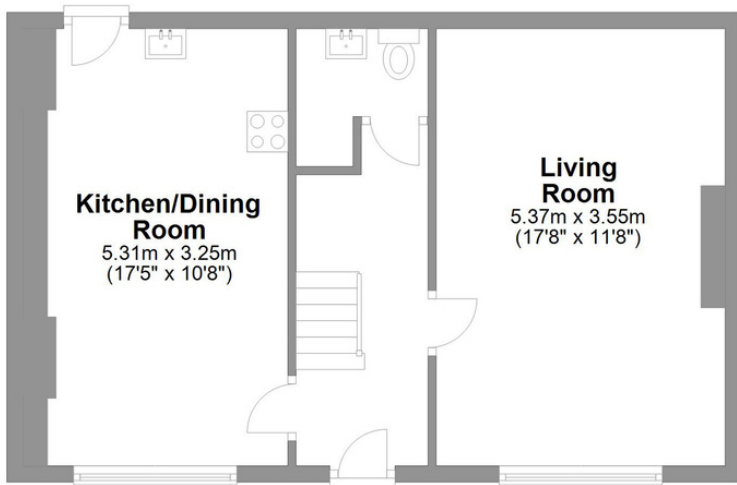
Postcode: DL10 4EE
Freehold
Council tax band: D
EPC rating: E
Gas central heating

Temple Terrace Richmond

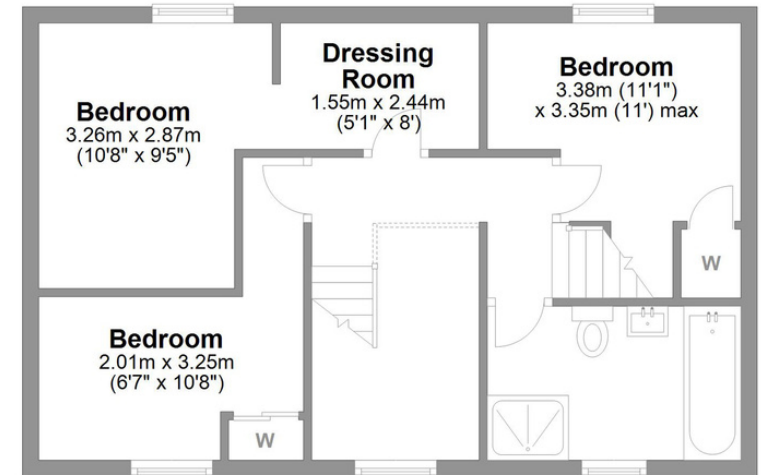
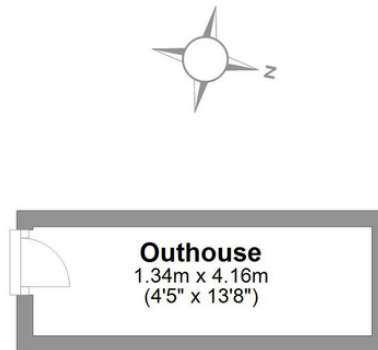
Total area: approx. 118.9 sq. metres (1279.6 sq. feet)



Second Floor
Approx. 21.8 sq. metres (234.1 sq. feet)



Ground Floor
Approx. 51.2 sq. metres (550.9 sq. feet)



First Floor
Approx. 46.0 sq. metres (494.6 sq. feet)

LOVE PROPERTY

Whilst every attempt has been made to ensure the accuracy of the floorplans contained here, measurements of doors, windows, rooms and any other items are approximate and no responsibility is taken for any error, omission or mis-statement. This plan is not drawn to scale and is for illustrative purposes only & should be used as such by any prospective purchaser. Created especially for Love Property by Vue3sixty Ltd