

ABBEY VIEW

RICHMOND

LOVE PROPERTY. 

LOVE THE JOURNEY



Dundas Street, Richmond

This two-story apartment, offers the charm and space of a house with the convenience of apartment living. Located in the centre of Richmond just moments from the cobbled Georgian market town, where you'll find shops and eateries galore, as well as plenty of beautiful scenic walks by the famous Richmond Castle and down by the river.



Welcome home...

As you enter this apartment, you're greeted by a cosy, welcoming entrance hallway. This initial space is efficiently utilised with a built-in cupboard that is perfect for storing outerwear and shoes, keeping the area tidy and clutter-free.

Through into the main hallway now, where you'll find a conveniently located WC, ideal for guests and everyday use. There is also additional cupboard space, which is invaluable for household items to be stored away in.

At the end of the hallway you'll find the living room, a spacious area designed for relaxation. The room is anchored by a log burning stove, which provides warmth and ambiance during the colder months. The layout accommodates two large couches, offering plenty of seating for family and friends. One of the highlights of the living room is the balcony which extends the living space outdoors, perfect for morning coffees or evening drinks.







Time to eat!

When it's time for dinner head toward your kitchen where you will find ample worktop space for preparing hearty meals! The neutral design and two windows keep this space light and airy, ideal when you're cooking up dinner on an evening. A large stove stands in its own little inlet, waiting to cook Sunday roasts for all the household to enjoy.

Your large dining room comes next, a place for all your family and friends to gather and enjoy meal time. In here you'll easily fit an eight-seater table, so hosting gatherings should be a breeze and you have doors that open onto a balcony, brilliant in the summer months! There's ample space for another seating area in here, so once dinners finished you can sit back and enjoy a tittle.



Evening draws in...

When it's time for bed head upstairs where you'll find three double, en-suite bedrooms all branching from the hallway. Your first bedroom room is designed to offer both comfort and convenience, with plenty of space for your double bed, side tables and wardrobes, whilst also featuring an en suite bathroom equipped with a bath and an overhead shower.

The second bedroom ensures ample space for a double bed, side tables, and wardrobes, effectively maximising all available space in the room. Similar to the first, it also features an en suite shower room with a walk-in shower.

The third bedroom, the smallest of the three is also a handy double room. Again offering en suite facilities with a bath and overhead shower.





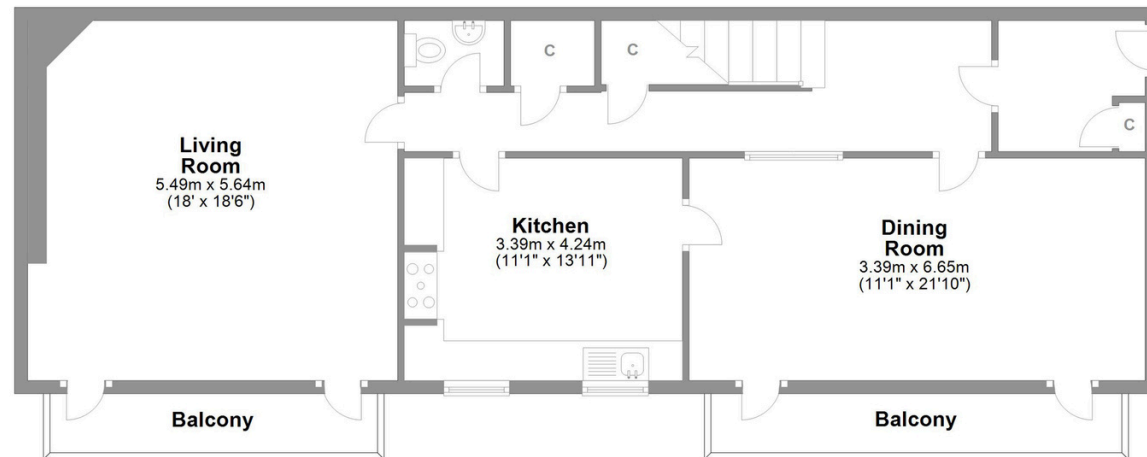
Abbey View Richmond

Total area: approx. 187.8 sq. metres (2021.6 sq. feet)



First Floor

Approx. 94.6 sq. metres (1018.0 sq. feet)



Ground Floor

Approx. 93.2 sq. metres (1003.6 sq. feet)

LOVE PROPERTY.

Whilst every attempt has been made to ensure the accuracy of the floorplans contained here, measurements of doors, windows, rooms and any other items are approximate and no responsibility is taken for any error, omission or mis-statement. This plan is not drawn to scale and is for illustrative purposes only & should be used as such by any prospective purchaser. Created especially for Love Property by Vue3sixty Ltd