

WARWICK CLOSE

CATTERICK GARRISON

LOVE PROPERTY. 

LOVE THE JOURNEY



Warwick Close

This three bedroom, mid- terrace house is found on the Leadmills estate in Catterick Garrison, where you're close by to local shops, schools and more.

With allocated parking you can rest assure that there's always a place to park up your vehicle on an evening. Once inside the house find a useful WC to the right and plenty of storage space in front were coats, shoes and more can be stored away.

Find the living room to the right of the house where there's space for your large corner sofa. In here you have windows out to the front and back of the house allowing natural light to flow through giving the room an airy feel.

Your kitchen/diner is to the left of the house and in here you have ample space to rustle up a storm on an evening, then sit down around the dining table to delve into your meal.





Explore Further

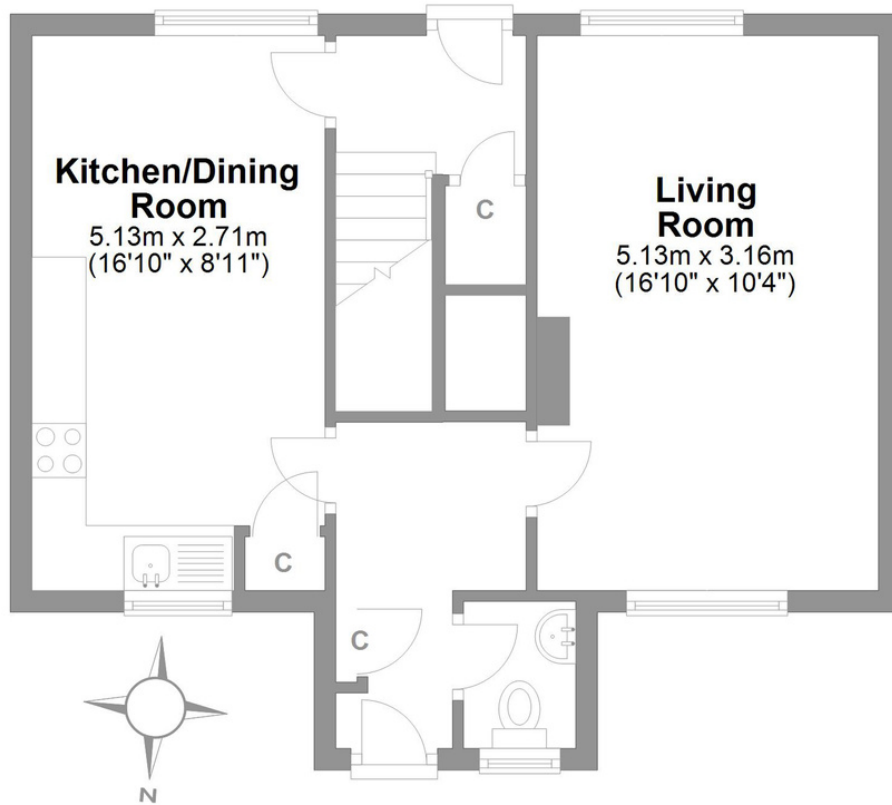
Upstairs there's three good sized bedrooms, two doubled with built in wardrobes and a third larger single, again with a built in wardrobe. On the landing find further storage space for all of your bits and bobs, saving you going up to the loft every time you need a suitcase out.

The bathroom completes this floor, and in here there's a built in bath with an overhead shower, so you can enjoy the best of both worlds.

Your back garden is a haven of possibility, with a lawn area for pets or children to play on and space to place your outdoor furnishings, it's the ideal area to catch the sunshine on lovely summer days.

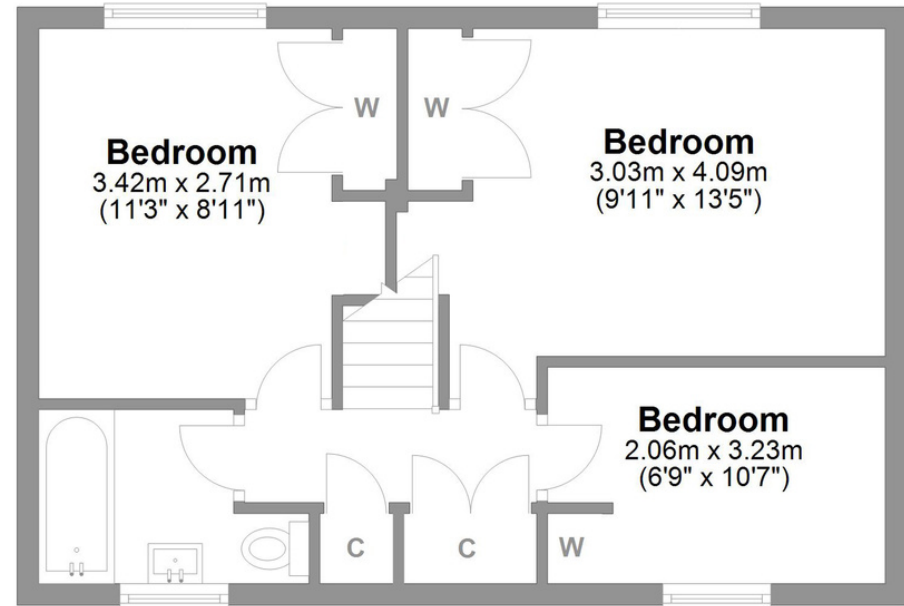
Warwick Close Catterick Garrison

Total area: approx. 84.3 sq. metres (907.0 sq. feet)



Ground Floor

Approx. 43.4 sq. metres (467.2 sq. feet)



First Floor

Approx. 40.9 sq. metres (439.8 sq. feet)

LOVE PROPERTY.♥

Whilst every attempt has been made to ensure the accuracy of the floorplans contained here, measurements of doors, windows, rooms and any other items are approximate and no responsibility is taken for any error, omission or mis-statement. This plan is not drawn to scale and is for illustrative purposes only & should be used as such by any prospective purchaser.

Created especially for Love Property by Vue3sixty Ltd