



MARSKE HALL
APARTMENTS



Welcome to Marske Hall Country Estate

With a rich history dating back almost 600 years, this home has previously only known two families as its owners, a testament to its enduring allure. Marske Hall is truly a remarkable place, effortlessly capturing your heart.

The Marske estate was bought in 1596 by Matthew Hutton, then known as the Archbishop of York, whose son Timothy started work on the hall in the late 16th or early 17th centuries. The house was remodelled & extended in about 1748, with later alterations, and remained in the same family for over 400 years.





Property

Marske Hall, nestled in the picturesque landscape of North Yorkshire, has undergone a remarkable transformation, evolving into ten individual apartments that seamlessly blend the history of the property with today's modern comforts.

This historic residence, with its roots tracing back through centuries, exudes an air of timeless elegance. The original architecture, characterised by classical lines and intricate detailing, serves as a reminder of the hall's past inhabitants. As you explore the corridors and rooms, you can almost envision the lives of those who once called Marske Hall their home.

The restoration and renovation of individual residential apartments in the main hall has been executed with thorough care, preserving the history of the hall while introducing contemporary elements for a luxurious and comfortable living experience.

Each apartment retains unique features, such as ornate fireplaces, high ceilings, and expansive windows that showcase breathtaking views of the surrounding estate.

Development

This development was motivated by a desire to breathe new life into this historical gem and witness it become a cherished residence once more.

This ambitious project spanned four years, characterised by meticulous care and artistic craftsmanship, transforming Marske Hall into a beacon of history for new residents to savour.

The precision of the restoration work is so exact that distinguishing the original elements from the added touches becomes a delightful challenge. The incredible skill of the craftsmen involved in this project is evident in every detail, no matter how minute, ensuring an unparalleled level of quality throughout.







The Apartments

The blending of old and new is evident in the thoughtful integration of modern amenities. Fully integrated kitchens and stylish bathrooms seamlessly coexist with period details, so residents can enjoy the best of both worlds.

The grounds surrounding Marske Hall are as enchanting as the interior. Expansive gardens, manicured lawns, and centuries-old trees provide a tranquil setting for residents to relax and unwind.

Living at Marske Hall is not just about residing within its walls; it's about becoming a part of its ongoing legacy. The hall, once a symbol of a privileged few, now welcomes a diverse and dynamic group of individuals who appreciate the rare blend of old-world charm and contemporary luxury.



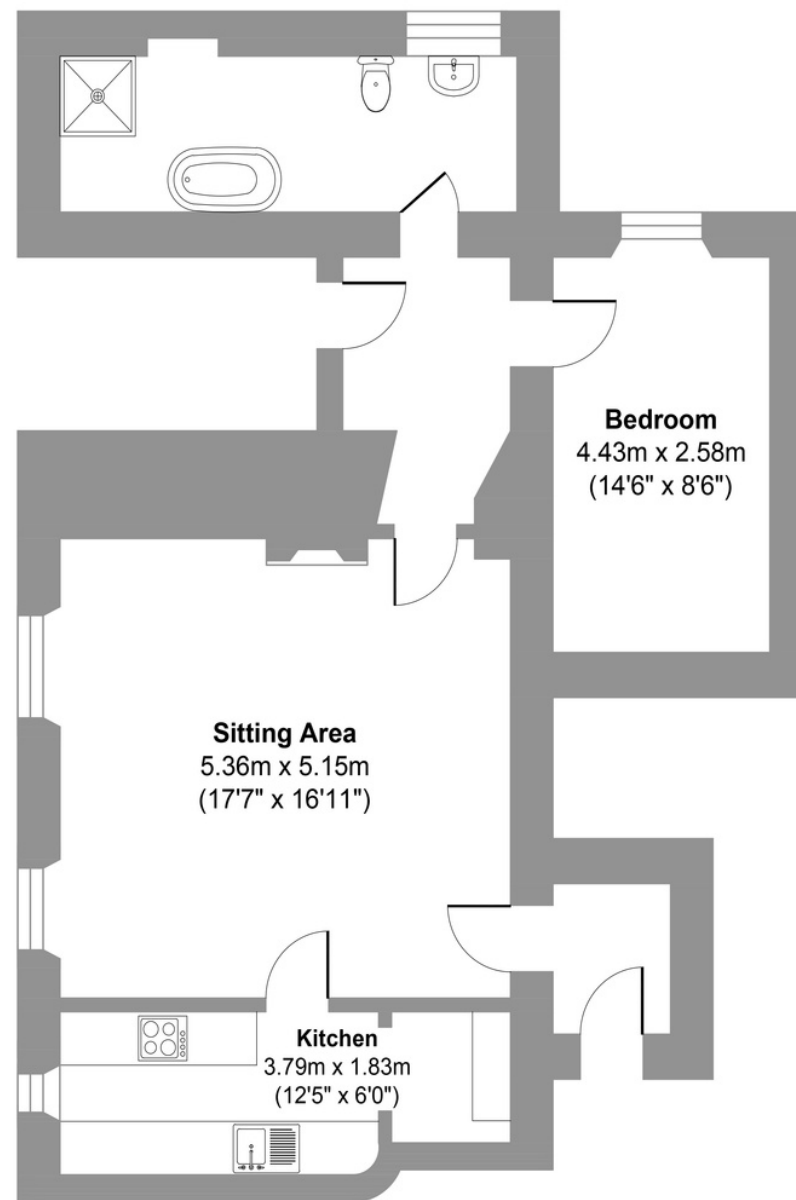
Victorian Rooms



The Victorian rooms, where every room captures a snapshot of a bygone era when the Victorian style was the height of style.

Detailed crown moulding adorns every corner, ceilings are subtly lowered to embrace the essence of the period, and a Victorian-style fireplace takes center stage, freezing a moment in time that reflects the enduring charm and sophistication of the Victorian age.

Located on the upper ground floor with windows facing the south and west elevations and allocated parking.



Approx. 68.0 sq. meters (731.9 sq. feet)



The Library



2



1



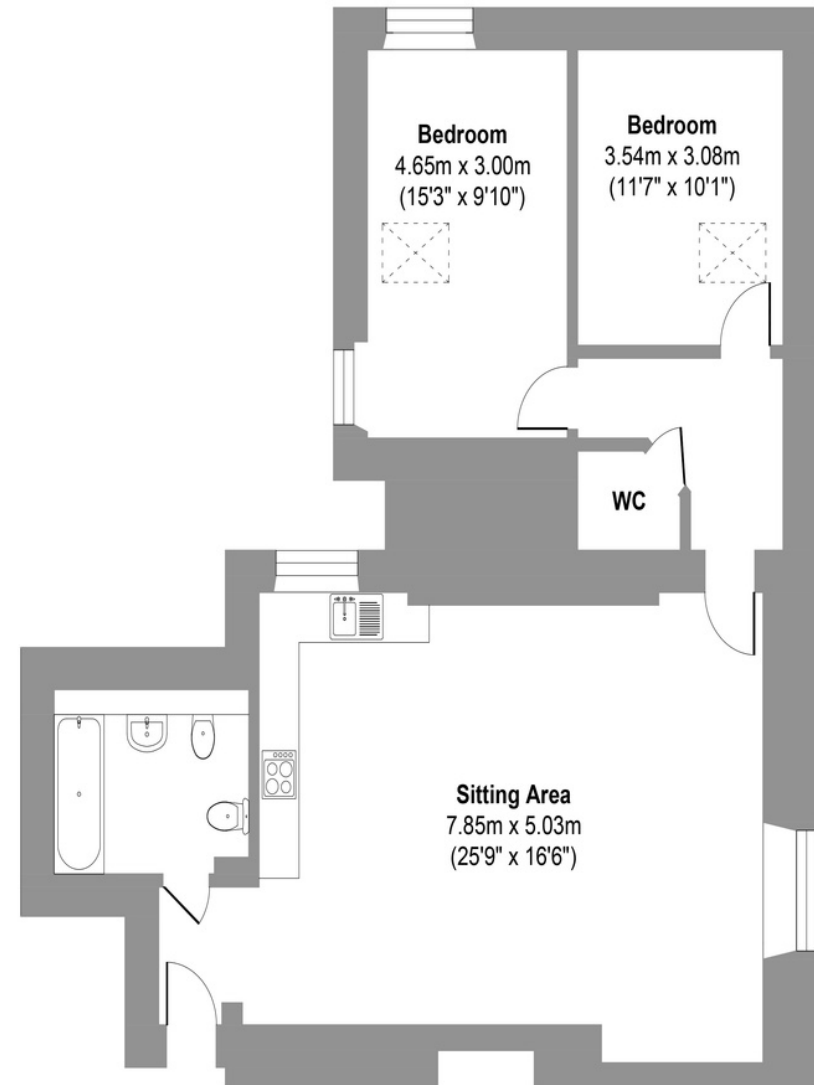
1



980 sqft

Etched into the wall like a silent storyteller, a remnant of graffiti dating back to 1844 stands as a captivating relic in this space. The weathered strokes of ink or paint tell a tale of bygone days, offering a glimpse into the thoughts and expressions of individuals from another era.

Located on the upper ground floor this two bedroom apartment looks out to the North and West elevations and has allocated parking.



Approx. 91.1 sq. meters (980.5 sq. feet)



Chapel Suite



2



1



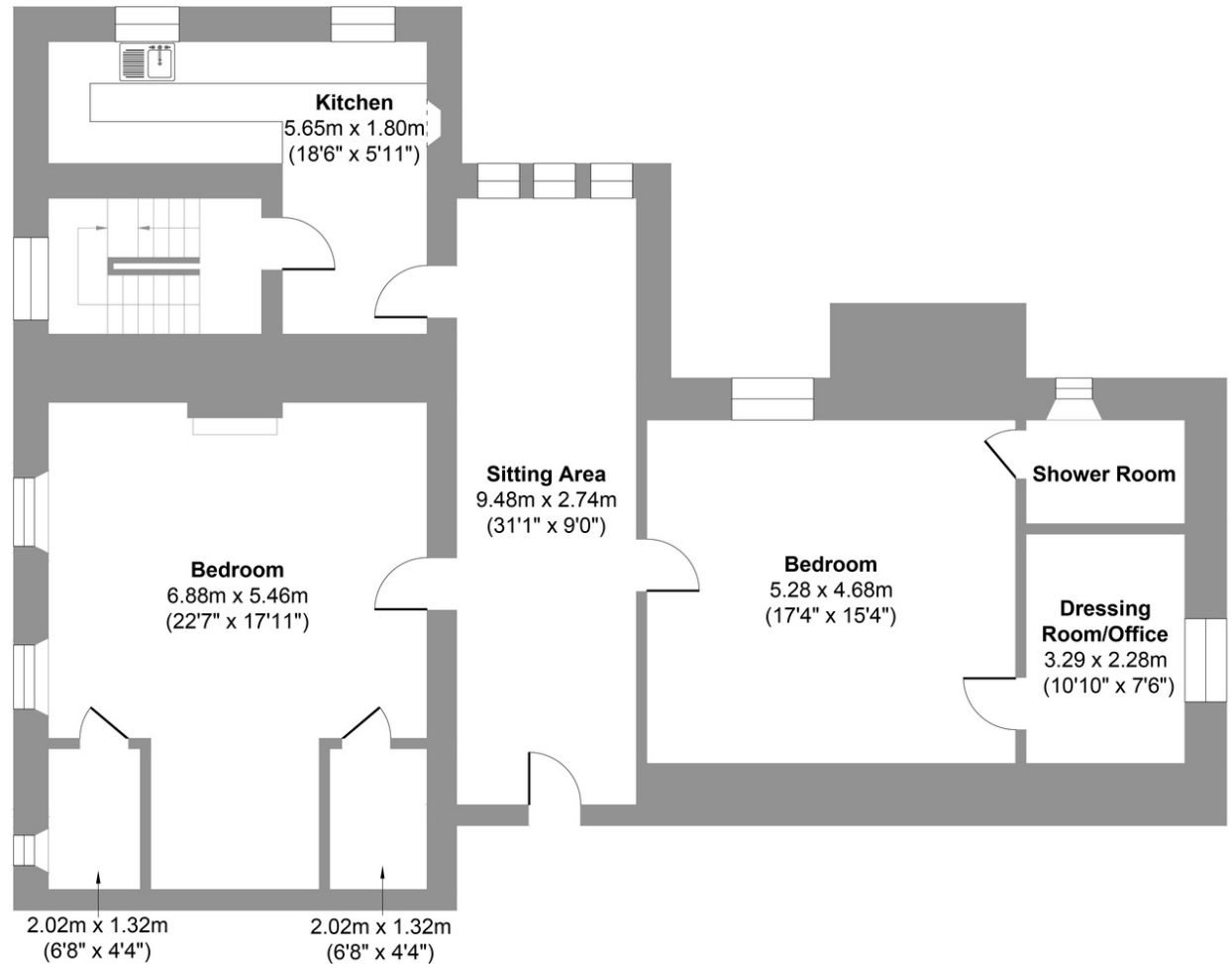
1



1411 sqft

The Chapel Suite, echoing the rich history of the estate, holds a distinct significance as it was originally owned by an archbishop. This residence has a strong connection to history, having been in the possession of a family with two archbishops in its lineage. The Suite beautifully reflects the historical legacy of the property and its enduring ties to esteemed figures in the ecclesiastical realm.

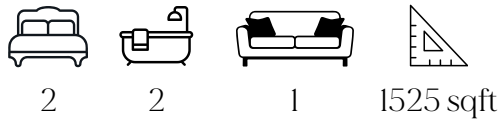
Located on the first floor with windows facing south and west and has allocated parking.



Approx. 131.1 sq. meters (1411.1 sq. feet)

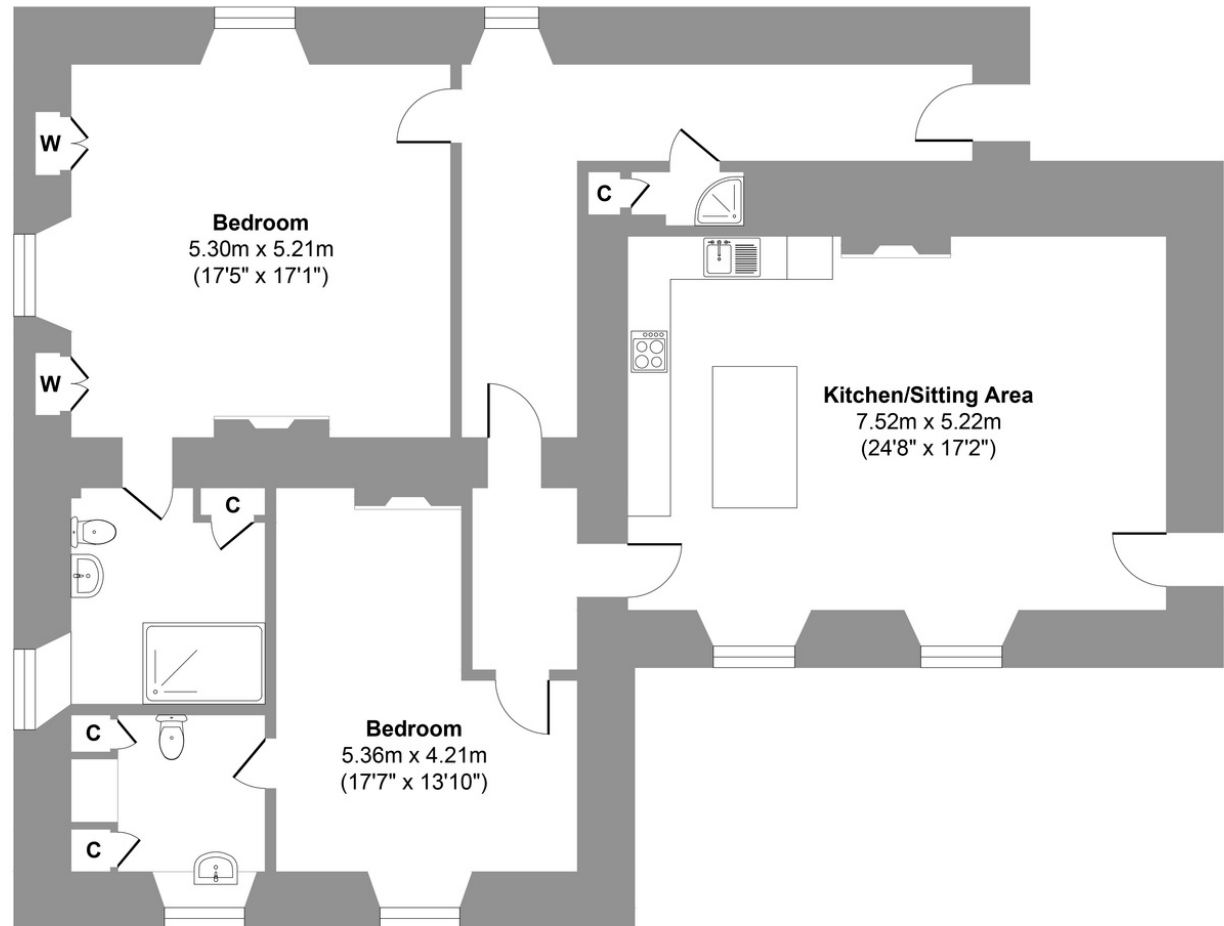


Hutton Suite



The Hutton Suite, named after the Hutton family who's ownership of this estate spanned more than 400 years, contributing to its rich history and heritage. This apartment stands as a captivating showcase of elegance and heritage.

Located on the first floor with windows facing south, west and east and has allocated parking.



Approx. 141.7 sq. meters (1525.2 sq. feet)



Shaw Suite



1



1



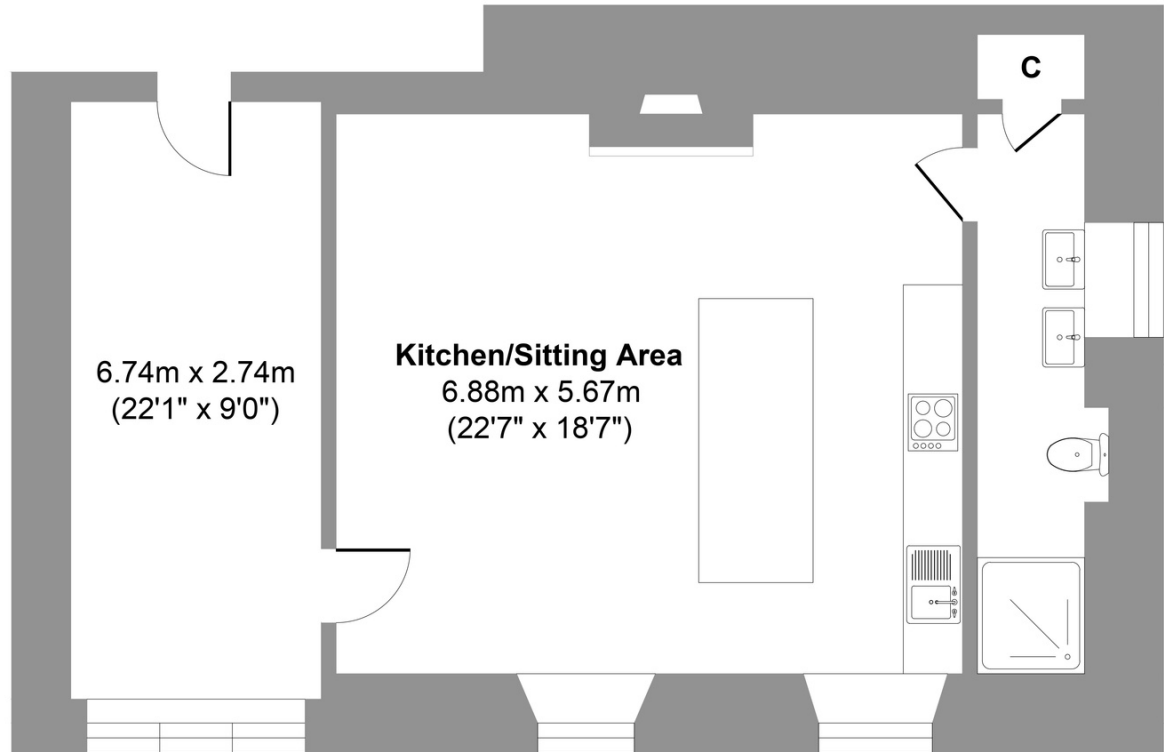
1



673 sqft

The Shaw Suite, a heartfelt homage to the estate's second-ever owner and guardian, was tenderly acquired in the 1960s, sparing it from impending demolition. It stands as a poignant tribute to a family that not only rescued the property but also lovingly converted it into apartments, providing homes for local residents.

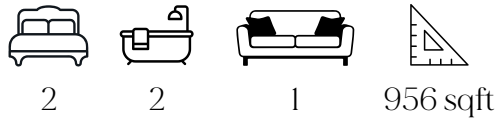
Located on the first floor with windows facing east and north and has allocated parking.



Approx. 62.6 sq. meters (673.8 sq. feet)



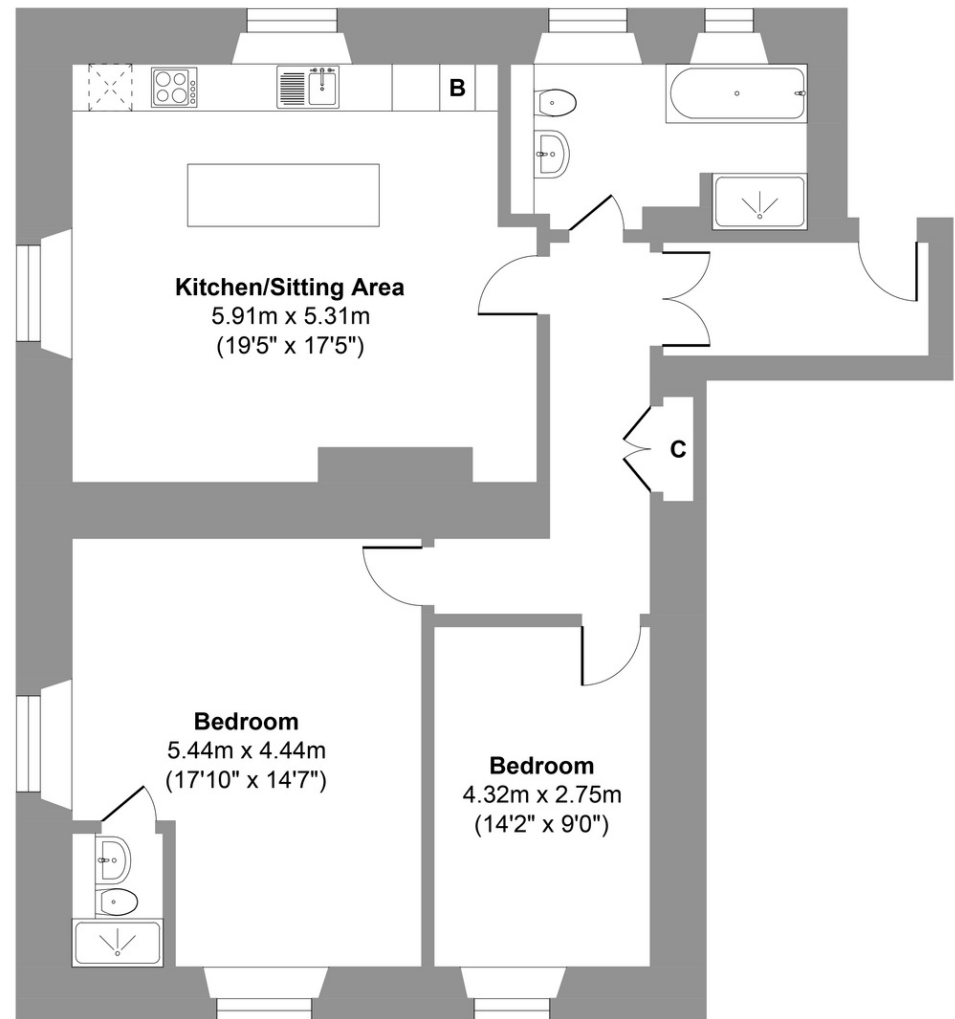
Scarborough Suite



The Scarborough Suite beautifully reflects a touching episode in the rich history of Marske Hall.

Amidst the uncertainties of the Second World War, the enchanting surroundings of the hall must have offered a comforting and beautiful refuge for Scarborough Girls School until they could safely return home.

Located on the second floor with windows facing south, west and east and allocated parking.



Approx. 88.9 sq. meters (956.9 sq. feet)



Richmond Suite



3



2



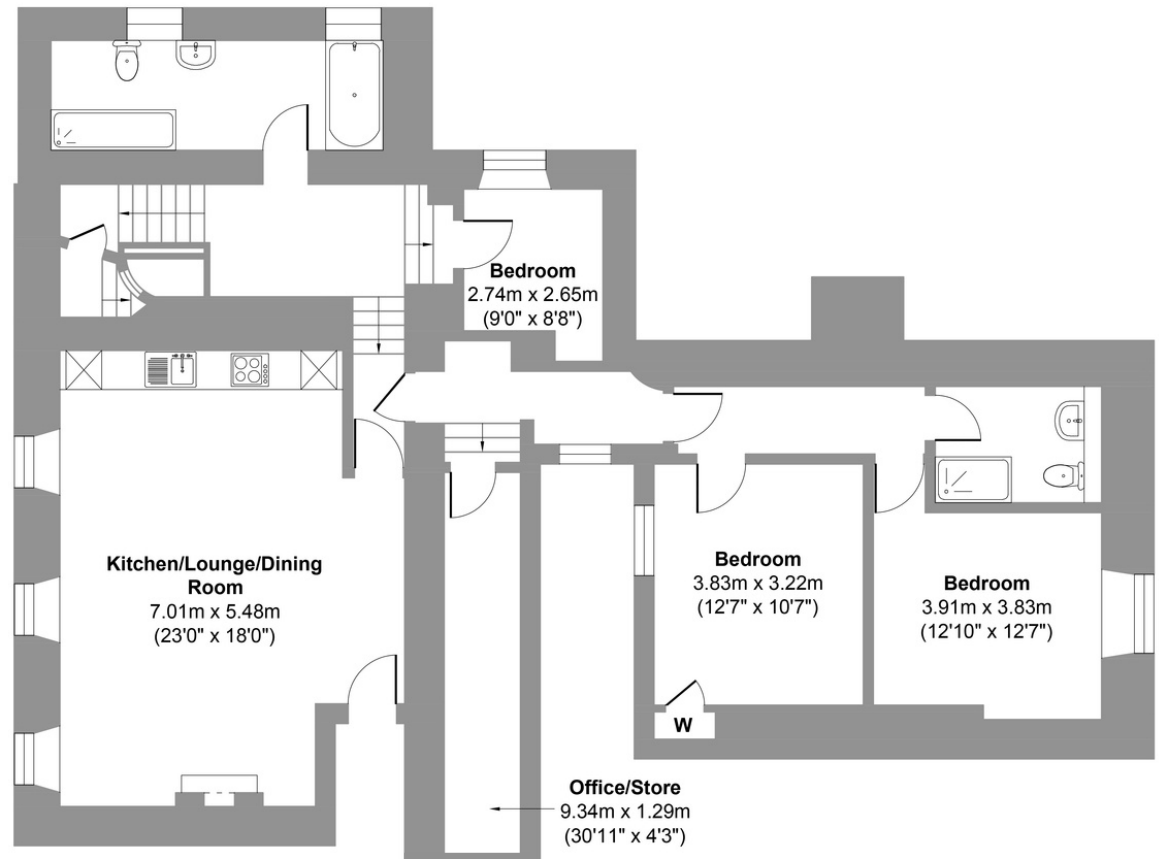
1



1345 sqft

The Richmond Suite holds a deeply sentimental place in the heart and history of Marske Hall estate. Under Timothy Hutton's ownership, he extended compassion by welcoming two adolescent individuals, Richmond and Yorke, facing forced servitude, into his family. This poignant connection played a pivotal role in fostering compassion and contributing to the movement for the abolition of enslavement in the country.

Located on the second floor with windows facing south, west and north and allocated parking.



Approx. 125.0 sq. meters (1345.4 sq. feet)



Yorke Suite



4

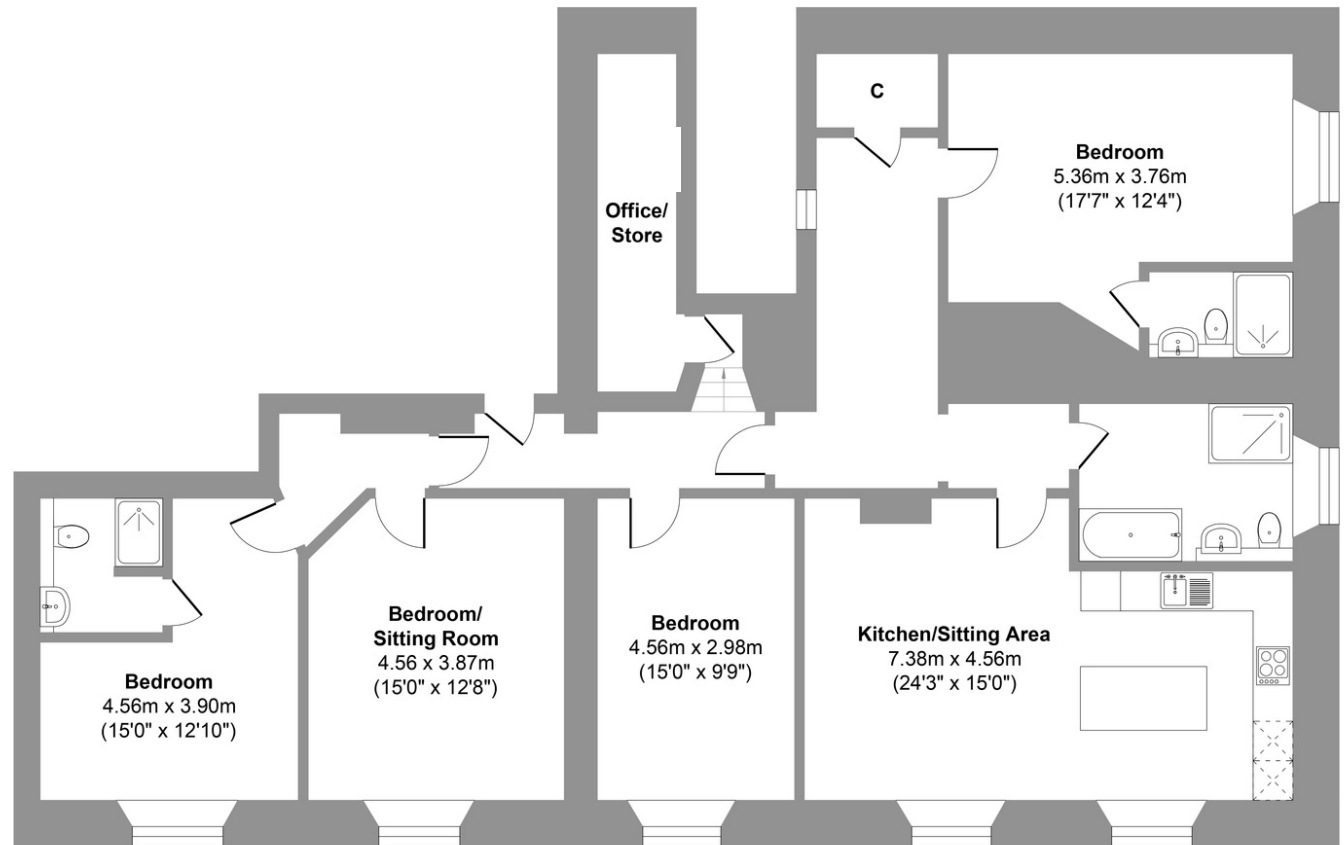
3

1

1665 sqft

The Yorke Suite, the largest apartment, holds a deeply sentimental place in the heart and history of Marske Hall estate. Under Timothy Hutton's ownership, he extended compassion by welcoming two adolescent individuals, Richmond and Yorke, facing forced servitude, into his family. This poignant connection played a pivotal role in fostering compassion and contributing to the movement for the abolition of enslavement in the country.

Located on the second floor with windows facing east and north and allocated parking.



Approx. 154.7 sq. meters (1665.1 sq. feet)





Finer details


- 10 Year Q Build Warranty
- Fully Insulated to enhance thermal and acoustic performance
- Windows fitted with double glazed conservation glass
- Shutters and windows fully restored
- Newly Installed Frame Style Kitchen with Quartz Work Surfaces
- Dishwasher 10 Year Guarantee
- Washer Dryer 10 Year Guarantee
- Fridge Freezer 10 Year guarantee
- Neff Sliding Door Oven 2 Year Guarantee
- Neff Induction Hob 2 Year Guarantee
- Central Heating with metered LPG Gas from central tanks
- Baxi boiler with 10 year Guarantee
- New wiring and electric supply installation with EICR certification
- Mains Water and Drainage
- Allocated Parking
- Council Tax Band - TBC
- Maintenance Fees - TBC
- 999 Year Leasehold with a Share of Freehold

Note

Internal photos are of the show apartment and not of the actual apartment.

Kitchens and bathrooms differ throughout
Guarantees will commence upon legal completion.

Buyers will need to install their own floorings.



Local Attractions

North Yorkshire Dales National Park 0.00 miles
Downholme Viewing Point 3 miles
Richmondshire Museum 5.7 miles
Green Howards Museum 5.7 miles
The Station Art and Cinema 5.7 miles
Richmond Castle 5.7 miles
Easby Abbey 6.6 miles
Foxglove Covert 8.9 miles
Middleton Lodge 10.9 miles
Forbidden Corner 12.5 miles
Aysgarth Falls 13.1 miles
Thorpe Perrow 17.6 miles
Lightwater Valley 33.5 miles



Location

- Despite its semi rural location, The Marske Hall Estate is approximately 6 miles to the west of Richmond and is ideally positioned for access to the A66 dual carriageway, which in turn links directly with the A1(M) and the national motorway network at Scotch Corner.
- Teesside Airport which provides regular domestic and international flights to a wide range of destinations.
- There is convenient access (18.4 miles) to the East Coast mainline from Darlington running 58 times a day, making London Kings Cross just over 2h 20m away.
- Richmond's soon to be completed Designer Outlet is 22 min (9.9 mi) via A6108 by car.
- Richmond Market Place is just 5.7 miles to the east and known as one of Britain's finest historic towns boasting the oldest castle in the UK; an important tourist destination and widely recognised for its excellent range of eateries and independent shops as well as some highly regarded schools.
- Northallerton market town is located 21 miles away with its very own independent department store, Betty's Tea Room and Every Man cinema
- Reeth market place is 4.7 miles away with beautiful walks across the beautiful Fremington Edge and a scattering of independent cafes and shops.



LOVE
PROPERTY

In Partnership

