

BRIDGE COTTAGE

BAINBRIDGE

LOVE PROPERTY.

LOVE THE JOURNEY



BRIDGE COTTAGE, BAINBRIDGE

In Bainbridge and the surrounding area, you can immerse yourself in the natural beauty of the Yorkshire Dales, explore the area's rich history, and enjoy the warmth of the local communities. Whether you're seeking outdoor adventures or a peaceful place to call home, this part of North Yorkshire offers something for everyone.

Passing through the village you can admire the traditional stone buildings, including the charming village green, which is surrounded by historic cottages. Pull up in front of your cottage and take it all in.



Step inside...

Inside the front door and you're into the hallway where coats can be hung up neatly. Step through into the spacious living room that offers a cosy place to throw your feet up after a day of exploring the picturesque countryside. Windows not only flood the room with natural light but also provide breathtaking views of the surrounding landscape, so you can sit back and enjoy the world going by. The centerpiece of this living room is the log-burning stove, nestled in an alcove with a rustic stone surround, perfect for colder nights where you can snuggle up in front of the flickering, warm fire.

When dinner time beckons head through to your kitchen that seamlessly merges with nature, offering breathtaking views that stretch out over the river. This culinary space is a true gem, inviting you to indulge in the art of cooking while surrounded by the beauty of the outdoors. Your kitchen also comes with a utility room, tucked away and ideal for keeping larger appliances hidden away, there's also a WC through here too.

From the kitchen, an open archway leads to the spacious dining room where dinner gatherings with family and friends can be enjoyed.





CAMBALALA
SOUTH AFRICAN
WINE
MALBEC
2018 LIMITED EDITION

A wooden cutting board is the centerpiece, featuring a loaf of baguette, several wedges of yellow cheddar cheese, a wedge of white cheese with dark spots, and a bunch of red grapes. A cheese knife with an orange handle and a small black tool are also on the board.

Time for bed...

When it's time to turn in for the night head upstairs where the inviting bedrooms can be found. There are three double bedrooms, and each one has its own unique charm. Two bedrooms overlook the front of the property and the third overlooks the back garden and the river. Waking up to the peaceful river view is like a breath of fresh air every morning. No matter which room you choose, you'll find comfort and relaxation at every turn.

As you step inside the bathroom, you'll immediately notice the stylish and practical features that make it a delightful space for relaxation and rejuvenation. In here your P-shaped bath with an overhead electric shower allows for evening soaks, perfect for relaxing after long days walking in the surrounding countryside, or quick morning showers to awaken the senses.





Breath of fresh air...

The garden is a multi-level oasis that beckons you to explore and unwind. As you step outside, you'll find yourself on the highest level of the garden, a spacious patio area. This top-tier patio offers breathtaking views of the river below. Descend the stone staircase, and you'll reach the second level of the garden. Here, shrubs and flowers line the sides, creating a burst of colour and fragrance that changes with the seasons.

Further down, the garden unfolds into a third lower patio level, just a stone's throw from the riverbank. It's a peaceful haven where you can sit on comfortable garden furniture, sipping your morning coffee or enjoying a glass of wine at sunset. The sound of the river's gentle murmurs sets the perfect backdrop for relaxation, and the close proximity to the water invites you to dip your toes in on sunny days. You also have fishing rights here, so the avid angler can enjoy making the most of this.



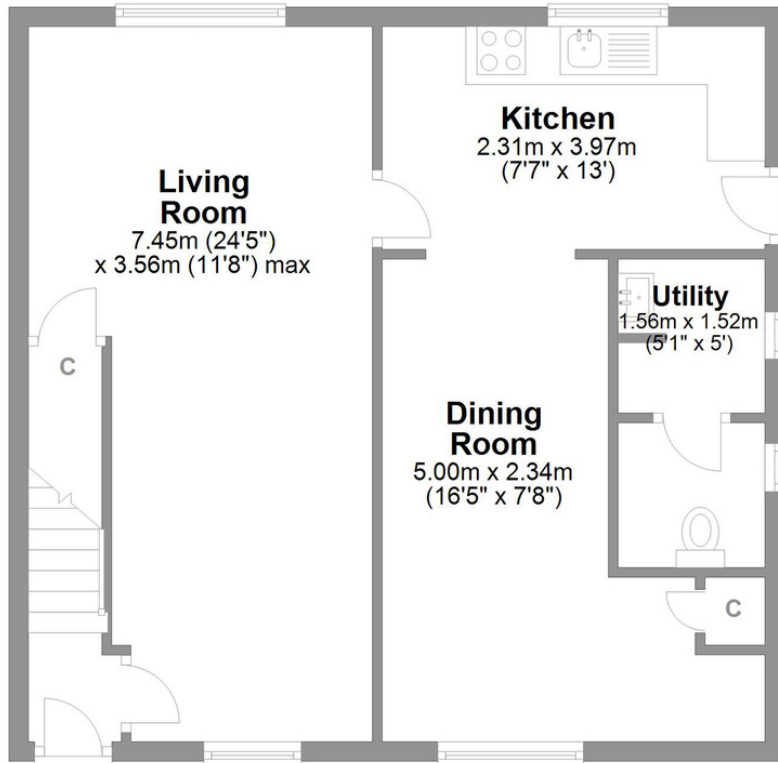


Finer details

Postcode: DL8 3EF
Council Tax Band: Exempt due to being a holiday let
(was previously D)
EPC Rating: TBC
Freehold
Oil Central Heating
Chain free

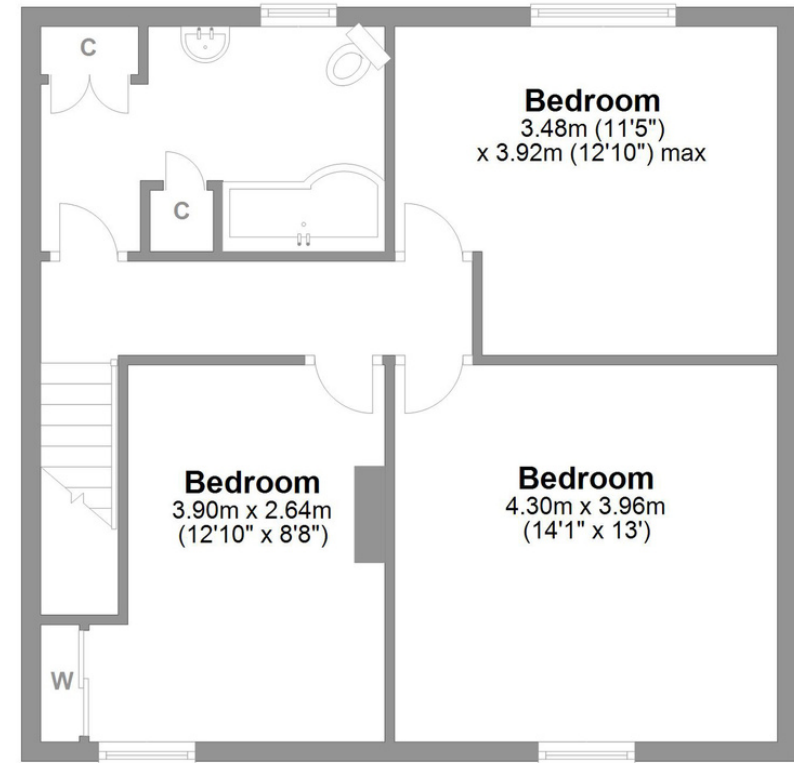
Bridge Cottage Bainbridge

Total area: approx. 113.9 sq. metres (1226.5 sq. feet)



Ground Floor

Approx. 56.5 sq. metres (608.2 sq. feet)



First Floor

Approx. 57.4 sq. metres (618.3 sq. feet)

LOVE PROPERTY

Whilst every attempt has been made to ensure the accuracy of the floorplans contained here, measurements of doors, windows, rooms and any other items are approximate and no responsibility is taken for any error, omission or mis-statement. This plan is not drawn to scale and is for illustrative purposes only & should be used as such by any prospective purchaser.

Created especially for Love Property by Vue3sixty Ltd