

MILL HOUSE

CATTERICK VILLAGE

LOVE PROPERTY. 

LOVE THE JOURNEY



# Beckside, Catterick Village

Find yourself at the heart of Catterick Village, with views over the beck where you can enjoy a summers day picnic. You're just over the road from the local pub 'The Bay Horse', where you can nip for a quick tippie or bite to eat on an evening. There's local shops, cafe's and plenty more at your doorstep, plus you have the A1 just moments away, so you can get away somewhere different on the weekends.





# Welcome home...

Driving toward your new home, past the leafy green trees and scenic village green where ducks enjoy the beck, you arrive at Becksides. Park up and head inside, past your well kept front garden where you can enjoy your morning coffee, whilst taking in the light mornings.

Step inside and kick your shoes off before heading to one of your living rooms to the left. This cosy, snug space is just what you need to wind down after a long day, get some candles lit to set the scene and wrap up whilst enjoying your favourite series.

When you're feeling peckish, head across the hallway to your fantastic open kitchen/dining/family room. Here you can cook up a storm whilst still enjoying the company of family or friends who can enjoy relaxing in front of the fire. When it's time to tuck in, gather round the table to enjoy your homecooked food.

Towards the end of the hallway you will find a utility room, where you can keep all of your large appliances and washing hidden out of sight, a handy addition to the home.

If in need of some formal living space, your well dressed and decorated reception room offers a spot to enjoy afternoon tea with friends. On warmer days, have the patio doors open to let the sounds of the birds outside and summer breezes flow through.





# Head upstairs

Heading upstairs you will find on the first floor, three bedrooms. The main bedroom is the first, as you approach find plenty of room for your large double bed and wardrobes, and wake up to views over the village green... perfect. The en suite bathroom is perfect for those who enjoy a bit more privacy on a morning, enjoy a soak in the free standing bath, or enjoy a quick morning freshen up in the shower.

Bedroom two and three on this floor are ideal for the rest of the family and both have enough space for double beds if the occupant wishes.

The main bathroom on this floor has a large corner bath with an overhead shower for ease, making the morning rush easier. You also have another WC next door, so there'll be no knocking on the bathroom door whilst you're enjoying a bath.

Head to the second floor where you will find two further bedrooms, both double in size and flooded with light from the Velux windows. These rooms are perfect for the teen of the household, or could be used as office space, a playroom, or guest rooms if not needed!





A photograph of a stone building with a covered patio area. The building has a rustic stone facade and a red-tiled roof. The patio is covered by a wooden pergola structure with three hanging planters. In the foreground, there is a grey wicker table and chairs. A green hose reel is visible on the right side of the patio. The sky is overcast.

## Step outside...

Your private, patio garden is where you can enjoy a nice G&T on an evening whilst taking in that last bit of sunshine, or why not enjoy your tea out here on summer nights.





# Finer details

Postcode: DL10 7LZ  
Freehold  
Council Tax Band: C  
EPC rating: D  
Gas central heating

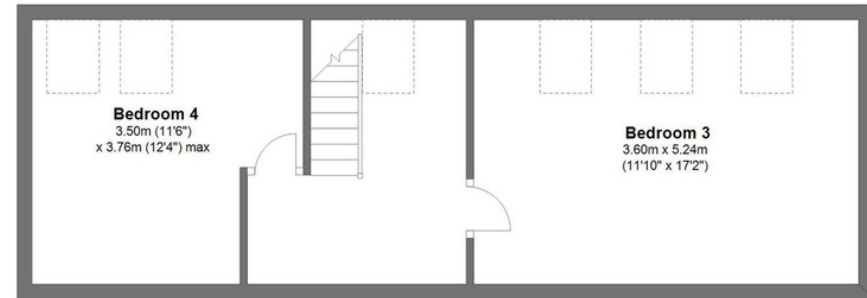
# Mill House Catterick Village

Total area: approx. 192.9 sq. metres (2076.1 sq. feet)



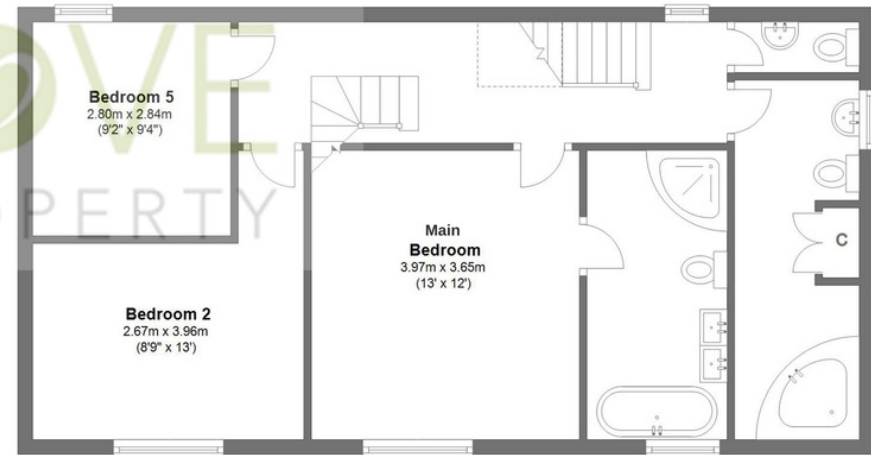
**Ground Floor**

Approx. 87.0 sq. metres (936.5 sq. feet)



**Second Floor**

Approx. 40.7 sq. metres (437.8 sq. feet)



**First Floor**

Approx. 65.2 sq. metres (701.7 sq. feet)

Whilst every attempt has been made to ensure the accuracy of the floorplans contained here, measurements of doors, windows, rooms and any other items are approximate and no responsibility is taken for any error, omission or mis-statement. This plan is not drawn to scale and is for illustrative purposes only & should be used as such by any prospective purchaser. Created especially for Love Property by Vue3sixty Ltd