



161 High Road, Lancaster, LA2 6PY

£250,000

Rental income approaching 7% PA. Total income is £16,720.A fantastic investment of a double level property, located in the lovely village of Halton in the Lune Valley. The ground level consists of double fronted commercial units: Hair Salon and Beauty Salon, with separate access to each salon. A residential maisonette also has access to the ground floor from the rear of the property where you will find a good-sized kitchen-diner, wet room with toilet/washbasin and hallway with storage cupboard. A stairway leads to the first-floor large lounge with wonderful views, which is located at the front of the property and a double bedroom. The maisonette also benefits from a lovely well-kept garden, a driveway with valuable parking space, and a large outdoor shed that has potential to be converted into a garage.

The whole of the maisonette has been decorated to a high standard and has new carpets throughout.

This is a wonderful investment opportunity.

Key Features

- Commercial & Residential Opportunity
 - Immediate Rental Income Stream
- Double Fronted Shop Units with Separate Access to Each Unit
 - 1 Large 2 Floor Maisonette to Rear

Commercial

The commercial units comprise of a well-established Hairdressing Salon and a separate Beauty Salon. The unit is double fronted with two large front windows, one for each salon and a large window to the rear of the Hair Salon, so both Salons benefit from outdoor light. There is one main front door (lockable) entrance that leads to two separate lockable doors, one to each Salon. Both Salons have a separate WC. The Hairdressers has a reception counter area, a large well maintained modern hairdressing space with built in sinks and hair washing facilities, a kitchenette and laundry space.

The Beauty Salon has a modern reception to the front of the Salon that includes the Nail area and to the rear is the well-equipped Beauty/Massage therapy facilities. These rooms are divided by a stud wall.

The Maisonette

Access to the Maisonette is at the rear of the building via a double-glazed door, which leads to a medium sized, recently modernised new kitchen/diner that includes a 2 ring Zanussi hob and ample storage cupboards. A recently installed Worcester Bosch, condensing combination boiler is in the kitchen. The kitchen diner overlooks the garden, and the patio area is located beside the maisonette entrance making the patio easily accessible to the kitchen/diner.

The door at the rear of the kitchen/diner leads to a hallway, which includes a storage cupboard. On the right side of the hallway is a good sized, modern accessible wet room with WC and wash basin.

Stairs in the hallway lead up to the first floor. At the top of the stairs is a small landing with a storage cupboard and additional loft space. On the left is a door leading to a large living room that benefits from a sizable front window giving access to wonderful views over the lovely Lune Valley countryside. There is a small storage cupboard at the back of the room. To the right of the small landing a door leads to a generous double bedroom that easily houses wardrobes, double bed, drawers/bedside tables and has views to the side of the building. There is also cupboard storage in the eaves.

Garden

A lovely lawned garden with mature shrubs and plants is located to the rear of the property for the resident(s) of the Maisonette to enjoy. There is also a patio with seating area next to the kitchen diner that overlooks the garden, making this a wonderful relaxing area to spend your time.

Large Outdoor Shed

Capacity: 1

Currently used for storage but has great potential to be renovated into a garage.

Drive

Capacity: 1

Generous driveway parking to the side for the Maisonette and street parking at the front of the building for customers.

Floor Sizes

Total Floor Area

Total Floor Area Approximately 1187 sq.ft. (110.4 sq.m.) not including hallway and landing.

Ground Floor Area

Ground Floor Area Approximately 813 sq.ft. (75.6 sq.m.)

Kitchen/Diner (ground) 8'11" x 12'2" (2.73 x 3.72)

Bathroom (ground) 6'0" x 9'6" (1.83 x 2.92)

Beautician front reception & nail salon (ground) 9'2" x 9'11" (2.81 x 3.04)

Beautician back massage & therapy room (ground) 9'6" x 9'8" (2.92 x 2.95)

Beautician WC (ground) 3'7" x 11'7" (1.11 x 3.55)

Hair Salon (ground) 10'10" x 27'9" (3.32 x 8.48)

Hair Salon Kitchenette (ground) 4'10" x 6'0" (1.49 x 1.83)

Hair Salon WC (ground) 2'3" x 4'8" (0.69 x 1.43)

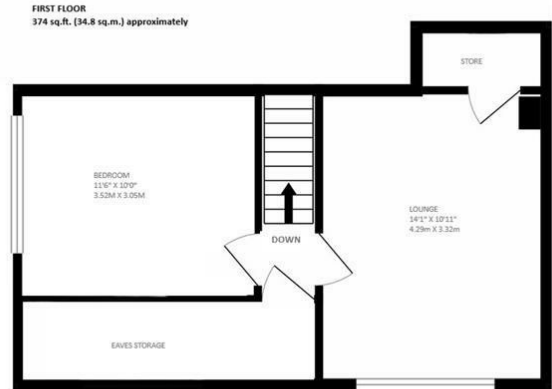
First Floor Area

First Floor Area Approximately 374 sq. ft. (34.8 sq.m.)

Lounge (first floor) 10'10" x 14'0" (3.32 x 4.29)

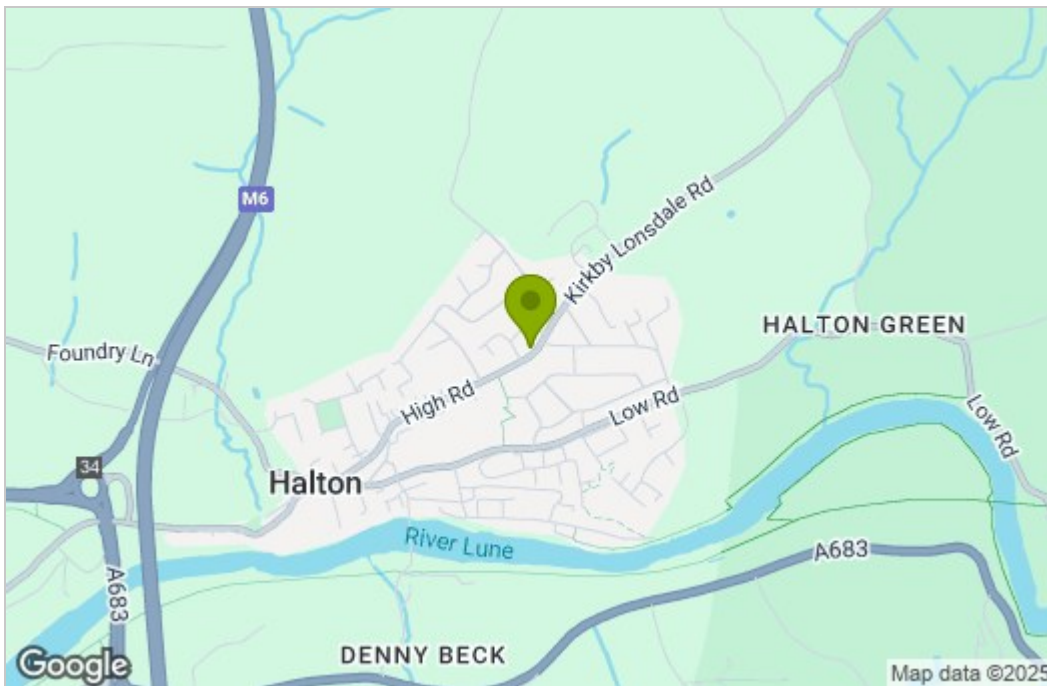
Bedroom (first floor) 10'0" x 11'6" (3.05 x 3.52)

Floor Plan

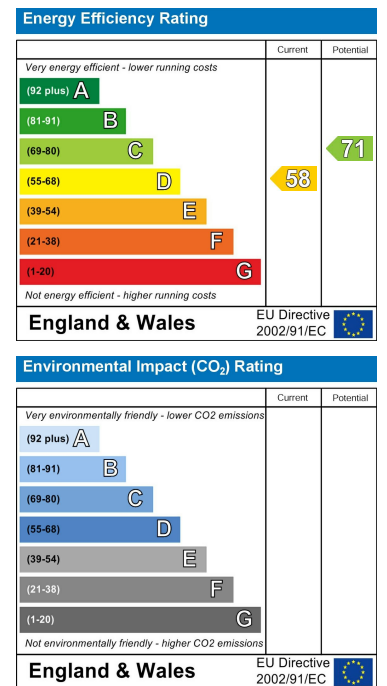


DISCLAIMER ?????
SIZE OF ROOM MEASUREMENTS
ANY OTHER???

Area Map



Energy Efficiency Graph



These particulars, whilst believed to be accurate are set out as a general outline only for guidance and do not constitute any part of an offer or contract. Intending purchasers should not rely on them as statements of representation of fact, but must satisfy themselves by inspection or otherwise as to their accuracy. No person in this firm's employment has the authority to make or give any representation or warranty in respect of the property.