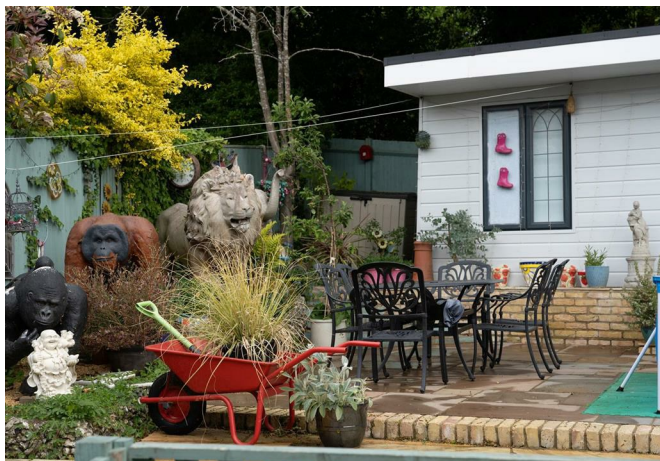




Prestbury Crescent, Banstead

£600,000





Modern four bedroom, extended family home in a quiet road close to local amenities and two well regarded primary schools.





Located in the quiet spot of Prestbury Crescent just outside of Woodmansterne Village, this extended four-bedroom semi-detached family home offers a blend of modern living with its spacious layout and addition of the cabin ensuring everyone has their own space. The property has a lovely open kitchen/dining space to the rear where the family can come together.

The current owner has given the property a modern look enhanced by tasteful pops of colour that add a unique touch to each room. They have also changed the garage into a self contained office area with plastered walls and full power - it you dont need an office it would make a great space for good, clean storage or even back as a garage.

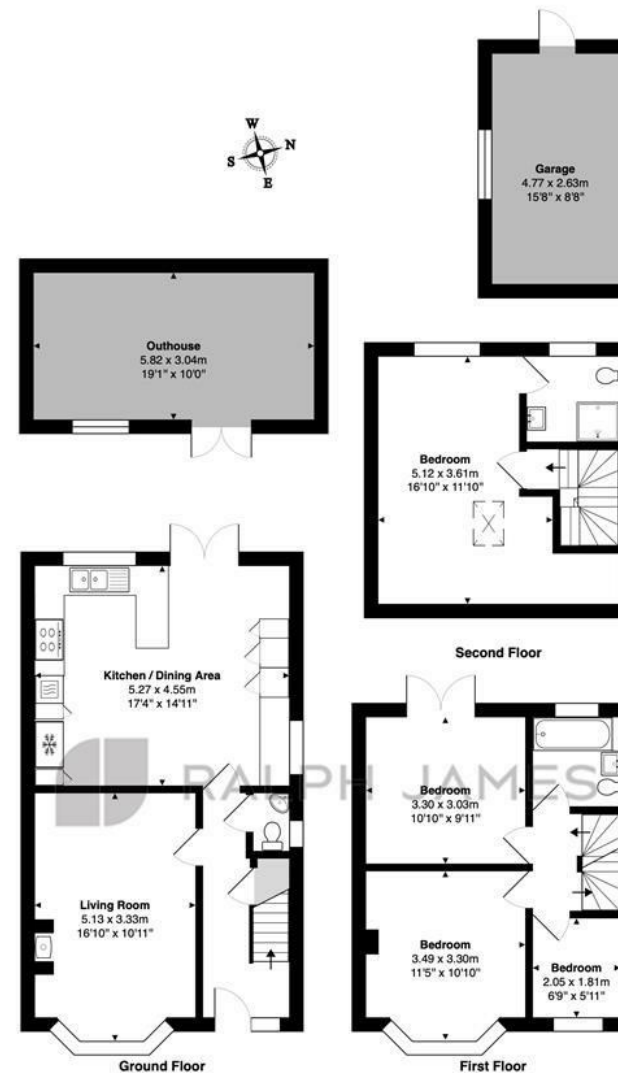
The property boasts the convenience of off-road parking and a garage for convenience. The quiet location further enhances the appeal while still being close to local amenities. Families will appreciate the proximity to two well-regarded primary schools, aswell as Woodmansterne and Coulsdon Train Stations for those needing to commute.

With its thoughtful design and good location, it presents a great opportunity for those looking to settle in a welcoming community.



Need to know

- Extended four bedroom semi detached property
- Primary suite with en-suite
- Modern with many touches of colour throughout
- Lovely extended kitchen/family room to the rear
- Cabin in the rear garden that could be a play space, den or office
- Close to 2 well regarded primary schools
- Close to two local train stations
- Walking distance to local amenities
- Well located in the top corner of the road giving a sense of space to the front with amazing views out to Chipstead Golf Course



Interested?

reigate@ralphjames.co.uk
01737 333677

1

ralphjames.co.uk

Prestbury Crescent, Banstead
Total Area: 121.9 m² ... 1313 ft² (excluding outhouse)

FOR ILLUSTRATIVE PURPOSES ONLY
All measurements are approximate and for display purposes only

Whilst every attempt has been made to ensure the accuracy of the floor plan shown, all measurements, positioning, fixtures, features, fittings and any other data shown are an approximate interpretation for illustrative purposes only and are not to scale.

No responsibility is taken for any error, omission, mis-statement or use of data shown.

The above statement applies to both 'Still Moving London LTD' and the Company or individual displaying this floor plan.

Unauthorised reproduction prohibited.

© Still Moving London LTD (www.stillmoving.london)

RALPH JAMES