



Elizabeth Drive, Banstead

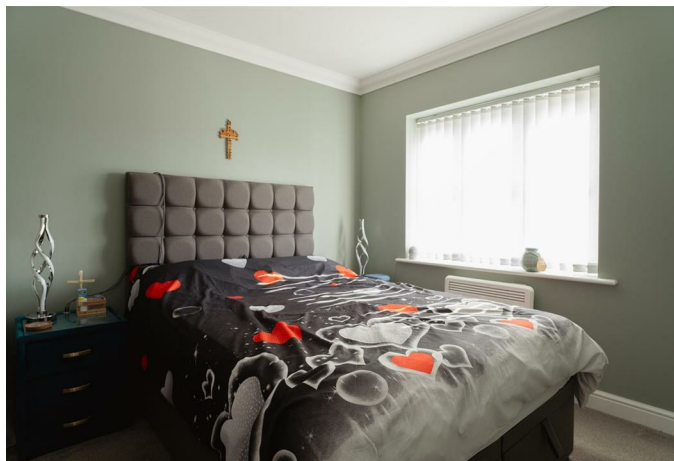
£315,000





Newly decorated two double bedrooms flat with arguably the best views in the development. Set in 28 acres of woodland and open greenspace.





Set in the stunning development of Elizabeth Drive, Banstead, this lovely two-bedroom apartment offers a blend of modern living and natural beauty surrounded by 28 acres of lush woodland and open green space leading directly to the enchanting Banstead Woods.

The apartment is fortunate enough to have a spacious lounge boasting stunning views over the original Rose Garden, while the two double bedrooms have views of the peaceful courtyard - arguably the best views of the development. There is an enclosed kitchen which our vendor recently replaced in keeping with the modern feel of the remainder of the property which has also been decorated throughout.

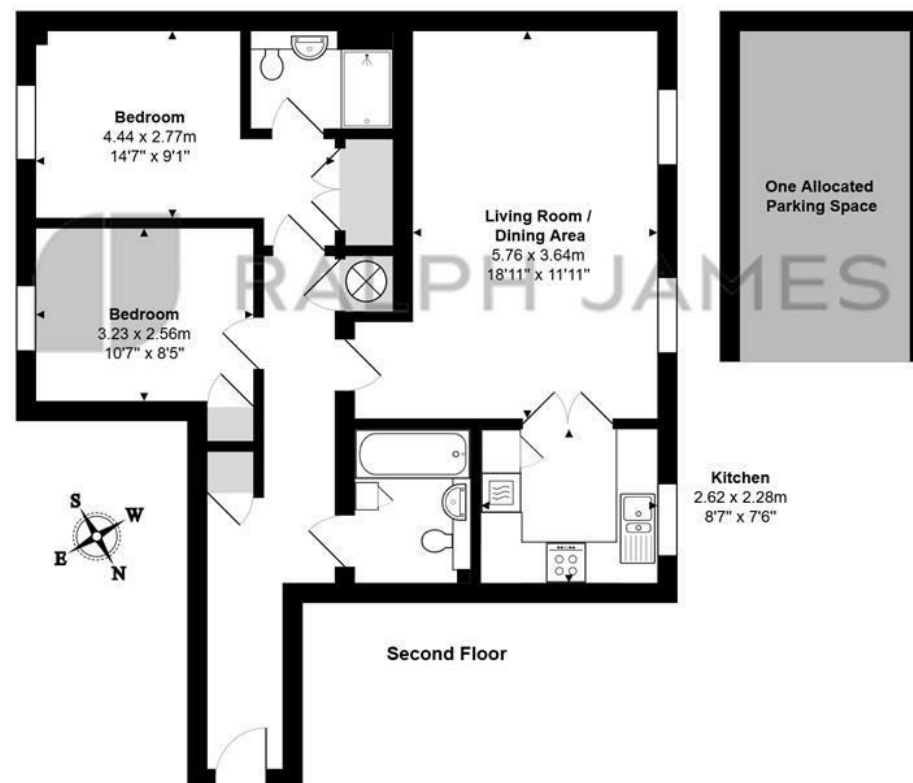
This apartment also benefits from two well-appointed bathrooms and the property includes allocated parking, complemented by ample visitor spaces.

With its idyllic location and modern amenities, this apartment is a perfect choice for those seeking a lifestyle in a beautiful setting. Whether you are looking to unwind in nature or enjoy the comforts of a stylish home, this property is sure to impress.



Need to know

- Two bedroom flat in a beautiful converted building
- This property has, arguably, the best views over the peaceful Rose Garden from the lounge and The Courtyard from the bedroom
- Set within 28 acres of unspoilt and fully maintained woodland backing onto Banstead Woods, complete with private tennis courts
- Allocated parking with lots of additional visitor parking
- Separate kitchen
- Spacious lounge
- Newly decorated throughout
- Walking distance to Banstead Village and a full range of local amenities
- Gated development with residents number plate recognition ensuring complete privacy



Elizabeth House, Elizabeth Drive, Banstead

Total Area: 72.0 m² ... 775 ft² (excluding one allocated parking space)

FOR ILLUSTRATIVE PURPOSES ONLY.

Whilst every attempt has been made to ensure the accuracy of the floor plan shown, all measurements, positioning, fixtures, features, fittings and any other data shown are an approximate interpretation for illustrative purposes only and are not to scale.

No responsibility is taken for any error, omission, miss-statement or use of data shown.

The above statement applies to both 'Still Moving London LTD' and the Company or individual displaying this floor plan.

Unauthorised reproduction prohibited.

© Still Moving London LTD (www.stillmoving.london)

Interested?

reigate@ralphjames.co.uk
01737 333677

1

ralphjames.co.uk

