



Clayhall Lane, Reigate
£575,000

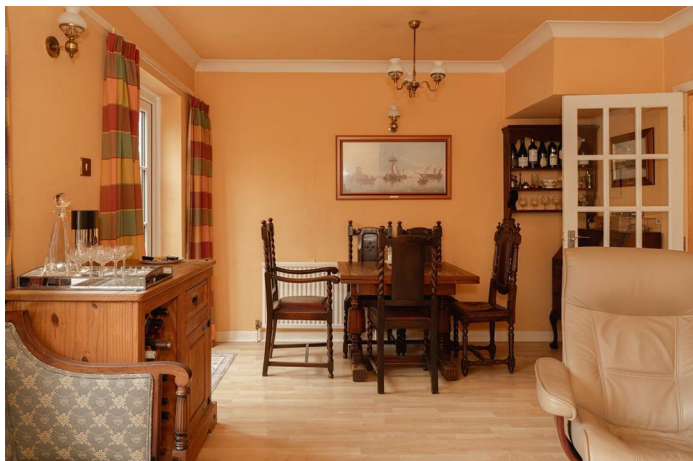




“

Tucked away on the edge of Reigate, this four bedroom home enjoys superb views over open farmland and beyond

”



This end terrace home offers the best of both worlds, conveniently placed just a short distance from the town centre with the most stunning countryside views!

The rooms are spacious throughout the property. On the ground floor the kitchen dining room looks out to the front of the house, towards the open fields. There is plenty of space for a table and chairs so you can enjoy the views. The lounge spans the whole width of the house and has a cosy log burner in situ, great for those winter evenings.

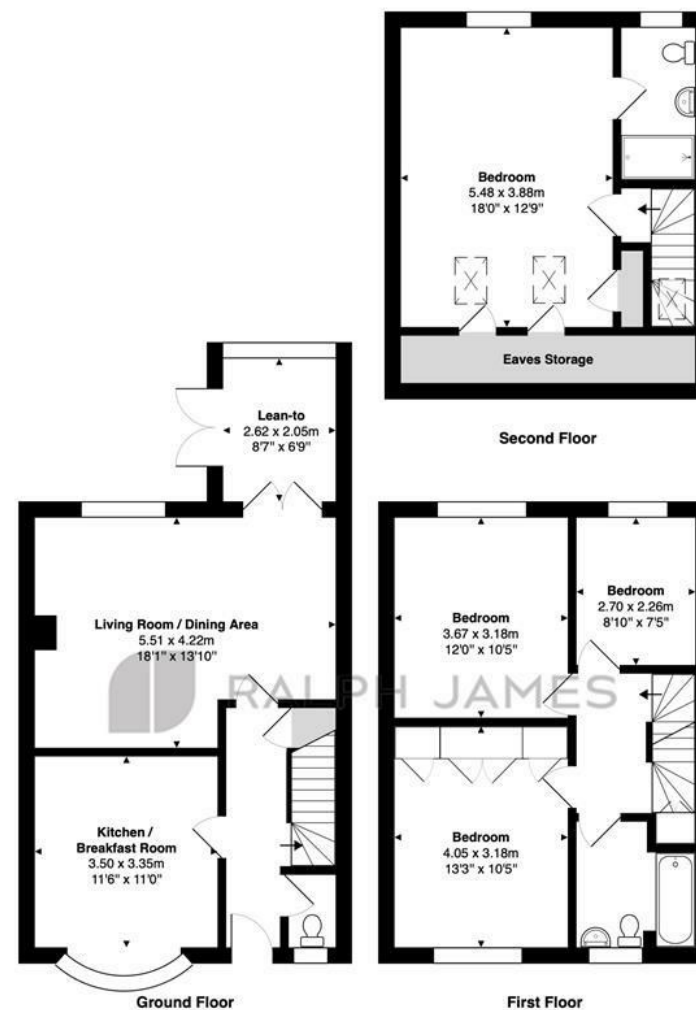
Upstairs there are four good size bedrooms and two bathrooms laid out over two floors. On the first floor are two double bedrooms as well as a large single, which also makes an ideal office space. The family bathroom is modern and tiled throughout. On the second floor, the main bedroom enjoys the best views in the house! The room is bright and spacious with ample space for wardrobes and lots of eaves storage. The en suite shower room has a large walk in shower cubicle, making busy mornings a breeze!

Outside, there is a rear garden with access to the garage and an allocated parking space to the rear. The front garden is raised above street level and is the perfect spot to sit and enjoy the sunsets whilst looking out to the fields beyond.



Need to know

- Located on the edge of Reigate town centre, enjoying open views over farmland and countryside
- Spacious accommodation with four good size bedrooms laid out over two floors
- Stunning West facing views from the front garden, perfect to watch the sunset
- Kitchen dining room to the front of the property
- Large lounge with built in log burner
- Family bathroom, en suite shower room and useful downstairs cloakroom
- Garage to the rear as well as one allocated parking spaces



Interested?

reigate@ralphjames.co.uk
01737 333677

1

ralphjames.co.uk

Clayhall Lane, Reigate

Total Area: 128.7 m² ... 1385 ft²

FOR ILLUSTRATIVE PURPOSES ONLY.

Whilst every attempt has been made to ensure the accuracy of the floor plan shown, all measurements, positioning, fixtures, features, fittings and any other data shown are an approximate interpretation for illustrative purposes only and are not to scale.

No responsibility is taken for any error, omission, miss-statement or use of data shown.

The above statement applies to both 'Still Moving London LTD' and the Company or individual displaying this floor plan.

Unauthorised reproduction prohibited.

Â© Still Moving London LTD (www.stillmoving.london)

 RALPH JAMES