



Deerings Road, Reigate

Guide Price £975,000





“

This property has never been on the open market since it was built circa 1898! It's a wonderful example of a Victorian home which has retained a wealth of original character.

”



This charming Victorian semi detached home is located in a popular residential area, within walking distance to Reigate town centre and the train station. A selection of excellent local schools are also within walking distance, including Reigate St Marys, Reigate Grammar School, Holmesdale Community Infants, Reigate Priory and Reigate Parish School.

The property was built in approximately 1898 and has never been sold on the open market, having been bought privately in 1934 and owned by the same family since then.

Once inside, the house is full of character, with original fireplaces in most rooms, high ceilings, deep skirting boards and picture rails. The lounge and dining room can be joined together by opening the partition doors and there is a separate kitchen with space for a breakfast table.

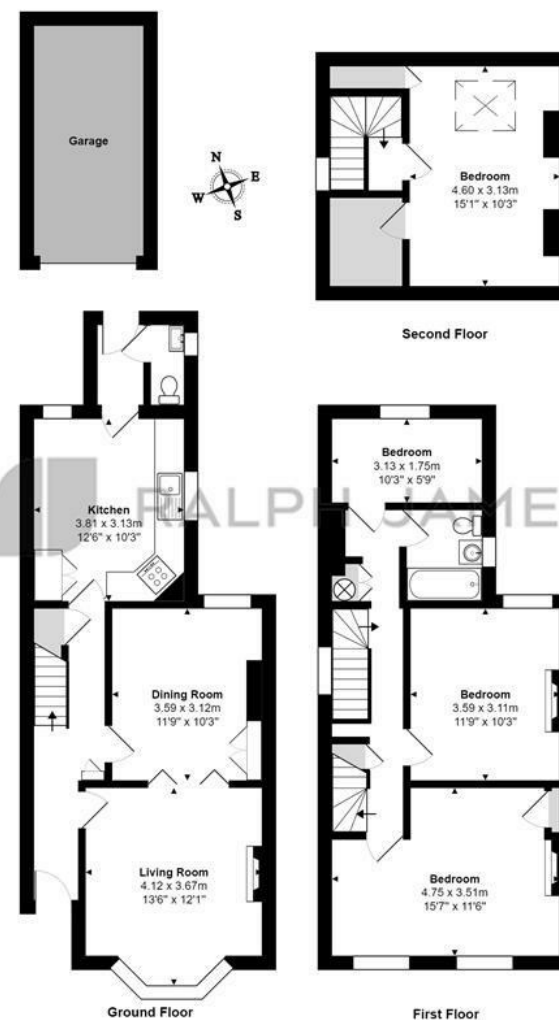
Upstairs, the property has four bedrooms laid out over two floors. Three of the bedrooms are good size doubles and the fourth is a single or would make a great home office.

Outside, the garden is a real delight, enjoying a wider plot due the detached garage which sits alongside the house. There is also a driveway providing off road parking and a pretty front garden.



Need to know

- Semi detached Victorian property in popular road in central Reigate
- Planning permission granted for double storey side extension. Planning reference: 25/00397/HHOLD
- Three double bedrooms as well as a good size single
- Upstairs bathroom and downstairs cloakroom
- Lounge with original working fireplace and bay window
- Dining room with option to open it up to the lounge
- Attractive rear garden, fully enclosed with mature shrubs and plants
- Detached garage and driveway parking
- Character features throughout the property
- Walking distance to Reigate High Street and station



Interested?

reigate@ralphjames.co.uk
01737 333677

ralphjames.co.uk

Deerings Road, Reigate
Total Area: 119.1 m² ... 1282 ft² (excluding garage)
FOR ILLUSTRATIVE PURPOSES ONLY.
Whilst every attempt has been made to ensure the accuracy of the floor plan shown, all measurements, positioning, fixtures, features, fittings and any other data shown are an approximate interpretation for illustrative purposes only and are not to scale.
No responsibility is taken for any error, omission, mis-statement or use of data shown.
The above statement applies to both 'Still Moving London LTD' and the Company or individual displaying this floor plan.
Unauthorised reproduction prohibited.
© Still Moving London LTD (www.stillmoving.london)