



Reeve Road, Reigate

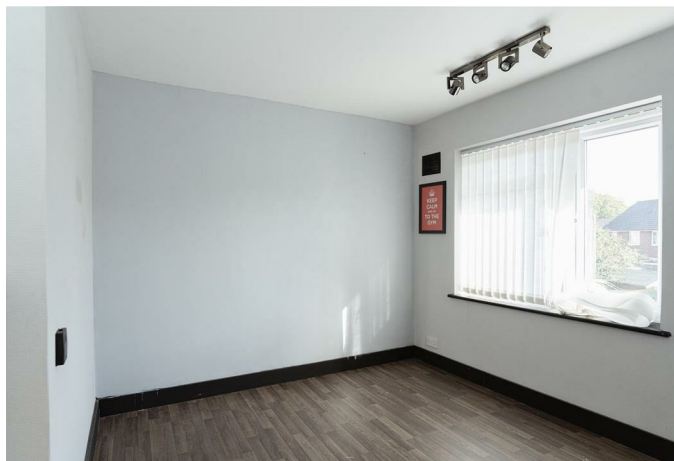
£2,500 Per Month





If you've been hunting for a Reigate home that combines everyday comfort with outdoor space and thoughtful extras, this one ticks every box. Ready to move in and make your own — it's a home that grows with you.





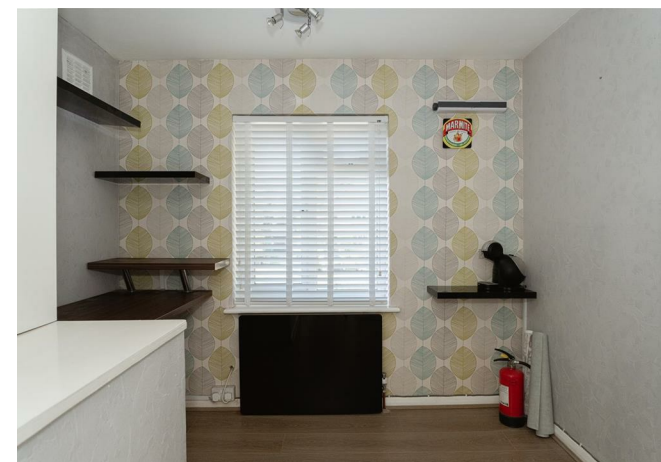
Step through the front door and into a bright hallway with space for coats and shoes before heading into the lounge — a warm, light-filled room with a large picture window and a feature fireplace for cosy evenings in.

The kitchen/dining area runs the full width of the house, designed for easy cooking and relaxed mealtimes. Sliding doors open directly onto the patio, perfect for summer barbecues or keeping an eye on little ones playing outside.

Upstairs you'll find two spacious double bedrooms, one with fitted wardrobes and air conditioning, plus a third single bedroom ideal as a nursery, home office, or dressing room. The family bathroom includes a modern white suite with bath and overhead shower.

Outside, the rear garden enjoys plenty of sun and has a "secret garden" feel towards the back — a lovely spot for quiet mornings or evening drinks. There's also a decked entertaining area to the front, driveway parking, and an impressive workshop/shed setup for storage or hobbies.

All within walking distance of Reigate Secondary School, local shops, and leafy green spaces, making daily life smooth and convenient.



Need to know

- Semi-detached family home in South Reigate
- Bright lounge with feature fireplace
- Spacious kitchen/dining area opening onto garden
- Two double bedrooms plus a versatile third room
- Modern family bathroom with shower over bath
- Driveway parking and private rear garden
- Workshop and storage shed included
- Convenient for schools and transport links
- EPC Rating: D
- Council Tax Band: D



Interested?

reigate@ralphjames.co.uk
01737 333677

1

ralphjames.co.uk

Reeve Road, Reigate
Total Area: 98.5 m² ... 1061 ft²
FOR ILLUSTRATIVE PURPOSES ONLY.

Whilst every attempt has been made to ensure the accuracy of the floor plan shown, all measurements, positioning, fixtures, features, fittings and any other data shown are an approximate interpretation for illustrative purposes only and are not to scale.

No responsibility is taken for any error, omission, mis-statement or use of data shown.

The above statement applies to both 'Still Moving London LTD' and the Company or individual displaying this floor plan.

Unauthorised reproduction prohibited.

© Still Moving London LTD (www.stillmoving.london)

 RALPH JAMES