



Flanchford Road, Reigate

Guide Price £800,000 - £850,000





A rare find and an exciting opportunity to own one of Reigate's most iconic homes, perfectly placed on the edge of town, opposite Reigate Heath.





GUIDE PRICE £800,000 - £850,000

Steeped in history, the Reigate Heath Cottages are a well-known local landmark. Originally built in the 1800s as workers' cottages for the nearby quarry, the row is instantly recognisable thanks to their distinctive coloured façades.

The property boasts unrestricted views of the beautiful Reigate Heath, providing a serene backdrop for daily life. Residents will appreciate the proximity to scenic walks and local pubs, making it an ideal location for those who enjoy the outdoors and a vibrant community atmosphere. Additionally, the town centre is just a short walk away, offering a variety of shops, cafes, and amenities.

Having been recently updated, the ground floor features elegant Amtico flooring, creating a warm and inviting space. The 'British Racing Green' kitchen with white quartz worktops was designed by Lime Designs in Dorking, ensuring a modern yet timeless aesthetic that is both functional and stylish.

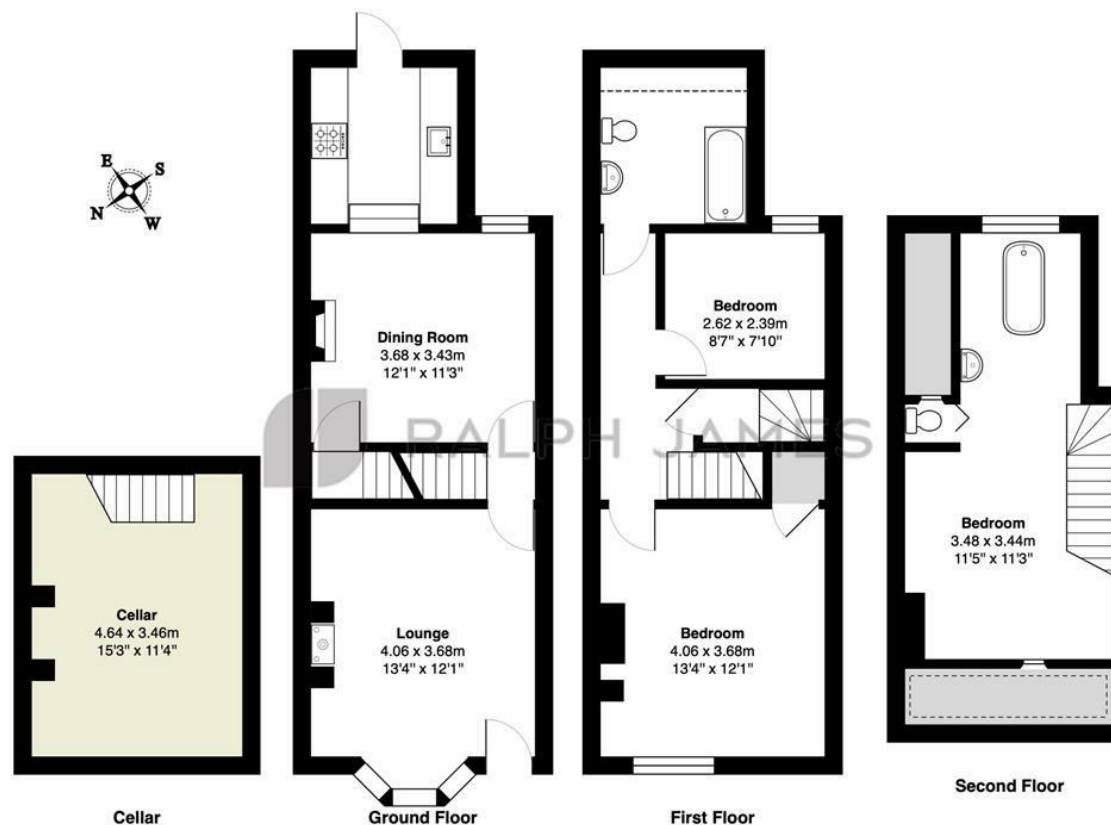
Upstairs there are three good size bedrooms and two bathrooms. The family bathroom has been completely remodeled and provides an air of luxury with sleek finishes and excellent built in storage. The bedroom on the second floor has a feature, free standing, roll top bath with a view, as well as a separate WC and handbasin.

Outside the rear garden stretches out approximately 150 ft and has a brick built covered storage area, which could easily be transformed into an outdoor kitchen/ BBQ area. The views across the Heath to the front are simply stunning and the perfect place to sit and enjoy the sunset.



Need to know

- Recently updated three bedroom character home
- Located opposite Reigate Heath, offering stunning, uninterrupted, scenic views
- Gorgeous, handleless, shaker style kitchen with quartz worktops, patinated bronze Quooker tap and built in Neff & AEG appliances
- Dining area open plan to kitchen, creating a sociable space
- Separate living room with bay window and cosy log burner
- Beautifully re fitted bathroom with gorgeous Quorn Stone tiles in herringbone pattern and vaulted ceiling
- Three double bedrooms laid out over two floors
- Second floor bedroom with free standing roll top bath and separate WC
- Walking distance to The Black Horse, Skimmington Castle & The Pheasant as well as Reigate town centre
- No forward chain



Flanchford Road, Reigate Heath

Total Area: 119.1 m² ... 1282 ft²

FOR ILLUSTRATIVE PURPOSES ONLY.

Whilst every attempt has been made to ensure the accuracy of the floor plan shown, all measurements, positioning, fixtures, features, fittings and any other data shown are an approximate interpretation for illustrative purposes only and are not to scale.

No responsibility is taken for any error, omission, miss-statement or use of data shown.

The above statement applies to both 'Still Moving London LTD' and the Company or individual displaying this floor plan.

Unauthorised reproduction prohibited.

Â© Still Moving London LTD (www.stillmoving.london)



Interested?

reigate@ralphjames.co.uk
01737 333677

ralphjames.co.uk