



West Street, Reigate

Guide Price £1,000,000 to £1,050,000





“

Tucked away in a prime location just a short stroll from the heart of Reigate, this exclusive development of just six homes offers the perfect blend of tranquility and convenience. Set in a sought after location, close to the vibrant high street - brimming with popular restaurants, boutique shops, and cafes, and just steps from the scenic beauty of Reigate Heath.

”



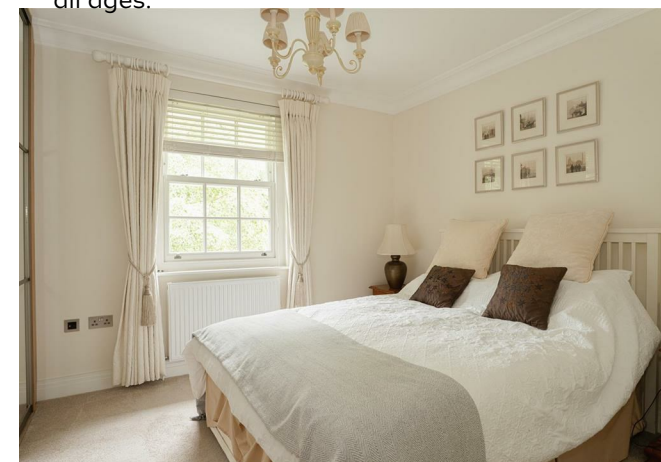
Price Range £1,000,000 to £1,050,000

This luxurious home was built in 2017 and offers immaculately presented and upgraded accommodation. With a spacious entrance hall, wet room and formal lounge on the ground floor, the heart of the home is the fabulous large kitchen/diner with a range of high-end appliances and bifold doors which open up to the garden to create a really wonderful entertaining space. The master bedroom on the first floor has plenty of wardrobes and a large en suite bathroom and there are a further two double bedrooms and a family shower room on this floor. On the second floor is a great space that can be used as another bedroom, family room or a large working area as well as a large airing cupboard and eaves storage.



Externally the property has so much to offer. To the front is a really attractive garden with flowerbeds bursting at the seams. The back garden is a really attractive landscaped area with lovely features such as a good sized patio, lawn and wall-mounted water feature which are all beautifully lit in the evening. There is a well insulated garage/workshop and plenty of storage areas in the garden as well as off street parking to the rear of the property.

This lovely home is just a short stroll from the town centre where all the popular shops, bars, cafes and restaurants can be enjoyed. The train station is less than a mile away with direct trains to London Victoria and London Bridge and you are spoilt for choice for many schools close by for all ages.



Need to know

- Luxurious, modern semi detached home
- High specification kitchen/diner
- Bifold doors opening out to the wonderful garden
- Formal lounge with gas fireplace
- Master bedroom with large bathroom
- 2 further double bedrooms on the first floor and a family shower room
- 4th bedroom/family room on second floor
- Lovely landscaped gardens with plenty of features
- Walking distance to Reigate town center and station and close to popular local schools
- End of chain



Interested?

reigate@ralphjames.co.uk
01737 333677

www.ralphjames.co.uk
@ralphjamesestateagents

West Street, Reigate

Total Area: 166.8 m² ... 1796 ft² (excluding garage)

FOR ILLUSTRATIVE PURPOSES ONLY.

Whilst every attempt has been made to ensure the accuracy of the floor plan shown, all measurements, positioning, fixtures, features, fittings and any other data shown are an approximate interpretation for illustrative purposes only and are not to scale.

No responsibility is taken for any error, omission, miss-statement or use of data shown.

The above statement applies to both 'Still Moving London LTD' and the Company or individual displaying this floor plan.

Unauthorised reproduction prohibited.

© Still Moving London LTD (www.stillmoving.london)

RALPH JAMES