



Broadhurst Gardens, Reigate

Guide Price £775,000





“

Relax and enjoy the peace and quiet in the
sunshine found in this stunning garden, this
spacious home is perfect for any growing family.

”



This gorgeous 1930's family home is located in a peaceful cul de sac, just South of Reigate town centre but still within walking distance. The property has a driveway and garage as well as a beautiful South Westerly facing garden, which is a real sun trap.

Internally the house is light and bright throughout with spacious and airy rooms, high ceilings and character features including original doors, picture rails and fireplaces. The neutral palette of colours makes this home inviting and easy to move straight into and there is further potential to extend on such a good size plot. (subject to planning)

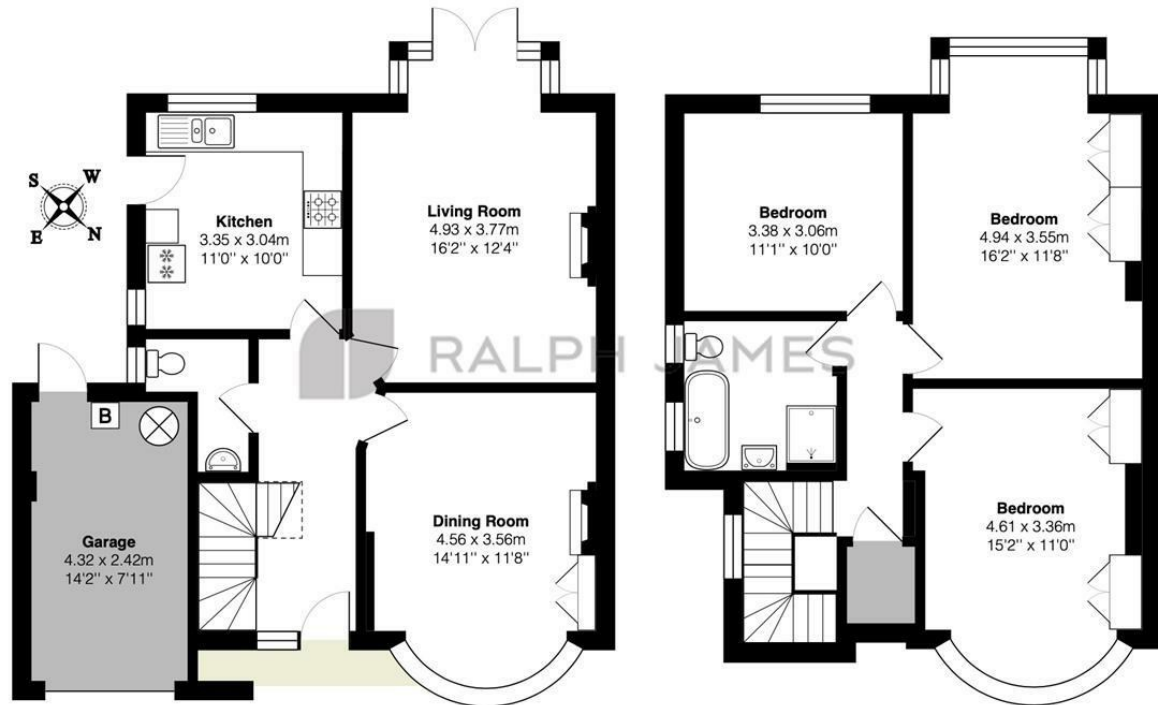
There is a modern family bathroom and a useful downstairs cloakroom. The kitchen has recently been updated with pale grey, shaker style units and complimentary metro style tiling.

The garden is a pure delight, approximately 160 ft long, the lawn stretches out in front of you with a patio area placed to catch the last of the afternoon and evening sunshine. There are a variety of fruit trees to the rear and plenty of space for the family to enjoy.



Need to know

- Semi detached 1930's family home
- Three spacious, double bedrooms, two of which have built in wardrobes
- Modern upstairs bathroom and downstairs cloakroom
- Two reception rooms with feature fireplaces
- Garage and driveway
- Stunning, south westerly rear garden with mature trees and plants, measuring approximately 160 ft
- Quiet cul de sac location, close to shops, schools, Reigate town centre and Priory Park
- Popular, quiet, residential cul de sac
- Potential to extend (subject to planning)



Broadhurst Gardens, Reigate

Total Area: 125.5 m² ... 1350 ft²

FOR ILLUSTRATIVE PURPOSES ONLY.

Whilst every attempt has been made to ensure the accuracy of the floor plan shown, all measurements, positioning, fixtures, features, fittings and any other data shown are an approximate interpretation for illustrative purposes only and are not to scale.

No responsibility is taken for any error, omission, miss-statement or use of data shown.

The above statement applies to both 'Still Moving London LTD' and the Company or individual displaying this floor plan.

Unauthorised reproduction prohibited.

Â© Still Moving London LTD (www.stillmoving.london)

 RALPH JAMES

Interested?

reigate@ralphjames.co.uk
01737 333677

ralphjames.co.uk