



Yorke Gardens, Reigate

£1,100 Per Month

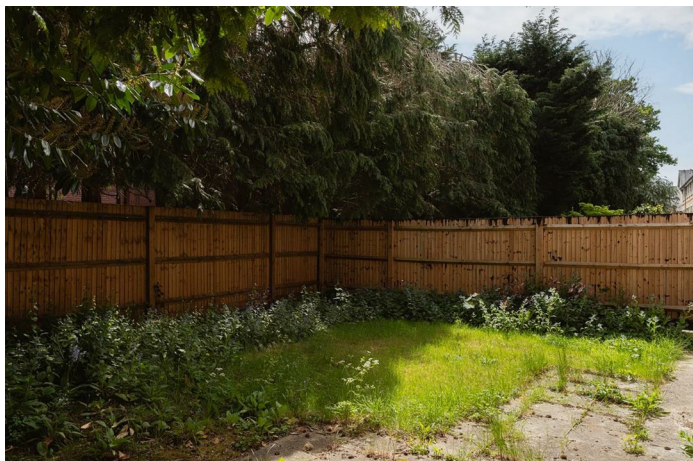




SINGLE OCCUPANCY ONLY

A bright and spacious one-bedroom apartment in a quiet cul-de-sac, just moments from Reigate station and town centre. Featuring a private entrance, shared garden access, modern interiors, and allocated parking. Available now, unfurnished.





SINGLE OCCUPANCY ONLY

Tucked away in a peaceful cul-de-sac, yet just moments from Reigate station and the vibrant town centre, this charming one-bedroom apartment offers the perfect blend of tranquillity and convenience.

Step through your own private front door and into a thoughtfully laid-out home designed for modern living. To the front, a generously sized kitchen provides excellent storage and comes fully equipped with appliances – ideal for home cooking or casual entertaining.

The bright and inviting living room sits at the heart of the home, enjoying a natural flow to the shared garden via direct access – a perfect spot for morning coffee or relaxed summer evenings.

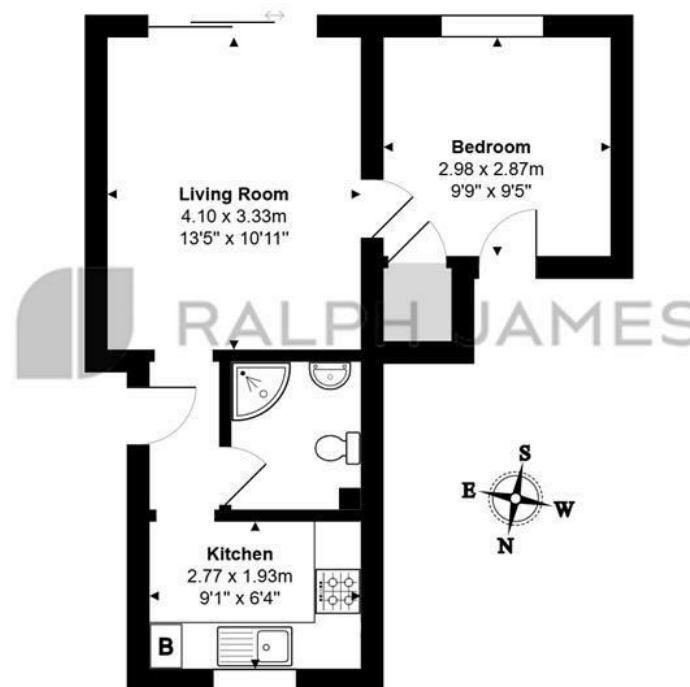
The double bedroom is well-proportioned and bathed in natural light, while the contemporary shower room offers a sleek and stylish finish.

With an allocated parking space included and available to move into immediately, this unfurnished home is ready for you to make your own.



Need to know

- Quiet cul-de-sac location offering peace and privacy
- Just a short walk to Reigate train station and town centre
- Private front door entrance for added independence
- Spacious kitchen with ample storage and integrated appliances
- Bright and airy living room with direct access to a shared garden
- Well-sized double bedroom with plenty of natural light
- Modern, stylish shower room with a sleek finish
- Allocated parking space included; available now and unfurnished
- EPC: C
- Council Tax: A



Ground Floor

Yorke Gardens, Reigate

Total Area: 36.0 m² ... 388 ft²

FOR ILLUSTRATIVE PURPOSES ONLY.

All measurements are approximate and for display purposes only

Whilst every attempt has been made to ensure the accuracy of the floor plan shown, all measurements, positioning, fixtures, features, fittings and any other data shown are an approximate interpretation for illustrative purposes only and are not to scale.

No responsibility is taken for any error, omission, miss-statement or use of data shown.

The above statement applies to both 'Still Moving London LTD' and the Company or individual displaying this floor plan.

Unauthorised reproduction prohibited.

© Still Moving London LTD (www.stillmoving.london)



Interested?

reigate@ralphjames.co.uk

01737 333677

1

ralphjames.co.uk