



Park Lane, Reigate

Guide Price £2,000,000





This is a truly special home in one of Reigate's most sought-after settings. Surrounded by the greenery of Priory Park and the Rugby club, yet you are just a few steps from the High Street with all it has to offer.





A rare opportunity to acquire a substantial, six-bedroom, detached family home enviably positioned directly opposite the beautiful Priory Park. Set back from the road and backing onto the rugby fields, offering a feeling of seclusion from all sides. The property has been thoughtfully re designed by the current owner, for both family life and entertaining.

The accommodation spans three floors and includes six generous double bedrooms, five well-appointed bathrooms, and a collection of stylish reception rooms filled with natural light. A large open-plan kitchen/dining area forms the heart of the home, seamlessly connecting to the stunning 300 ft west-facing garden through bi folding doors — perfect for al fresco dining and long summer evenings, watching the sunset.

The sizeable garden is a true highlight, offering rare space and seclusion in such a prime location. Mature planting, spacious lawn, and a large patio area, which creates a private retreat with glorious afternoon and evening sun.

Located just a short stroll from Reigate's charming town centre, the location is second to none. There is a selection of excellent schools within walking distance and the station is just over half a mile away.

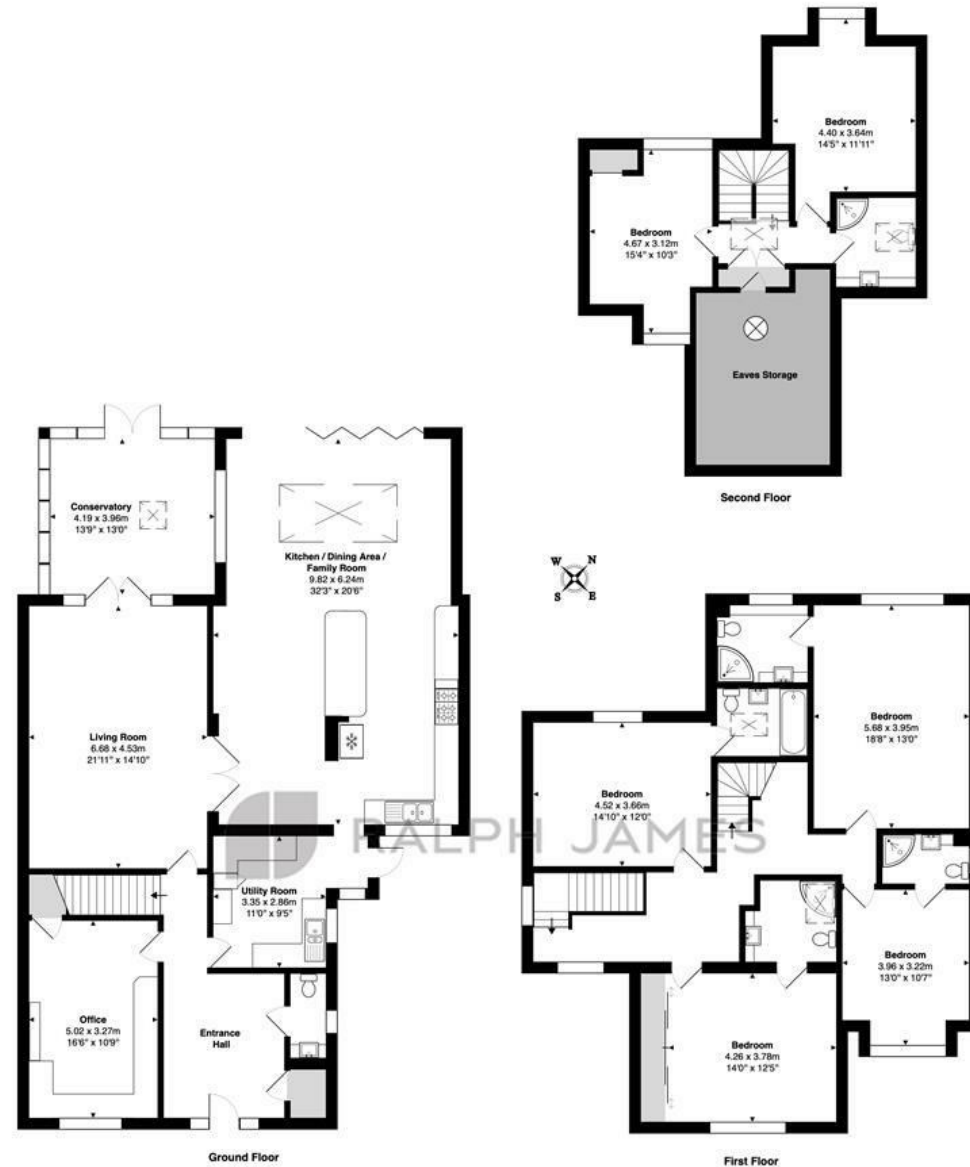
Need to know

- Spacious, detached family home, in exceptional location opposite Priory Park
- Six well proportioned double bedrooms, laid out over two floors
- Large, bright kitchen diner designed for modern living, with a central island, and access to the garden through bi folding doors
- Separate, spacious living room with cosy log burning stove and doors to conservatory
- Additional reception room, currently used as a home office, but could also be a playroom
- Four bedrooms on the first floor, each with en suite facilities
- Two further double bedrooms on the second floor, sharing a shower room
- Fabulous far reaching views from the upper floors
- A short walk to Reigate High Street and across the road to Priory Park
- Driveway parking for multiple cars and car port

Interested?

reigate@ralphjames.co.uk
01737 333677

ralphjames.co.uk



All measurements are approximate and for display purposes only FOR ILLUSTRATIVE PURPOSES ONLY.

Whilst every attempt has been made to ensure the accuracy of the floor plan shown, all measurements, positioning, fixtures, features, fittings and any other data shown are an approximate interpretation for illustrative purposes only and are not to scale.

No responsibility is taken for any error, omission, mis-statement or use of data shown.

The above statement applies to both 'Still Moving London LTD' and the Company or individual displaying this floor plan.

Unauthorised reproduction prohibited.

© Still Moving London LTD (www.stillmoving.london)