



Park Lane East, Reigate

Offers in Excess of £575,000





Located a short walk through Priory Park into Reigate, this three bedroom home is bright and spacious throughout. Ready to move straight in, with no forward chain!





Located a short distance from Reigate town centre, this lovely three bedroom, end terrace home is tucked back off the road and surrounded by leafy outlooks, giving a feeling of privacy. You can take an easy walk into town through various pathways into Priory Park and there is a handy Co op less than half a mile away.

The property has been updated in recent years and has a modern feel with neutral decor throughout. Inside, the large entrance hall is welcoming and provides ample space for storage of coats and shoes. There is a spacious lounge, dining room which has a double, front to back aspect, and being secluded from the road, there are leafy views to both sides. The rear is practically South facing, so light really pours through.

The kitchen has modern units and complimentary worktops and also enjoys the view over the rear garden. Upstairs there are two generous double bedrooms, one with built in wardrobes, and a third good size single room. The family bathroom has a shower over the bath and has been updated in recent years.

Outside, the rear garden is secluded and peaceful. There is a stunning porcelain patio, which is a real sun trap, perfect for al fresco dining! The property also has side access and there is plenty of room to install a shed or even a home office or garden room.

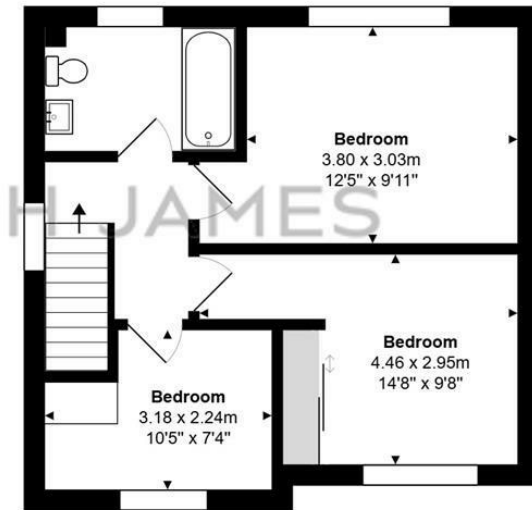


Need to know

- End of terrace home, a short distance from Reigate
- Three bedrooms, two of which are doubles
- Modern kitchen and bathroom
- Large, bright lounge / dining room with double aspect
- Modern kitchen, overlooking the rear garden
- Upstairs bathroom
- Set back from the road, providing privacy
- No forward chain



Ground Floor



First Floor

Park Lane East, Reigate

Total Area: 83.7 m² ... 900 ft²

FOR ILLUSTRATIVE PURPOSES ONLY.

Whilst every attempt has been made to ensure the accuracy of the floor plan shown, all measurements, positioning, fixtures, features, fittings and any other data shown are an approximate interpretation for illustrative purposes only and are not to scale.

No responsibility is taken for any error, omission, miss-statement or use of data shown.

The above statement applies to both 'Still Moving London LTD' and the Company or individual displaying this floor plan.

Unauthorised reproduction prohibited.

© Still Moving London LTD (www.stillmoving.london)



Interested?

reigate@ralphjames.co.uk
01737 333677

ralphjames.co.uk

