

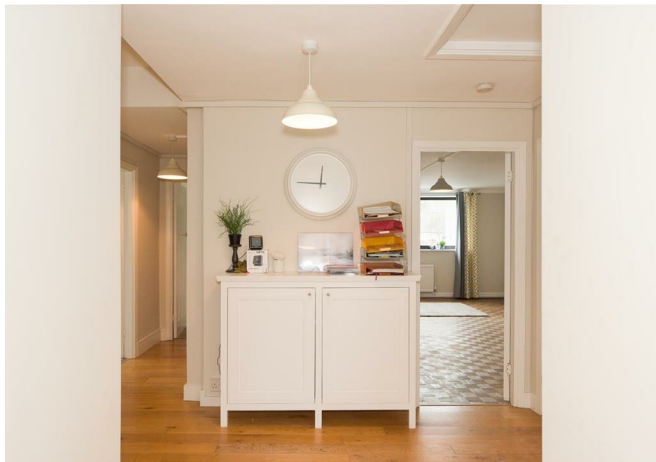


# Trehaven Parade, Hornbeam Road, Reigate

£1,500 Per Month







“

Woodhatch is the southern suburb of Reigate with 3 parades of shops. Western Parade is adjacent to the London to Brighton road, which is the only road towards the south from Reigate excluding the motorway network. This parade of shops contains a Co-Op, jewellers, a bakery, butchers and an Indian Restaurant among other shops. Opposite these shops, there is another parade of shops including an Off-licence, a cafe, a fish and chip shop, a petrol station and newsagents.

”



Ralph James are pleased to present this larger than most two-bedroom flat situated in the popular Woodhatch area of RH2.

Entering the flat with your own front door you are presented with a large open hallway, floor laid with parquet flooring throughout leading through to the large living space. Just off the hallway, you have the modern kitchen and bathroom along with two good-sized carpeted bedrooms.

Woodhatch is the southern suburb of Reigate with 3 parades of shops. Western Parade is adjacent to the London to Brighton road, which is the only road towards the south from Reigate excluding the motorway network. This parade of shops contains a Co-Op, jewellers, a bakery, butchers and an Indian Restaurant among other shops. Opposite these shops, there is another parade of shops including an Off-licence, a cafe, a fish and chip shop, a petrol station and newsagents.

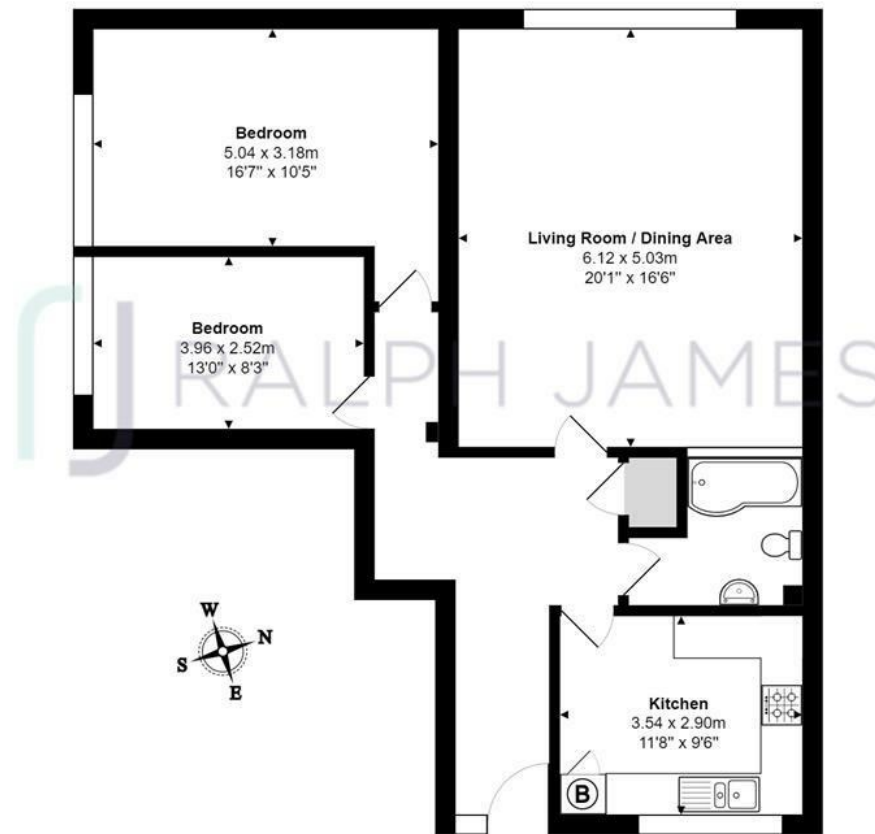
The flat has recently been lightly decorated in 2022 with the addition of new fitted double glazing windows.

Ready to move at the beginning of April, this flat is perfect for the young sharers looking for great room sizes or family looking to settle down with great schools on your doorstep.



## Need to know

- Large two bed
- Recently decorator
- Double glazing
- Woodhatch location
- Parquet flooring
- Close to parks
- Great schools
- Reigate on your doorstep
- Council tax: C
- EPC: D



### First Floor

Trehaven Parade, Hornbeam Road, Reigate

Total Area: 92.0 m<sup>2</sup> ... 990 ft<sup>2</sup>

FOR ILLUSTRATIVE PURPOSES ONLY.

Whilst every attempt has been made to ensure the accuracy of the floor plan shown, all measurements, positioning, fixtures, features, fittings and any other data shown are an approximate interpretation for illustrative purposes only and are not to scale.

No responsibility is taken for any error, omission, miss-statement or use of data shown.

The above statement applies to both 'Still Moving London LTD' and the Company or individual displaying this floor plan.

Unauthorised reproduction prohibited.

© Still Moving London LTD (www.stillmoving.london)

## Interested?

reigate@ralphjames.co.uk  
01737 333677

1

ralphjames.co.uk

 RALPH JAMES