



# Hillhouse Drive, Reigate

£800,000







Detached bungalow, tucked away on a lovely plot,  
approximately 15 minute walk into Reigate town  
centre







A rare find, so close to the town centre in Reigate, this detached bungalow offers a feeling of space and seclusion. Located at the end of a quiet cul de sac, surrounded by greenery, there is plenty of parking on the driveway for three or four cars.

Inside the property, the rooms are bright and spacious. The living room has a large bay window overlooking the front of the property. There is a kitchen dining room at the rear of the house which overlooks the stunning rear garden. The kitchen has been updated in recent years and includes built in appliances and a quooker tap. There is also a very useful separate utility room.

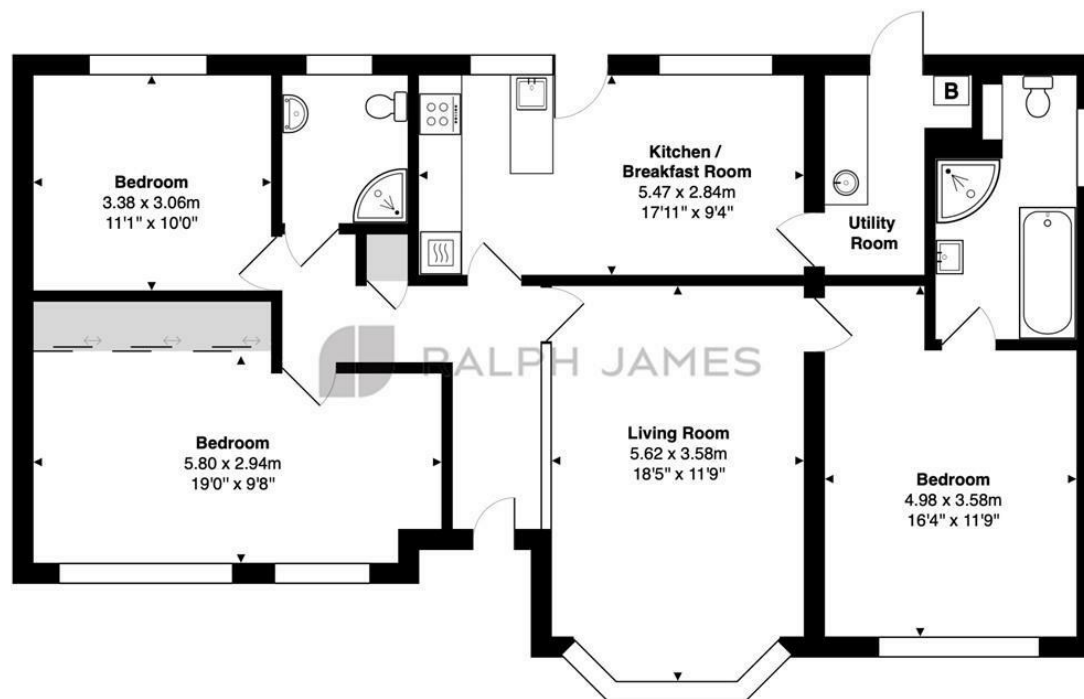
The main bedroom is a good size double room and has a luxurious en suite which has been refitted by the current owners and includes a separate bath and shower. The second bedroom is also a generous double room and has lots of built in storage. This room could potentially be split to create a separate home office if required. There is a third double bedroom and a separate family shower room.

Outside, the rear garden is a triumph. Completely private and full of beautiful mature shrubs and trees. It measures approximately 140 ft in length and there is a large patio area to the rear of the property.



## Need to know

- Detached bungalow, tucked away in a quiet cul de sac
- Three double bedrooms
- Re fitted en suite with walk in shower and separate bath, as well as family shower room
- Driveway parking for three cars
- Kitchen dining room over looking the rear garden
- Useful utility room
- Beautifully maintained and mature rear garden, measuring approximately 140 ft
- Approximately 0.7 miles from Reigate town and Priory Park
- Close to local schools including Reigate Priory and Reigate School



Hill House Drive, Reigate  
Total Area: 111.0 m<sup>2</sup> ... 1195 ft<sup>2</sup>  
FOR ILLUSTRATIVE PURPOSES ONLY.

Whilst every attempt has been made to ensure the accuracy of the floor plan shown, all measurements, positioning, fixtures, features, fittings and any other data shown are an approximate interpretation for illustrative purposes only and are not to scale.

No responsibility is taken for any error, omission, miss-statement or use of data shown.

The above statement applies to both 'Still Moving London LTD' and the Company or individual displaying this floor plan.

Unauthorised reproduction prohibited.

Â© Still Moving London LTD (www.stillmoving.london)



## Interested?

reigate@ralphjames.co.uk  
01737 333677

1

ralphjames.co.uk