



Liberty Court, Reigate
£350,000





A contemporary apartment in the heart of Reigate with secure allocated parking. Everything is right on the doorstep, with plenty of shops, bars and restaurants to choose from just a short stroll away.





Converted to apartments in 2015, this spacious two bedroom apartment is located directly opposite the renowned Priory Park. On the ground floor of this small development, the property is light and airy throughout.

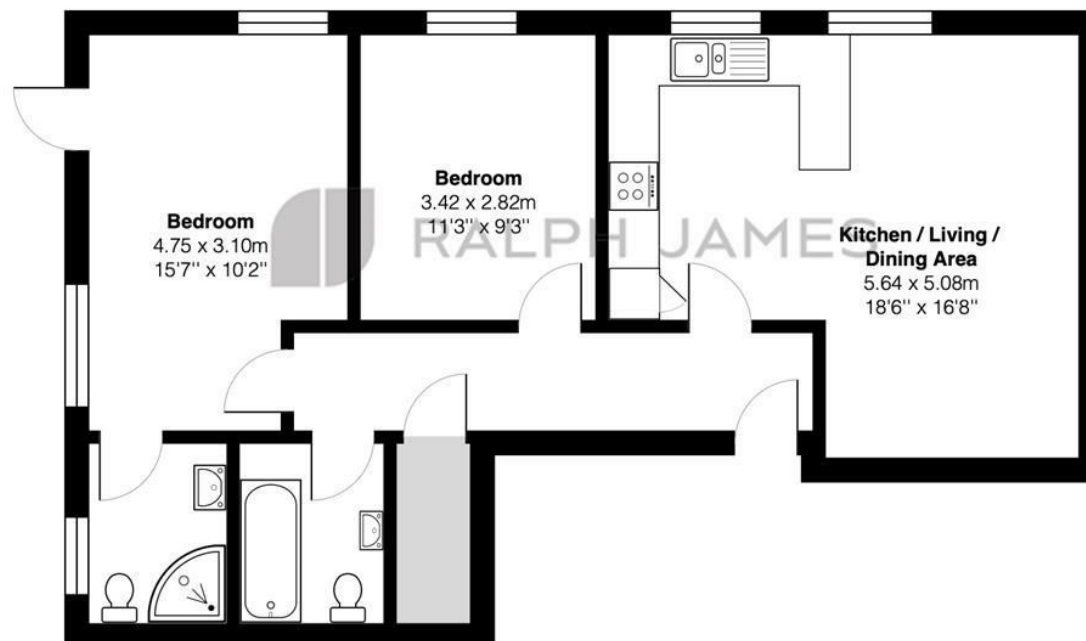
The modern kitchen area has sleek granite worktops and integrated appliances making it a neat space and there is plenty of storage too. The breakfast bar gives it a sociable feel, so if you have friends over for dinner you can chat whilst you cook. There are two double bedrooms, a bathroom with a shower over the bath and an en suite shower room to the main bedroom. There is also access to a small patio area from the main bedroom.

Outside the property has a secure allocated parking space, accessed via a remote control barrier as well as bike racks. You can stroll down the road and be in town within a matter of minutes, where you will be met by an array of shops, cafes and restaurants, not to mention the fantastic local cinema!



Need to know

- Ground floor apartment in prime central Reigate location, opposite Priory Park
- Two, good size double bedrooms
- Spacious, open plan kitchen living space with large breakfast bar
- High end finishes including granite worktops and built in appliances
- Bathroom and en suite to main bedroom
- Allocated parking space to rear of property, accessed via a remote control barrier
- Unique development, converted to apartments in 2015
- Small outside patio area to the rear from the main bedroom
- No chain



Ground Floor

Liberty Court, Bell Street, Reigate

Total Area: 65.7 m² ... 708 ft²

FOR ILLUSTRATIVE PURPOSES ONLY.

Whilst every attempt has been made to ensure the accuracy of the floor plan shown, all measurements, positioning, fixtures, features, fittings and any other data shown are an approximate interpretation for illustrative purposes only and are not to scale.

No responsibility is taken for any error, omission, miss-statement or use of data shown.

The above statement applies to both 'Still Moving London LTD' and the Company or individual displaying this floor plan.

Unauthorised reproduction prohibited.

Â© Still Moving London LTD (www.stillmoving.london)



Interested?

reigate@ralphjames.co.uk

01737 333677

1

ralphjames.co.uk