



Wray Park Road, Reigate

£550,000 - £575,000





Spacious, four bedroom conversion apartment with character features, walking distance to Reigate station





Guide Price £550,000 - £575,000

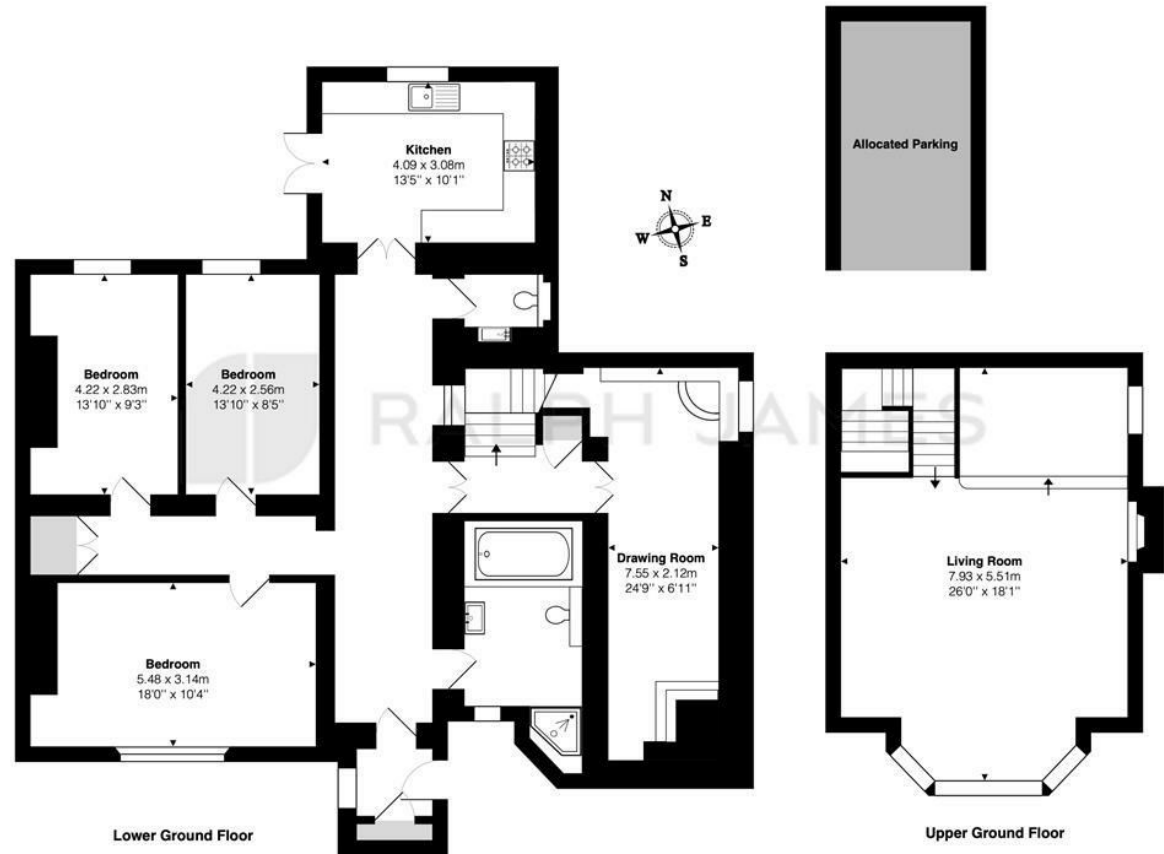
This home is a rare find – a unique combination of historical charm and modern comfort. Located in a popular residential road, just a short stroll from Reigate train station, the property effortlessly blends classic elegance with modern living. Thoughtfully renovated over time, it retains the unique character of the original period features, offering a balance of style and functionality.

Inside, you'll find a spacious entrance hall, a sleek, updated bathroom suite, and four generously sized bedrooms. The kitchen has also been updated and opens out through French doors onto a private patio – perfect for al fresco dining. The dual-aspect lounge, with its large bay window and striking period cornicing, highlights original wooden floors and an impressive fireplace, adding character and warmth.

Outside, the property is complemented by a large communal garden, featuring mature trees and a manicured lawn. Additionally, the property offers a versatile single garage, currently used as a storage space but with potential to convert into a home office.

Need to know

- Three /Four bedroom apartment within walking distance to Reigate station and a variety of local shops
- Generous accommodation offering over 1800 sq ft of space
- Large communal garden as well as private patio space
- Detached garage offering excellent storage as well as parking
- Modern kitchen and bathroom as well as separate cloakroom
- Period features including high ceilings, bay window, cornicing and fireplace
- Share of Freehold
- No forward chain



Interested?

reigate@ralphjames.co.uk
01737 333677

ralphjames.co.uk

Wray Park Road, Reigate
Total Area: 172.9 m² ... 1861 ft² (excluding allocated parking)
FOR ILLUSTRATIVE PURPOSES ONLY.

Whilst every attempt has been made to ensure the accuracy of the floor plan shown, all measurements, positioning, fixtures, features, fittings and any other data shown are an approximate interpretation for illustrative purposes only and are not to scale.

No responsibility is taken for any error, omission, mis-statement or use of data shown.

The above statement applies to both 'Still Moving London LTD' and the Company or individual displaying this floor plan.

Unauthorised reproduction prohibited.

© Still Moving London LTD (www.stillmoving.london)

 RALPH JAMES