



# Somers Gate, Reigate

Guide Price £950,000 - £1,000,000





“

The perfect blend of character and contemporary can be found in this four bedroom home. Converted in 2015 by Thakeham Homes, it is within striking distance of Reigate town centre and walking distance to Dovers Green and Reigate Schools.

”



Guide Price £950,000 - £1,000,000

This attractive semi detached home is located in a quiet residential development, just south of the town centre. The gated entrance adds a feeling of exclusivity and the lovely sprawling communal grounds are enjoyed by all where you will find children enjoying riding their bikes or kicking a ball around and sometimes having birthday parties out on the green.

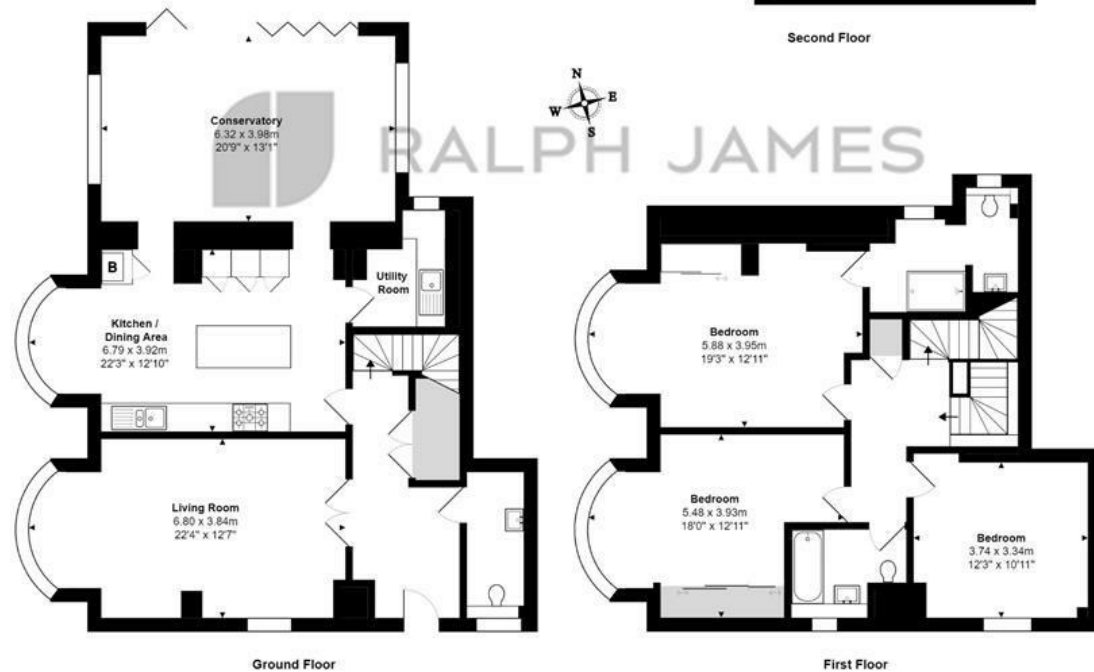
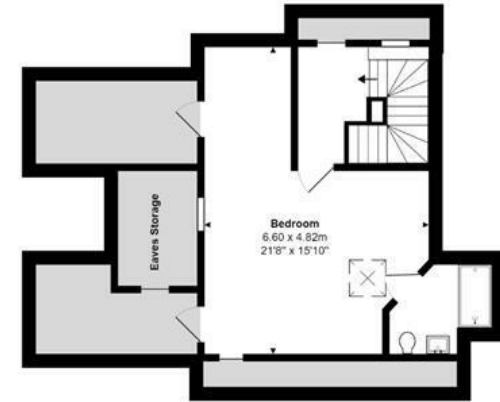
Inside the house has high ceilings and large windows. There are shutters fitted on the ground floor rooms, which really add to the style and character of the property. The living room is spacious and inviting and the open plan kitchen dining room opens onto the bright conservatory overlooking the garden. Upstairs you will find four double bedrooms laid out over two floors and three bathrooms, two of which are en suites. The rooms are spacious throughout and finished in neutral decor. Outside there is a double covered car port to the front of the house and the rear garden has a lovely large lawn and spacious patio area to enjoy al fresco dining.

This lovely home is perfectly placed for popular local schools such as The Reigate School and Dovers Green and there are local shops and amenities close by. Reigate town is 1.2 miles away with its buoyant high street bustling with shops, boutiques, fabulous eateries as well as the popular Priory Park.



# Need to know

- Guide Price £950,000 - £1,000,000
- Four bedroom semi detached home
- Tucked away in a quiet, gated development on the south side of Reigate
- Double covered car port
- Communal green and wooded area
- Living room with bay window and shutters
- Kitchen/dining room opening onto conservatory
- Four double bedrooms, two with en suite bathrooms and separate family bathroom
- Good size rear garden with patio area and lawn
- Communal service charge £1550 per annum



## Interested?

reigate@ralphjames.co.uk  
01737 333677

ralphjames.co.uk

Somers Gate, Dovers Green Road, Reigate

Total Area: 231.1 m<sup>2</sup> ... 2488 ft<sup>2</sup>

FOR ILLUSTRATIVE PURPOSES ONLY.

Whilst every attempt has been made to ensure the accuracy of the floor plan shown, all measurements, positioning, fixtures, features, fittings and any other data shown are an approximate interpretation for illustrative purposes only and are not to scale.

No responsibility is taken for any error, omission, mis-statement or use of data shown.

The above statement applies to both 'Still Moving London LTD' and the Company or individual displaying this floor plan.

Unauthorised reproduction prohibited.

© Still Moving London LTD (www.stillmoving.london)