



Croydon Road, Reigate

£1,700 Per Month





This property benefits from an allocated parking space on the spacious entrance driveway. There is also a lockable storage area suitable for bike store so you can explore the area on two wheels if you like.

Reigate town and Priory Park are the perfect place to go for a walk, with independent shops, lake and tennis courts. There's a Everyman cinema for all the latest films and fantastic restaurants.





Ralph James are proud to present this immaculately presented two-bedroom, two bathroom, top-floor apartment in a great location close to the vibrant shops, cafes and restaurants of Reigate. Great commuter links and easy access to either Redhill or Reigate stations.

An impressive communal entrance leads to the lift or stairs access to this lovely apartment. The size of the apartment is impressive - a contemporary, quiet environment, perfect for professionals.

If you fancy yourself as a bit of a budding chef then the well-designed kitchen will not disappoint. It has all the built-in appliances you would expect from a modern development and is open plan to the attractive sitting and dining areas, zoned with oak flooring to separate the kitchen area.

This bright open plan room overlooks the beautiful communal garden. It has plenty of space to entertain visiting friends and family, with good space for a dining table and eaves storage space.

The Master bedroom overlooks the front of the property and benefits from fitted wardrobes along one wall and drawer storage under the window. It also has an attractive en-suite shower room.

The second bedroom is to the back of the apartment and has eaves storage.

There's a contemporary family bathroom too - well designed with tiled flooring and heated towel rails.

This property benefits from an allocated parking space on the spacious entrance driveway. There is also a lockable storage area suitable for bike store so you can explore the area on two wheels if you like.

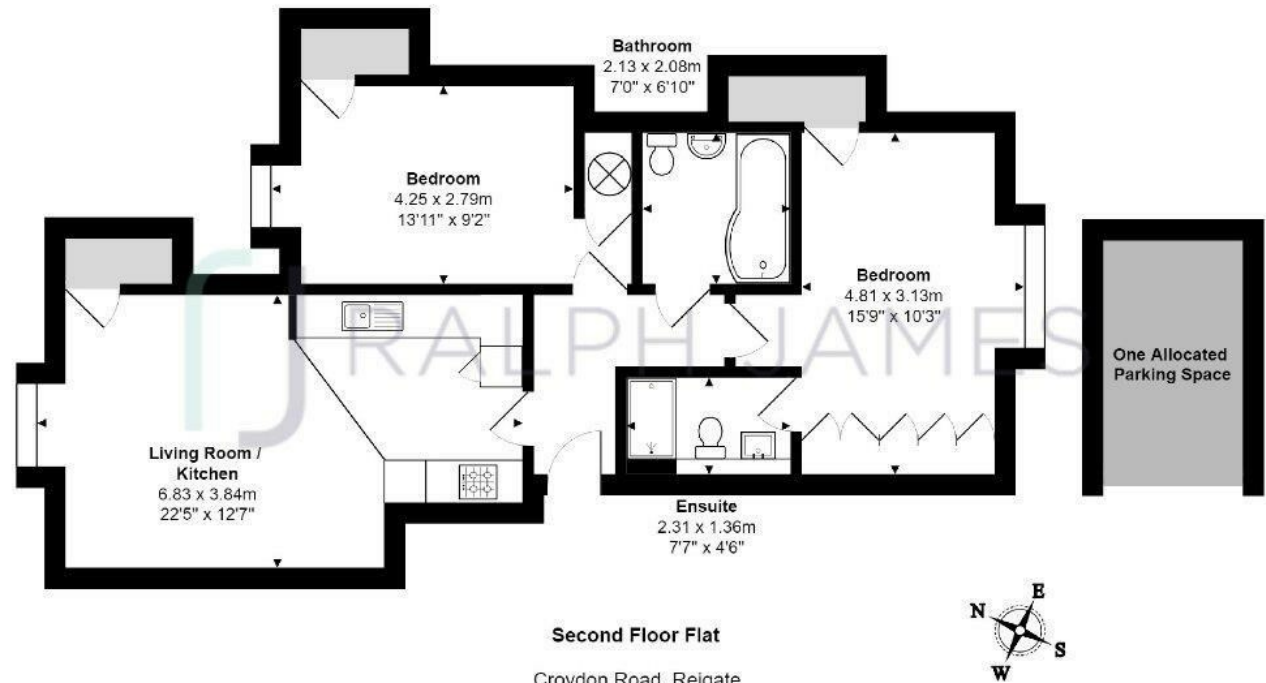
Reigate town and Priory Park are the perfect place to go for a walk, with independent shops, lake and tennis courts. There's a Everyman cinema for all the latest films and fantastic restaurants.

Unfortunately pets are not allowed in this building.



Need to know

- Top Floor
- Allocated Parking
- Open Plan
- Close to Reigate
- Spacious Flat
- Two bedrooms
- Modern Build
- Flex on Furnishings
- EPC: C
- Council: D



Second Floor Flat

Croydon Road, Reigate

Total Area: 70.1 m² ... 754 ft² (excluding parking space)

Floor Plan measurements are approximate and are for illustrative purposes only.

While we do not doubt the floor plans accuracy, we make no guarantee, warranty or representation as to the accuracy and completeness of the floor plan.
www.stillmoving.london © 2018

 RALPH JAMES

Interested?

reigate@ralphjames.co.uk

01737 333677

1

ralphjames.co.uk