



Yorke Road, Reigate

Guide Price £325,000-£340,000





A spacious and modern apartment with a balcony on the edge of Reigate town centre, close to Reigate train station and with beautiful views of Reigate Hill.





Guide Price: £325,000-£340,000

Swan House, a development built 10 years ago, comprises an exclusive collection of twelve apartments ideally located a short walk from Reigate town centre and the train station.

This third-floor apartment features a roomy open-plan living area perfect for entertaining, with direct access to a private balcony boasting superb elevated views of Reigate Hill. The property is in pristine condition, featuring a stylish, high-spec kitchen, a spacious bathroom with a bath and separate shower, a large bedroom, and underfloor heating throughout.

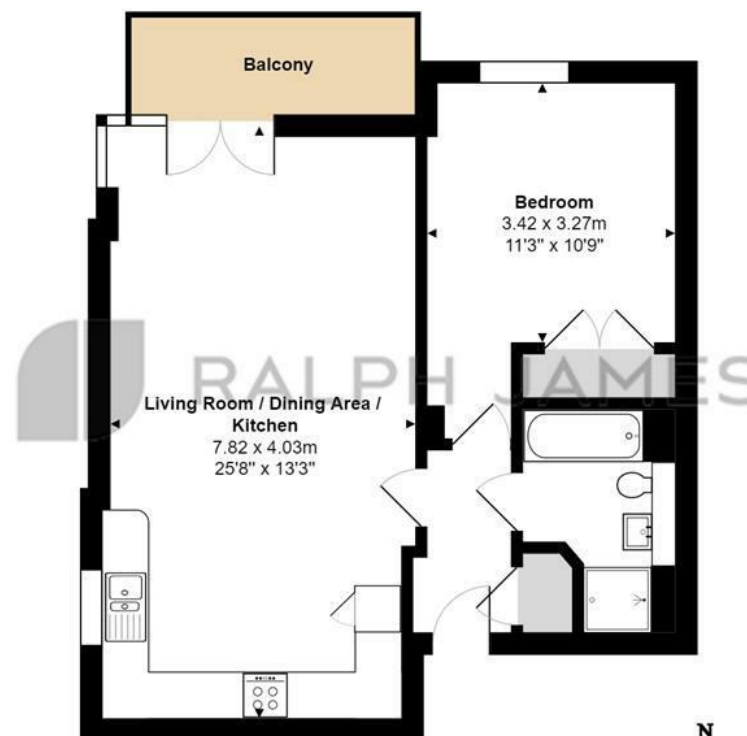
This modern development includes a lift and an allocated parking space in the secure underground car park. The apartment is an excellent choice for first-time buyers, downsizers, or investment buyers due to its prime location.

Whilst this property is currently leasehold, many other owners have purchased their share of the freehold, so the option also presents itself here.



Need to know

- Spacious apartment with balcony & stunning views of Reigate Hill
- Excellent location, a short walk to Reigate train station, local shops & Reigate town centre
- Attractive modern building, built in 2014
- High quality kitchen with built-in appliances & luxury bathroom with separate shower
- Large open plan living area with access to balcony
- Secure undercroft parking and communal grounds
- Ideal first-time buy or investment purchase
- Underfloor heating throughout
- 115 years remaining on the lease



Third Floor Flat

Swan House, Yorke Road, Reigate

Total Area: 55.9 m² ... 602 ft² (excluding balcony)

FOR ILLUSTRATIVE PURPOSES ONLY.

Whilst every attempt has been made to ensure the accuracy of the floor plan shown, all measurements, positioning, fixtures, features, fittings and any other data shown are an approximate interpretation for illustrative purposes only and are not to scale.

No responsibility is taken for any error, omission, miss-statement or use of data shown.

The above statement applies to both 'Still Moving London LTD' and the Company or individual displaying this floor plan.

Unauthorised reproduction prohibited.

© Still Moving London LTD (www.stillmoving.london)

Interested?

reigate@ralphjames.co.uk
01737 333677

ralphjames.co.uk

