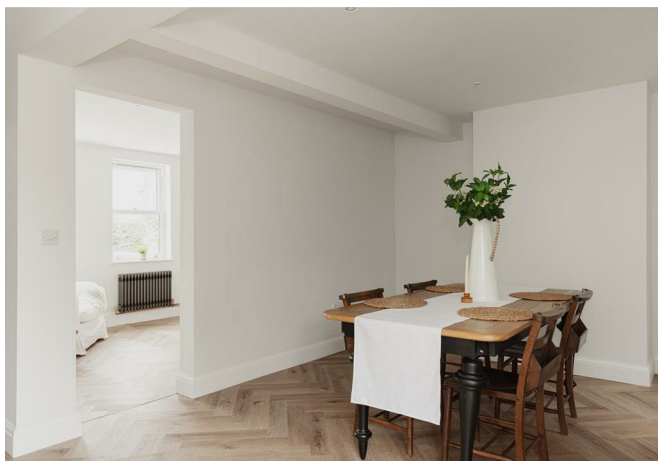




# North Road, Reigate

Guide Price £600,000 - £650,000





The perfect blend of character with a contemporary style, make this the ideal home for a hassle free move, safe in the knowledge it has been refurbished from top to toe. Located on the South side of Reigate, it is close to Priory Park and several local schools, including Sandcross Primary & Reigate School.





Guide Price £600,000 - £650,000

This fabulous Victorian property has been extended and fully renovated to a high standard to provide a modern family home. Found in the popular South Park area of Reigate, the town centre is under a mile away and Priory Park is close by for lovely walks and activities.

The welcoming hallway, with plenty of space for coats and shoes, leads to the stunning, modern dining/family room with doors opening onto the garden. This leads through to a fully fitted kitchen with brand new integrated Bosch appliances and light flooding in through the roof lantern above. A useful shower/utility room is just off the kitchen which is perfect for keeping the washing hidden away!

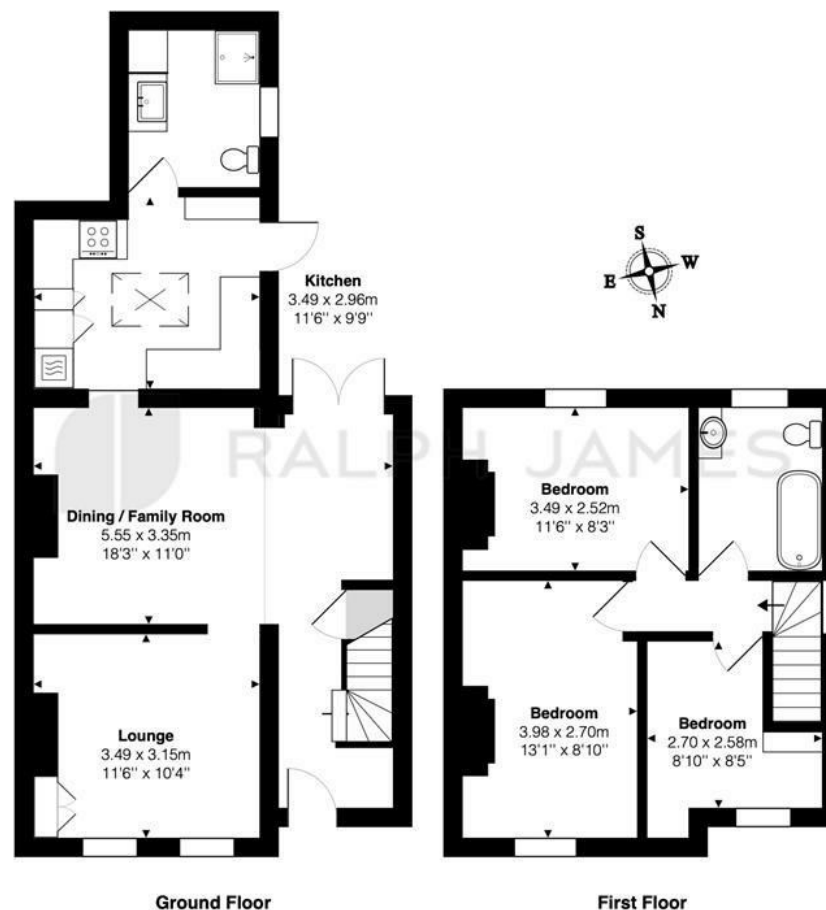
The cosy lounge is a separate reception room to the front of the property offering peace and quiet away from the hustle and bustle! On the first floor are three well proportioned bedrooms along with the new family bathroom which has a claw foot bath with shower over and attractive metro tiling.

Externally, there is rare and sought-after parking to the front of the property for two cars, and to the rear a charming south-facing "English" garden with a good sized shed.



## Need to know

- Period semi detached home which has been extended and fully renovated
- Fabulous spacious accommodation which is perfect for modern family life
- Attractive fully-fitted kitchen with ceramic butler sink, roof lantern and door out to the garden
- Downstairs shower/ utility room with WC and sink and space for washing machine and tumble dryer
- Gravelled driveway with off street parking for two cars
- Pretty 80ft south-facing rear garden with plenty of mature shrubs and plants, lawn area and shed
- Close to many popular schools including Sandcross Primary and Reigate Secondary School
- An abundance of features including herringbone flooring and antique style radiators,
- The property has been totally rewired, re-plumbed and has a brand new boiler and windows throughout
- No onward chain



North Road, Reigate

Total Area: 88.0 m<sup>2</sup> ... 948 ft<sup>2</sup>

FOR ILLUSTRATIVE PURPOSES ONLY.

Whilst every attempt has been made to ensure the accuracy of the floor plan shown, all measurements, positioning, fixtures, features, fittings and any other data shown are an approximate interpretation for illustrative purposes only and are not to scale.

No responsibility is taken for any error, omission, miss-statement or use of data shown.

The above statement applies to both 'Still Moving London LTD' and the Company or individual displaying this floor plan.

Unauthorised reproduction prohibited.

© Still Moving London LTD (www.stillmoving.london)

## Interested?

reigate@ralphjames.co.uk  
01737 333677

ralphjames.co.uk