



Westfield, Reigate

£1,350,000





“

This gorgeous detached family home is tucked away in a quiet cul de sac, yet close enough to walk to the station, town and a selection of local schools. The epitome of modern living with large, inviting rooms for the whole family to spend time together in.

”

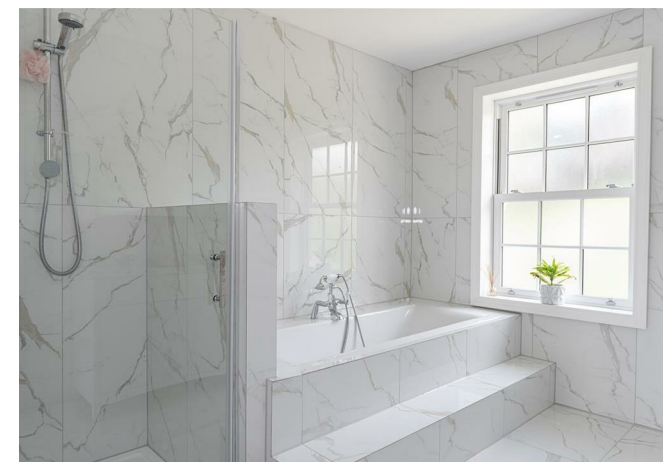


This stunning detached home is located in a quiet cul de sac in North Reigate. Having been reconfigured and beautifully refurbished by the current owners, it is ready for the next family to move into and enjoy. Bright and spacious throughout, with large Georgian style full height windows, the light really floods in.

The property has a welcoming feel and the engineered wood chevron flooring throughout the ground floor is stylish and contemporary. The large open plan kitchen, dining room is an inviting space and a real hub of the home. There is a large island in the kitchen, making it a great sociable, entertaining space. The living room has a double aspect with doors opening onto the garden and there is also a separate family room which could be used as a snug or home office.

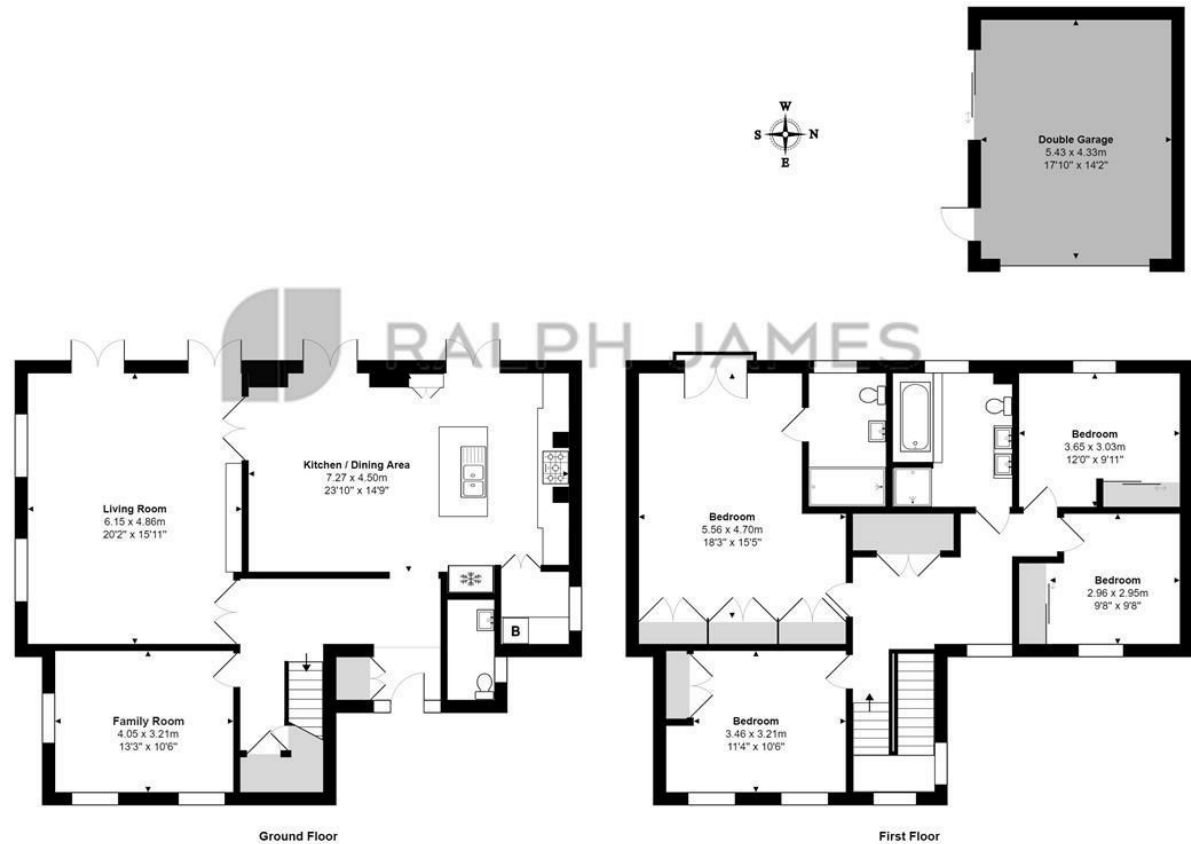
Upstairs, the main bedroom looks out to the rear over the garden with a Juliet balcony. It has ample built in wardrobes and a luxurious en suite shower room. There are three further double bedrooms, all with built in wardrobes and a large family bathroom with separate bath and shower.

Outside, the West facing garden is very private and wraps around the property. There is a large garage, which provides excellent storage and could be converted to a garden room, gym or home office and a driveway.



Need to know

- Four double bedroom, detached family home
- Located in a peaceful cul de sac, close to a selection of excellent schools including Wray Common Primary, Holmesdale Community Infants and St Bedes
- Short walk to Reigate train station, approximately 10 minutes
- Beautifully refurbished throughout to a contemporary style
- West facing rear garden
- Driveway and detached garage
- Large, bright living room with doors leading to garden as well as a separate family room
- Sociable kitchen, dining room with hidden utility room
- Family bathroom, en suite shower room and downstairs cloakroom
- Underfloor heating throughout the ground floor



Ground Floor

First Floor

Westfield, Reigate
Total Area: 197.0 m² ... 2120 ft² (excluding double garage)
FOR ILLUSTRATIVE PURPOSES ONLY.

Whilst every attempt has been made to ensure the accuracy of the floor plan shown, all measurements, positioning, fixtures, features, fittings and any other data shown are an approximate interpretation for illustrative purposes only and are not to scale.

No responsibility is taken for any error, omission, mis-statement or use of data shown.

The above statement applies to both 'Still Moving London LTD' and the Company or individual displaying this floor plan.

Unauthorised reproduction prohibited.

© Still Moving London LTD (www.stillmoving.london)



Interested?

reigate@ralphjames.co.uk
01737 333677

ralphjames.co.uk