



# Mark Street, Reigate

GUIDE PRICE £525,000-£550,000





This charming cottage is tucked away on a quiet residential street off Holmesdale Road and Warren Road, ideally situated within walking distance of Reigate station & high street. Featuring two double bedrooms, a spacious reception room, and a delightful courtyard garden to enjoy year-round, it's the perfect home for couples, friends sharing, or professionals.





Guide Price £525,000 - £550,000

This charming cottage is tucked away in a quiet residential street off Holmesdale Road and Warren Road, ideally situated within walking distance of Reigate High Street and the station.

For daily commuters, the quick walk to Reigate station alleviates the stress of finding parking. Holmesdale Road offers several convenience stores, including a Co-Op, and we highly recommend Sunday brunch at Beryl and Peg or a drink at the Prince of Wales before heading into town. Reigate boasts a wide variety of shops, restaurants, and pubs, as well as the beautiful Priory Park, which hosts events year-round and features a lovely children's play area and lake.

The property exudes a welcoming, rustic charm. Upon entering, you are greeted by a hallway with wooden flooring that extends into the lounge/dining room to the right. The dining area accommodates a good-sized table, and the cozy lounge is perfect for relaxation, featuring an original working fireplace for those cold winter months.

The extended kitchen offers ample quartz countertop space and plenty of storage units. At the rear of the house, the recently and beautifully refitted family bathroom includes a bath and a walk-in shower.

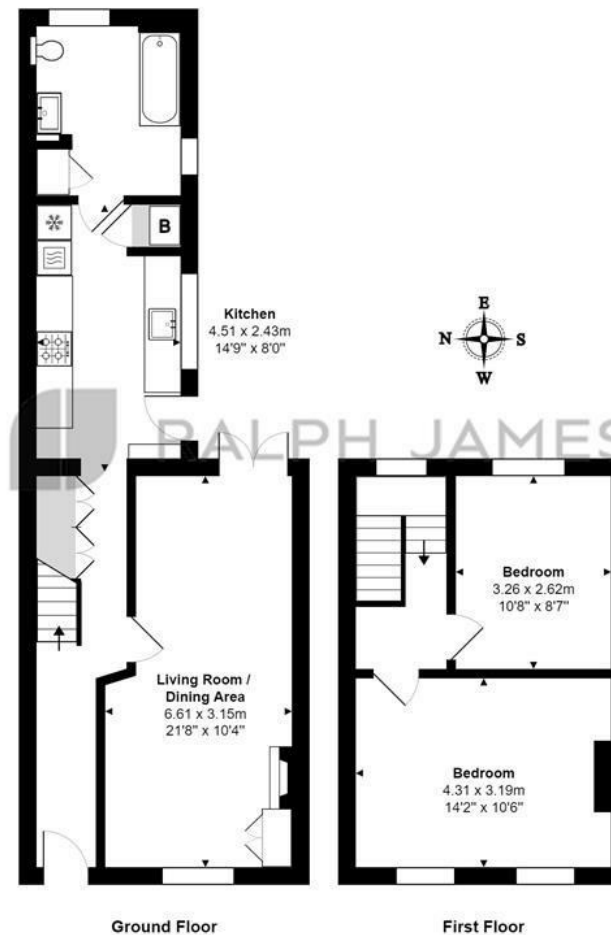
The courtyard garden is ideal for entertaining guests, whether you're hosting a BBQ or dining al fresco, and requires very little maintenance.

Upstairs, there are two double bedrooms: one overlooks the garden, and the master bedroom offers a view of Mark Street.



# Need to know

- Period cottage in quiet street
- Two double bedrooms
- Bright kitchen with quartz worktops
- Beautifully refitted bathroom
- Large open plan living/dining room
- Period features throughout
- Close to Reigate town centre
- Walking distance to Reigate train station
- Close to schools
- No onward chain



Mark Street, Reigate  
Total Area: 75.5 m<sup>2</sup> ... 812 ft<sup>2</sup>  
FOR ILLUSTRATIVE PURPOSES ONLY.

Whilst every attempt has been made to ensure the accuracy of the floor plan shown, all measurements, positioning, fixtures, features, fittings and any other data shown are an approximate interpretation for illustrative purposes only and are not to scale.

No responsibility is taken for any error, omission, miss-statement or use of data shown.

The above statement applies to both 'Still Moving London LTD' and the Company or individual displaying this floor plan.

Unauthorised reproduction prohibited.

Â© Still Moving London LTD (www.stillmoving.london)



## Interested?

reigate@ralphjames.co.uk  
01737 333677

ralphjames.co.uk