



West Street, Reigate

£1,445 Per Month





“

Ralph James presents Westcroft: high-end one to three-bedroom rentals near Reigate Town Centre. Each residence features unique layouts, top-tier kitchens, video door entry, and secure underground parking. Some units offer private balconies. The development blends individuality with community, located conveniently for local amenities, redefining modern living in Reigate.

”



Introducing an exciting addition to the Reigate Lettings market, Ralph James proudly presents the latest development—Westcroft. This exclusive development showcases high-end one, two, and three-bedroom rental apartments, strategically positioned in close proximity to Reigate Town Centre.

What sets Westcroft apart is the distinctiveness of each flat's layout. In this development, uniformity gives way to individuality, ensuring a unique living experience for each resident. Amidst the contemporary design and shared amenities, you're guaranteed a home that stands apart from the rest.

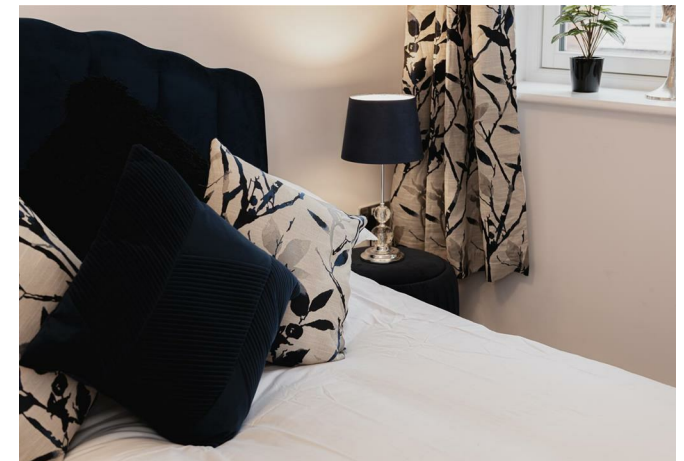
Every residence at Westcroft boasts a meticulously designed kitchen, complete with stone countertops and integrated appliances, including a dishwasher. The emphasis on security is evident with video door entry systems, providing peace of mind to residents. The convenience of secure allocated underground parking spaces with EV charging available on request further enhances the overall living experience.

The thoughtful design of Westcroft extends beyond the interior. Some residences feature their own balcony, providing a private outdoor retreat—a rare commodity in rental developments. This additional space adds a layer of exclusivity, allowing residents to enjoy moments of tranquility or entertain guests.

Westcroft embodies a commitment to delivering not just homes, but distinctive living experiences. The development prioritises both individuality and community, ensuring that residents enjoy the perks of shared living space while relishing the unique qualities of their own abode.

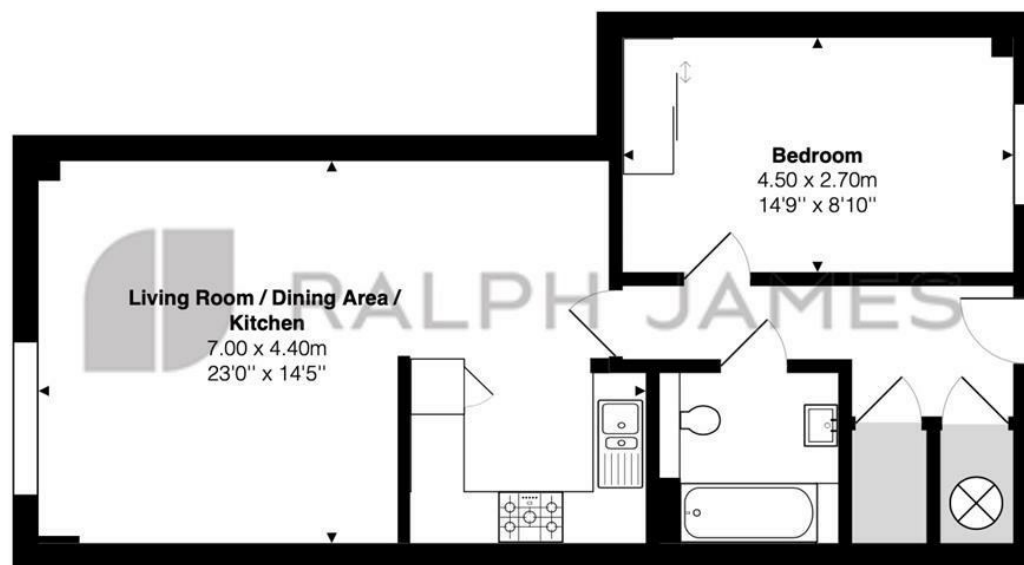
A prime location complements the allure of Westcroft. Situated near Reigate Town Centre, residents benefit from the convenience of proximity to local amenities, shopping, and leisure facilities. The vibrant atmosphere of the town is within reach, offering a diverse range of experiences just moments away.

PHOTOS ARE OF THE SHOW HOME



Need to know

- Brand new development
- Fully equipped kitchen, Including dishwasher
- Video entry phone system
- Your own front door
- Designated underground car parking space with EV capability upon request
- Cracking location
- Stones throw to the Reigate station
- Unfurnished
- EPC: B
- Council: TBC



Ground Floor

West Street, Reigate

Total Area: 53.7 m² ... 578 ft²

FOR ILLUSTRATIVE PURPOSES ONLY.

Whilst every attempt has been made to ensure the accuracy of the floor plan shown, all measurements, positioning, fixtures, features, fittings and any other data shown are an approximate interpretation for illustrative purposes only and are not to scale.

No responsibility is taken for any error, omission, miss-statement or use of data shown.

The above statement applies to both 'Still Moving London LTD' and the Company or individual displaying this floor plan.

Unauthorised reproduction prohibited.

Â© Still Moving London LTD (www.stillmoving.london)



Interested?

reigate@ralphjames.co.uk
01737 333677

1

ralphjames.co.uk